

# Internationalization of Higher Education in Japan



# Overview of Government Policy and Initiatives in Japan

## 1. Plan for acceptance of international students

(1983) “100,000 International Students Plan”

(2008) “300,000 International Students Plan”

## 2. Promotion of internationalization of universities

(2009~2013) “Global 30” project

(2014~) “Top Global University Project”

## 3. Promotion of regional student mobility as government initiatives

(2011~) “Inter-University Exchange Project”

## 4. Growing needs for global human resources

(2012~) “Go Global Japan (GGJ)” project

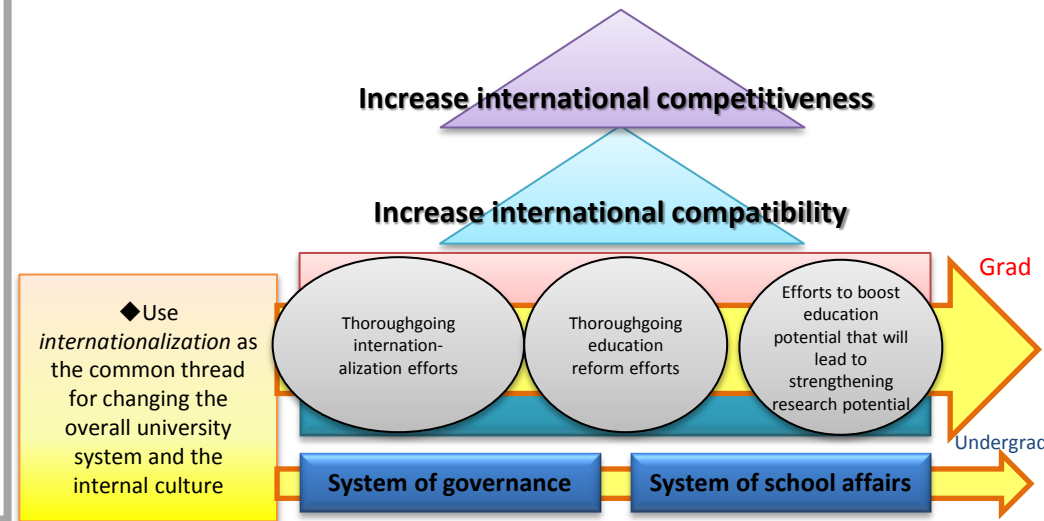
Through carrying out comprehensive university reform and internationalization, this project aims to enhance the international compatibility and competitiveness of higher education in Japan, creating an environmental infrastructure to foster capable and talented graduates.

## 【Project overview】

Prioritize support for universities that are thoroughgoing in their efforts to internationalize -- including new efforts to build and accelerate partnerships and exchange programs with world-leading universities; reform personnel and administrative systems; and strengthen systems to cultivate the ability of students to deal with globalization.

•**Top Type:** 13 universities  
Universities aiming to rank in the top 100 in the world

•**Global Traction Type:** 24 universities  
Universities that attempt to make pioneering trial runs based on their performance thus far and that will lead the push of Japanese society toward globalization



## ◆ Goals set by the 37 universities selected for Top Global University Project

### 1. Internationalization

- ① Percentage of international full-time faculty staff and full-time faculty staff who have received their degrees at a foreign university
- ② Percentage of international students
- ③ Percentage of Japanese students who have experienced study abroad (credit earning)
- ④ Percentage of Japanese students studying abroad under inter-university agreements
- ⑤ Percentage of classes conducted in foreign languages
- ⑥ Percentage of students enrolled in degree programs in foreign languages
- ⑦ Percentage of students who meet foreign language standards
- ⑧ Percentage of syllabus translated in English
- ⑨ Percentage of Japanese students who stay in international dormitories
- ⑩ Flexible academic calendar

### 2. Governance

- ① Percentage of annual salary system
- ② Percentage of tenure track system
- ③ Upgrading of administrative staff (percentage of administrative staff who meet foreign language standards)

### 3. Educational Reform

- ① Percentage of course numbering
- ② Percentage of use of external test such as TOEFL in entrance examination
- ③ Percentage of classes where evaluation by students is conducted

# 37 universities selected for “Top Global University Project”

## Legend

framed: Top Type   none: Global Traction Type  
 Black: National   Blue: Public   Red: Private

### Kinki Area

- Kyoto U
- Osaka U
- Kyoto Institute of Technology
- Nara Institute of Science and Technology
- Ritsumeikan U
- Kwansei Gakuin U

### Tohoku Area

- Tohoku U
- Akita International U
- U of Aizu

### Hokkaido Area

- Hokkaido U

### Kanto Area

- U of Tsukuba
- U of Tokyo
- Tokyo Medical and Dental U
- Tokyo Institute of Technology
- Keio U
- Waseda U
- Chiba U
- Tokyo U of Foreign Studies
- Tokyo U of the Art
- International Christian U
- Shibaura Institute of Technology
- Sophia U
- Toyo U
- Hosei U
- Meiji U
- Rikkyo U
- Soka U

### Kyushu, Okinawa Area

- Kyushu U
- Kumamoto U
- Ritsumeikan Asia Pacific U

### Chugoku, Shikoku Area

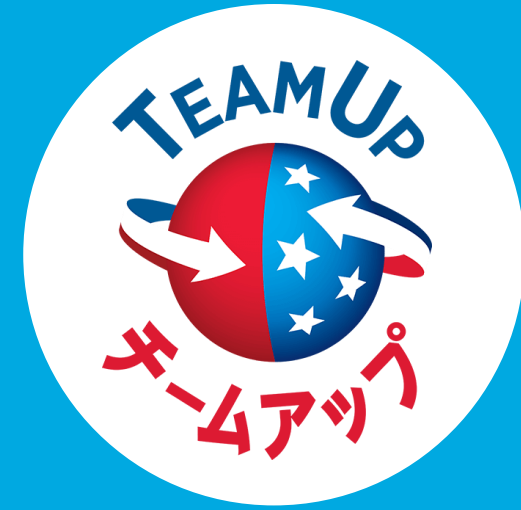
- Hiroshima U
- Okayama U

### Hokuriku, Koshinetsu, Tokai Area

- Nagoya U
- Kanazawa U
- Nagaoka U of Technology
- Toyohashi U of Technology
- International U of Japan

- Top Type : 13 universities
- Global Traction Type : 24 universities

# TeamUp Campaign



February 21, 2017

Pamela Fields



日米文化交流会議

CULCON

United States ~ Japan Conference  
on Cultural & Educational Interchange  
*Ideas & Opportunities for Public/Private Partnerships*



- ❑ Binational public/private advisory panel to the U.S. and Japanese governments
- ❑ Established in 1961 by President Kennedy and Prime Minister Ikeda
- ❑ Serves to focus official and public attention in both countries on the vital cultural and educational underpinnings of the U.S.-Japan relationship
- ❑ Working group/task force structure addresses challenges and seeks solutions
- ❑ Education Task Force examined U.S.-Japan student mobility; issued report to both governments with 37 recommendations.



# TeamUp: Forging New And Innovative Agreements



APPROXIMATELY

20%

of all colleges and universities in Japan and the U.S. have already been involved in a TeamUp activity

TeamUp is a powerful campaign to create and expand vibrant, innovative agreements between U.S. and Japanese universities to increase student mobility and enhance learning.

TeamUp helps schools expand current partnerships and form new ones that:

- Reach students who wouldn't typically study abroad
- Increase diversity by adding more international students
- Enhance student learning through new methods
- Integrate experiential learning abroad with on-campus curriculum
- Expand faculty's capacity to teach and research abroad



# TeamUp Creates And Expands Vibrant Agreements



## TEAMUP'S MISSION

Cultivate new, innovative  
U.S.-Japan educational  
partnerships

Help reach the goal of  
doubling U.S.-Japan  
student mobility by 2020

Create a diverse next generation  
of stewards of the  
U.S.-Japan relationship

Build a globally talented workforce

## TeamUp Awareness Drive

Convening influential stakeholders, speaking at key conferences, and hosting networking opportunities to lay the groundwork to create and expand educational partnerships.

## TeamUp RoadMap

A comprehensive online resource, written by experts in the field, to lead U.S. and Japanese institutions through the process of creating and expanding partnerships.

## TeamedUp Familiarization Tour

An opportunity for U.S. institutions, for whom contacts and resources are a challenge, to travel to Japan to meet potential Japanese partners; led and funded by TeamUp.

## TeamUp Micro-Grants

An opportunity for U.S. institutions to design an individualized program to travel to Japan to meet potential Japanese partners; funded by TeamUp.



# TeamUp Roadmap: A Comprehensive Online Resource



**The interactive TeamUp RoadMap, written by experts in the field, leads U.S. and Japanese institutions through the process of creating and expanding partnerships.**

The RoadMap was created by a bilingual, binational team of experts in binational partnerships:

- DR. SUSAN BUCK SUTTON, Senior Advisor for International Initiatives at the President's Office at Bryn Mawr College (retired), is a renowned expert on the changing nature of internationalization and institutional partnerships.
- DR. SHINGO ASHIZAWA, Professor for Regional Development Studies at Toyo University in Tokyo.
- MS. CLARE BANKS, Assistant Director for International Partnerships and IIE Initiatives, Institute of International Education.
- DR. HIROSHI OTA, Professor, Center for Global Education and Director, Global Education Program at Hitotsubashi University.

## Why Partnerships?

Presents the rationale for strategic partnerships between U.S. and Japanese institutions that is needed for support.

## Partnership Basics

Guides leaders in creating effective and appropriate new partnerships—critical for those new to U.S.—Japan collaborations.

## Challenges

Identifies the specific challenges that can make U.S.—Japanese partnerships difficult and describes practical solutions.

## Innovations

Discusses the wide range of exciting, new approaches that are enhancing academic partnerships, including case studies.

## Resources

Contains links to helpful websites, a bibliography of useful publications, and a list of those engaged in partnerships.

## Engage and Share

Invites you to interact with others by sharing ideas, plans, and experiences. Seeking a potential partner? Tell us here.

stronger U.S.-Japan relationship

informed and strategic workforce

global skills acquisition

greater student mobility

educational partnerships

# Connecting the Dots

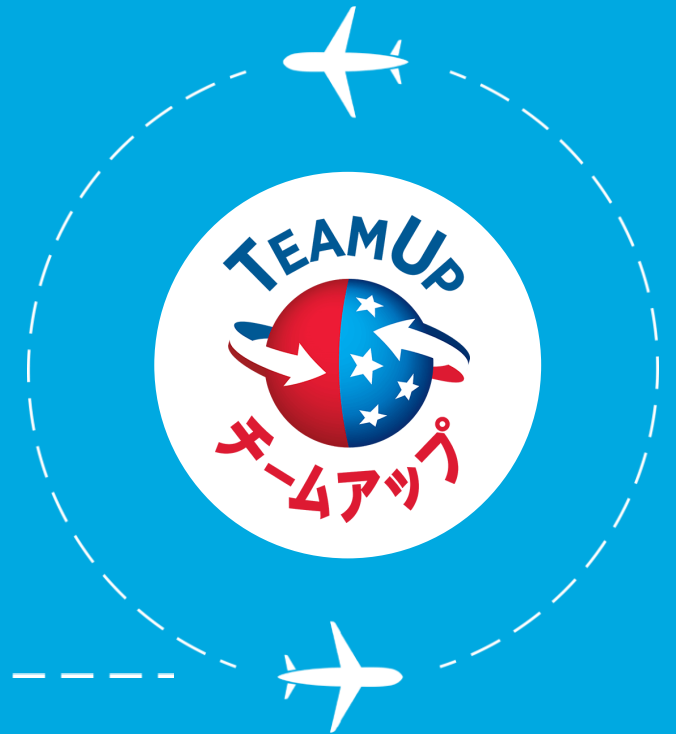




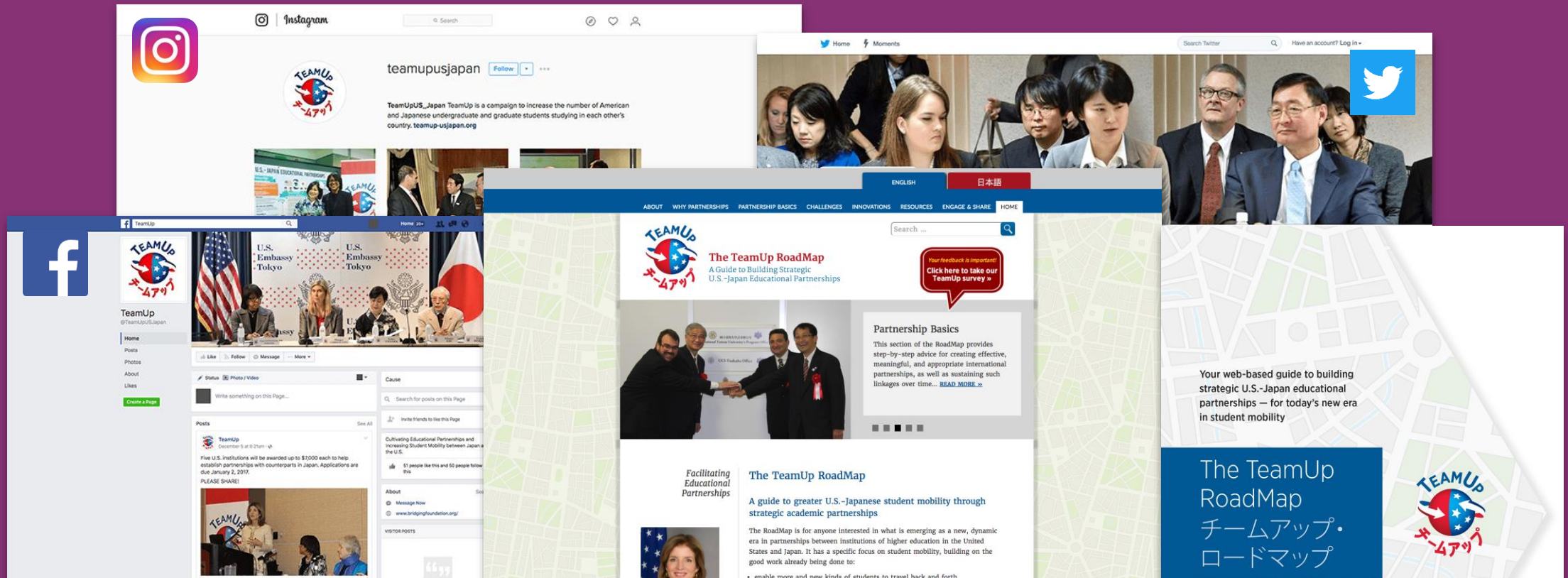
“For me, study abroad is about more than taking classes in another country. It is about experiencing a new culture, creating lasting friendships, getting out of your comfort zone and developing as a global citizen and as a member of the global workforce.”

*- D’Juan Mercado*

Student, George Mason University  
Studied at Akita International University  
and Sophia University



PAMELA FIELDS  
Project Director • TeamUp Campaign  
pfields@jusfc.gov • 202.653.9800



# The TeamUp Brand Paves The Way

“TeamUp gave me the brand status I needed to approach Japanese universities.”

- Dr. Debra Nakama, University of Hawai'i Maui College



# TeamUp Jumpstarts New Partnerships

For each MOU already signed, there are  
multiple MOUs in progress!

MOUs Signed  
by TeamUp  
Participants:

Spelman College + Fukuoka Women's University

University of Massachusetts Boston + Chukyo University

University of Massachusetts Boston + Hokkaido University

University of Massachusetts Boston + Ryukoku University

University of Massachusetts Boston + Sophia University

University of Massachusetts Boston + Soka University

University of Massachusetts Boston + Saitama University

University of Hawai'i Maui + University of the Ryukyus

Chatham University + Toyo University

University of Oregon + Hitotsubashi University

# People-To-People Connections Make All The Difference

## The Situation

University of Hawai'i Maui College sought to rekindle their international student program after numbers began to decline.



**Community College:**  
**University of Hawai'i Maui  
College**  
4,400 day and night students



**Dr. Debra Nakama**

*Vice Chancellor for Student Affairs*

Unique focus in cybersecurity, STEM,  
and increasing college matriculation  
rates in underserved populations.



**Dr. Lui Hokoana**

*Chancellor and CEO*

Secured funding that led to significant  
growth in enrollment, access to financial  
aid, and service to underrepresented  
groups.



# People-To-People Connections Make All The Difference



## TeamUp's Actions

TeamUp selected Dr. Nakama to participate in the TeamedUp Familiarization Tour. Dr. Hokoana asked to accompany the tour – and paid his own way.

In Tokyo, Fukuoka and Okinawa, TeamUp introduced the participants to administrators, faculty and students at 12 potential partner colleges and universities, as well as Ambassador Kennedy and her staff at the U.S. Embassy Tokyo and the Consul General in Okinawa.

TeamUp also suggested Dr. Nakama look through the RoadMap for a partner – preferably one that was located in a sister city.



## The Outcome

The TeamedUp Familiarization tour enabled faster, deeper connections on both sides. Typically, partnerships require many meetings, trips and sometimes years to establish. Within two months, Maui College signed an MOU with the University of the Ryukyus. Additional MOUs in the pipeline include Fukuyama City University, Okinawa International University, Fukuyama Municipal High School and Yamaguchi Prefectural University.

“Perhaps the most inspiring example of the program’s impact can be found in the deepening relationship between University of Hawai’i Maui College and the University of the Ryukyus. Dr. Nakama has already returned to Okinawa for a formal signing ceremony with Dr. Kaori Kinjo at the University of the Ryukyus.”

- Ms. Angela Shaeffer, Senior Director, Cultural Vistas

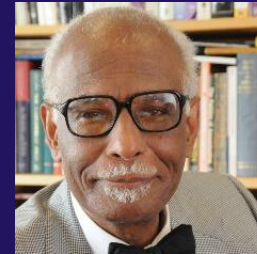
# Key Introductions Lead To Stronger Ties

## The Situation

Many of University of Massachusetts Boston's students are urban, first-generation college students who have typically been under-served. University of Massachusetts Boston had no Japanese partners, but were passionate about expanding international ties and globalizing the campus.



**State School:**  
**University of Massachusetts  
Boston**  
**More than 17,000 students**



**Dr. Winston E. Langley**  
*Provost and Vice Chancellor for Academic Affairs*

Scholarly interests include human rights, alternative models of world order, religion, and politics.



**Dr. J. Keith Motley**  
*Chancellor*

Named as one of the *Boston Business Journal's* "Power 50" list of Boston-area influencers for each of the past five years.





# Key Introductions Lead To Stronger Ties



## TeamUp's Actions

We invited University of Massachusetts Boston to participate in our kickoff event of 31 U.S. and Japanese college and university presidents and senior administrators and reception at Ambassador Kennedy's residence in Tokyo.

There, Provost Langley connected with President Takashi Hayashita of Sophia University. The correspondence between the schools continued, and we invited both to the TeamUp breakfast at NAFSA, two months later.

## The Outcome

Provost Langley and President Hayashita finalized their first agreement at the TeamUp breakfast and signed an MOU shortly thereafter—the first MOU for the University of Massachusetts Boston with a Japanese university.

Now, University of Massachusetts Boston has six partnerships with Japanese universities. Provost Langley attributes each of these to his involvement with TeamUp.



# TeamUp Micro-Grant Program

Up to \$7,000 awarded to a U.S. institution to travel to Japan to meet potential partners from November, 2016 - August, 2017.



## Recipients

- Monroe Community College
- University of New Hampshire
- Spelman College
- Texas Tech University
- Mid Michigan Community College
- Illinois Institute of Technology
- Clafin University
- University of Rhode Island
- Community College of Philadelphia
- University of Texas San Antonio

## University of New Hampshire Visits 12/16

- Ritsumeikan University, Kyoto
- Shizuoka University, Hamamatsu
- Tohoku University, Sendai
- Saitama University, Saitama Prefecture
- University of Tokyo/ Institute of Industrial Science, Tokyo
- Kanto Gakuin University, Yokohama
- Tokyo University of Agriculture and Technology, Tokyo
- Waseda University, Tokyo



“Our outreach was more successful than we imagined... there is more potential with and interest on the part of the Japanese universities than we are realistically able to pursue.”

*Dr. Greg Orificci, Director of Global Initiatives, UNH*

# TeamUp Familiarization Tour

In May-June, 2016, TeamUp guided 7 representatives of 6 institutions to Tokyo, Fukuoka and Okinawa to meet potential educational partners.



## Recipients

- University of Houston-Downtown
- University of Hawai'i Maui College
- Lurleen B. Wallace Community College
- IES Abroad
- Spelman College
- Laguardia Community College, University of New York (CUNY)

## Meetings with Potential Partners

- Waseda University
- Kyushu University
- Fukuoka Women's University
- Fukuoka University
- Okinawa International University
- University of the Ryukyus
- Okinawa Institute of Technology

The group also met with officials at:

- U.S. Embassy Tokyo
- U.S. Consulate Okinawa
- Temple University
- Hitotsubashi University



*“I think every interaction we had with the different campuses and with the other members of the group helped meet my expected outcomes. The experience helped me deepen my understanding of internationalizing my campus.”*

# TeamUp Raises Awareness

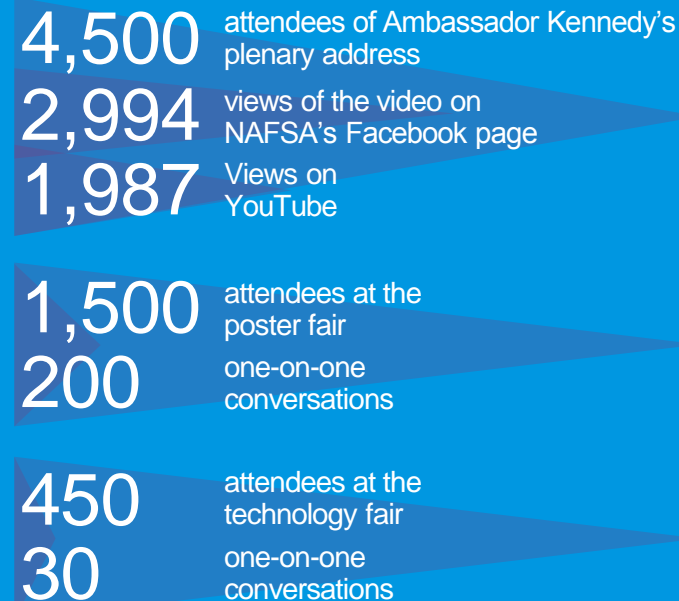


## MARCH 20, 2015 KICKOFF EVENT

- Convened 31 U.S. and Japanese college and university presidents and senior administrators
- Half-day forum in Tokyo: “TeamUp to Create a 21st Century Workforce”
- Attended by a select group of American and Japanese leaders in higher education to discuss innovations, best practices, how to establish and maintain successful partnerships, and the role of internships in fostering dynamic institutional partnerships
- Followed by a reception at Ambassador Kennedy’s residence

The Unveiling Of TeamUp  
At The NAFSA Annual  
Conference In May 2015  
The largest gathering in international  
education

## ELEVEN THOUSAND PARTICIPANTS REACHED



# 150

attendees at the  
panel discussion

# 45

attendees at the  
networking breakfast

AMBASSADOR  
KENNEDY'S TWEETS  
REACHED  
70,000 FOLLOWERS

In The 2 Years Of The Campaign, We  
Have Reached Approximately 8,000  
Individuals In Person

- By convening panels and participating in forums at conferences including those held by the Association of International Education Administrators, Asia Pacific Association for International Education, and Association of Asian Studies
- By leading networking opportunities and holding one-on-one consultations

# TeamUp Fosters The Relationships Needed For Agreements



Approximately 20% of all colleges and universities in Japan and the United States have already been involved in a TeamUp activity

## The TeamUp Roadmap Facilitates Partnerships

NEARLY  
**8,500 PEOPLE**

—the majority of whom are based in Japan—have visited our RoadMap

THERE ARE

**45** active requests to partner posted by institutions in Japan

**12** active requests to partner posted by institutions in the U.S.

## The TeamedUp Familiarization Tour Involved More Than **175 Individuals**



7 representatives of 6 U.S. institutions visited 12 Japanese universities to meet with administrators, faculty, and students

Participants also met about

**25** GOVERNMENT OFFICIALS

## The TeamUp Micro-Grant Program Will Reach Approximately **750 More**

Representatives of 10 U.S. institutions will visit a combined total of about

**50 UNIVERSITIES**

speaking with administrators, faculty, and students at each school

# TeamUp: Continuing The Good Work



## RECOMMENDED FOLLOW-ON PROGRAMS

### TeamUp Concierge

Explore hiring a specialist in U.S.-Japan educational partnerships who helps institutions find appropriate partners.

### TeamUp FollowUp

Reach out to past participants of TeamUp programs to help them identify and remove barriers to partnerships.

### TeamedUp Familiarization Tours

Continue to lead and fund annual tours of institutions in Japan by U.S. institutions seeking connections.

### Expand the TeamUp RoadMap

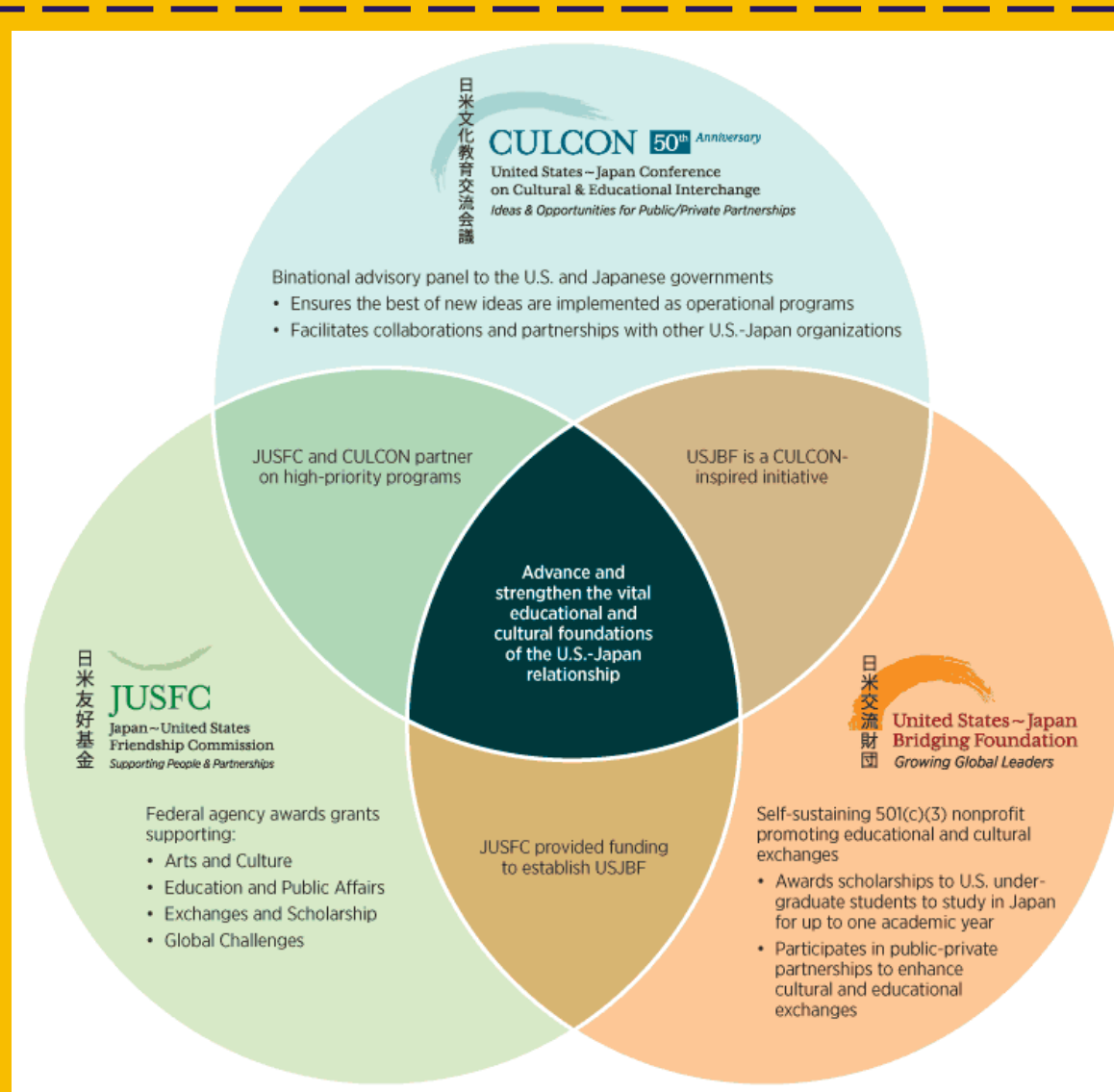
Expand the RoadMap to create an even more active resource for institutions seeking partnerships.

### TeamUp Micro-Grants

Continue to fund individualized programs for U.S. institutions to travel Japan to meet potential Japanese partners.

# Three Organizations; One Mutual Goal

Advance and strengthen the vital educational and cultural foundations of the U.S.-Japan relationship.





WASEDA University



# Waseda University's Global Engagement Strategy

**A.I.E.A. Annual Meeting  
Washington, DC  
Feb 21, 2017**

**Michael Mooney, Ph.D  
Special Advisor to the President  
Waseda University**





# About WASEDA University

- WASEDA University is a private university founded in 1882 by the 8th & 17th Prime Minister, Mr. Shigenobu OKUMA who always emphasized a spirit of “questioning authority.”

- In Japan, WASEDA University is the most famous and popular private university. WASEDA is the name of an area located in the center of TOKYO.



Shigenobu OKUMA





# Waseda University Today

## Excellence in Education and Research

- **13** undergraduate and **21** graduate schools
- **28** libraries, **5.6** million books
- **One of the top universities** receiving major government research grants

## Most International University in Japan

- Over **5,000** international students (of **50,000** students) – No.1 in Japan
- Over **700** partner institutions across **81** countries and **9** offices overseas
- **500** English-taught credited courses in **6** undergraduate and **12** graduate schools

## Attractive and Dynamic

- **No.1.** in name recognition among high school students (Recruit Corp. survey)
- About **100,000** applications for undergraduate admissions per year
- **600,000** alumni worldwide, ranked **20th** in Global Executives (Alma Mater Index)



# Waseda's Mission and "Vision 150"

## Mission

Independence of  
Scholarship

Practical Application  
of knowledge

Fostering Good  
Citizens

## Waseda Vision 150

For the 150th anniversary in 2032

1. Students of the highest caliber and character who show promise of being able to contribute to world society
2. Research that will ultimately contribute to real world peace and happiness in human society
3. Graduates who will contribute to the public good as global leaders
4. Asia's "model university" adaptable to a changing world



# Previous and Ongoing Projects Funded by MEXT

AY2003-2007

21st Century COE Program  
9 Projects

AY2004-2008

Super COE Program  
9 Projects

AY2007-2013

Global COE Program  
8 Projects

AY2012-2013

Improvement of Prominent Graduate School  
5 Projects

AY2012-

Program for Leading Graduate Schools  
2 Programs

AY2013-

Program for Promoting the Enhancement of Research Universities

Promoting Internationalization of University's Education Project  
2 projects

AY2005-2008

AY2007-2010

Project for Establishing University Network for Internationalization (Global 30)  
5 Schools, 6 Graduate Schools

AY2009-2013

Re-Inventing Japan Projects  
4 Faculties

AY2011-

Go Global Japan Project

AY2012-

Enhancing Development of Global Entrepreneur Program

AY2014-

Re-Inventing Japan Project  
Campus Asia

AY2016-

## Top Global University Project

**“Waseda Goes Global” Plan to Accelerate Waseda Vision 150**  
An open, dynamic and diverse education and research network

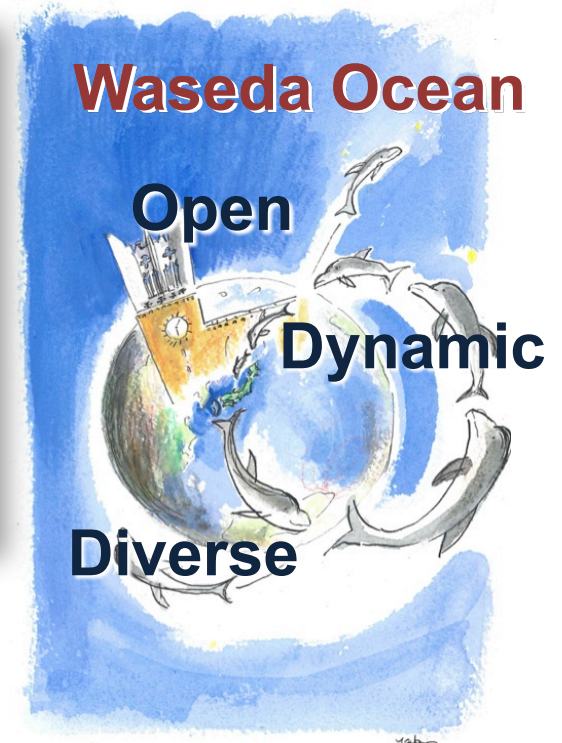
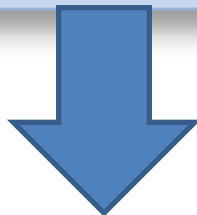


# “Waseda Goes Global” Initiative

Top Global University Project by the Government of Japan (Type A : 13 top universities were selected)

**Globalize education and research programs – Plan to Build a Worldwide Academic Network that is Open, Dynamic and Diverse**

1. Develop education and research programs to solve global challenges and help build the future
2. Globalize education and research programs
3. Reform the faculty recruitment process and university governance





# Waseda Goes Global - Targets for 2023

## Two Major Objectives for Building Worldwide Academic Network

1. Produce **100,000 graduates with global perspective** within 10 years
2. Rank among the **World's Top 100 Universities** in 18 areas in 10 years

### Global Research

Incoming Visiting Researchers  
(over 1-month stay)

810 ▶ **1,600**

Outgoing Visiting Researchers

179 ▶ **500**

### Global Education

Students studying abroad

3,076 ▶ **10,650**

International Students

4,415 (8.4%) ▶ **9,165 (19.2 %)**

### Strengthening Research Funds

External Research Funds

8.9 billion yen ▶ **20 billion yen**

Donations

2.2 billion yen ▶ **10 billion yen**

### Reform for Global Standards

“International” Faculty

760 (45.3%) ▶ **1,380 (75%)**

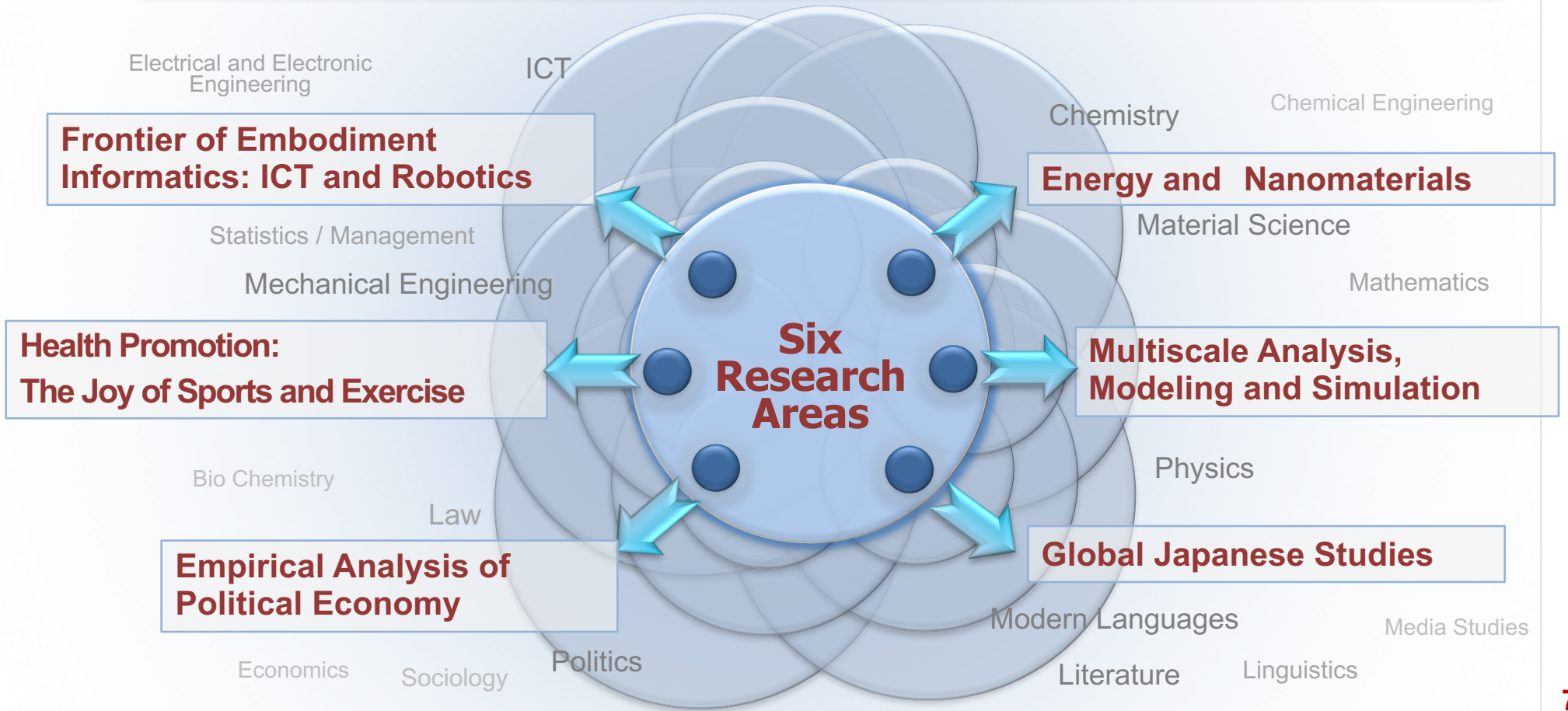
Faculty under Annual Salary Systems

99 (5.9%) ▶ **791 (43%)**



# Priority Research Areas ↔ Six Model Units

Waseda will build on excellence in six research areas, collaborating with high-level universities around the world





# ICT & Robotics / Nano Energy Materials

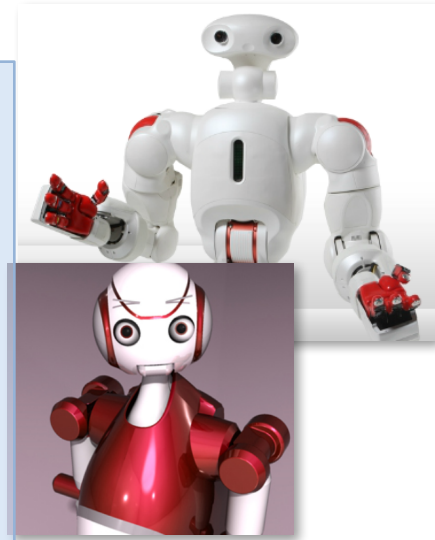
## Frontier of Embodiment Informatics Unit

### Fostering innovation in ICT and Robotics

- The fusion of mechanical engineering and computer science and engineering
- Leading graduate program for embodiment informatics (System-Next)
- Fostering innovation in Robotics and Information and Communication Technology

### Collaborating Institutions

Technische Universität München / Scuola Superiore Sant'Anna / Carnegie Mellon University



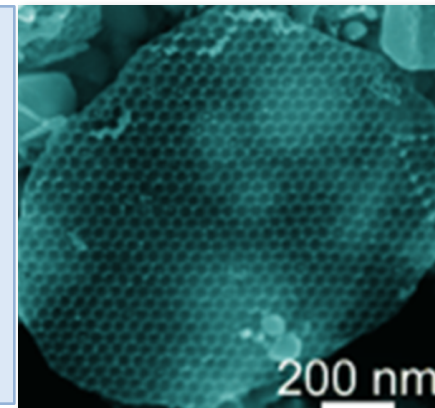
## Energy and Nano Materials Unit

### Developing human resources to lead the Energy-Next Initiative

- The research for completely new energy sources and a combination of energy processes
- Large-scale production and optimization of energy systems
- Leading graduate program in science and engineering (Energy-Next)

### Collaborating Institutions

University Bonn / Monash University / University Washington







# Health & Sports / Physics & Mathematics

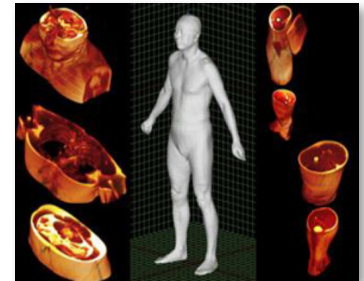
## Health Promotion Unit

**Building a society where everyone can maintain healthy and enjoyable lifestyles**

- Promotion of health, integrating a number of sports research areas concerning middle-aged and elderly people's participation in sport
- Management policies for creating sports environments
- Building infrastructure for improving athletic abilities

**Collaborating Institutions**

Loughborough University / Deutsche Sporthochschule Köln / Tsinghua University / University of Calgary



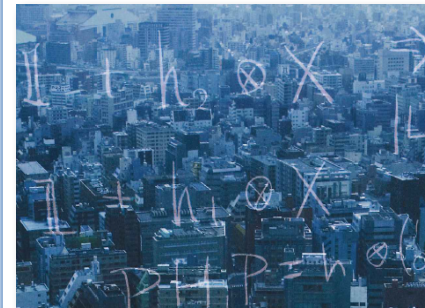
## Multiscale Analysis, Modeling and Simulation Unit

**Making physics and mathematics a driving force of civilization**

- Developing human resources capable of performing mathematically rigorous modeling based on physics, basic engineering, and simulations based on Numerical analyses

**Collaborating Institutions**

Technische Universität Darmstadt / Università di Pisa / Scuola Normale Superiore, Pisa  
Università degli Studi di Bari Aldo Moro





# Political Economy / Global Japanese Studies Unit

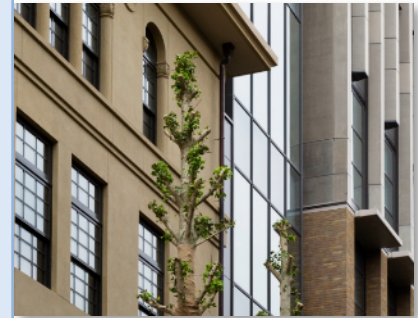
## Empirical Analysis of Political Economy Unit

**Aiming to become a world-leading center for positive political economy research**

- Developing world-leading public opinion polls for realizing rule-making and policymaking
- Analysis for corporate governance and finance as well as structure and strategy, and accounting behavior

### Collaborating Institutions

University of Oxford / Johns Hopkins University / Woodrow Wilson International Center for Scholars



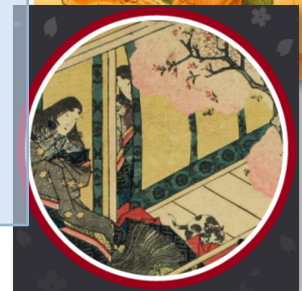
## Global Japanese Studies Unit

**Seeking global perspective in Japanese culture studies**

- Re-examining Japanese culture from a genuinely global perspective by developing institutional hubs for an international scholarly network of Japanese studies

### Collaborating Institutions

UCLA / Columbia University





# Six Model Units

**The Six model units are the driving force to spread new and open systems and programs across the university**

A diagram consisting of a light blue pyramid with a pink tip. Three horizontal blue bars are overlaid on the pyramid, each containing white text. The bars are positioned at the top, middle, and bottom of the pyramid's body.

**Strong Financial Base**

**New Recruitment Policies and Flexible Systems**

**Campus Support for Visiting Scholars**



上智大学  
SOPHIA UNIVERSITY

叡智が世界をつなぐ

# Sophia University

“Men and Women, for Others, with Others”



**A University with Global Mission  
Tokyo, Japan**

# Sophia Overview 1/2

**Japanese name: “Jochi Daigaku” (上智大学)**

**Sophia University was founded by Jesuits in 1913:  
mission to establish bridges between Japan and the world**

**Located in the heart of Tokyo**

**Pioneer in International Education in Japan**

# Sophia Overview 2/2

**In 1949 we established Japan's first program taught entirely in English.**

**We continue to lead Japanese academic world in offering international programs:  
Worldwide Network with 283 Partner  
Universities from 54 Countries (as of 2016.10)**

**Educational philosophy of  
the Society of Jesus**

**“Men and Women, for Others, with Others”**

# International Students/Faculty (2016)

**1465 International Students  
from 77 Countries**

**China (38%)**

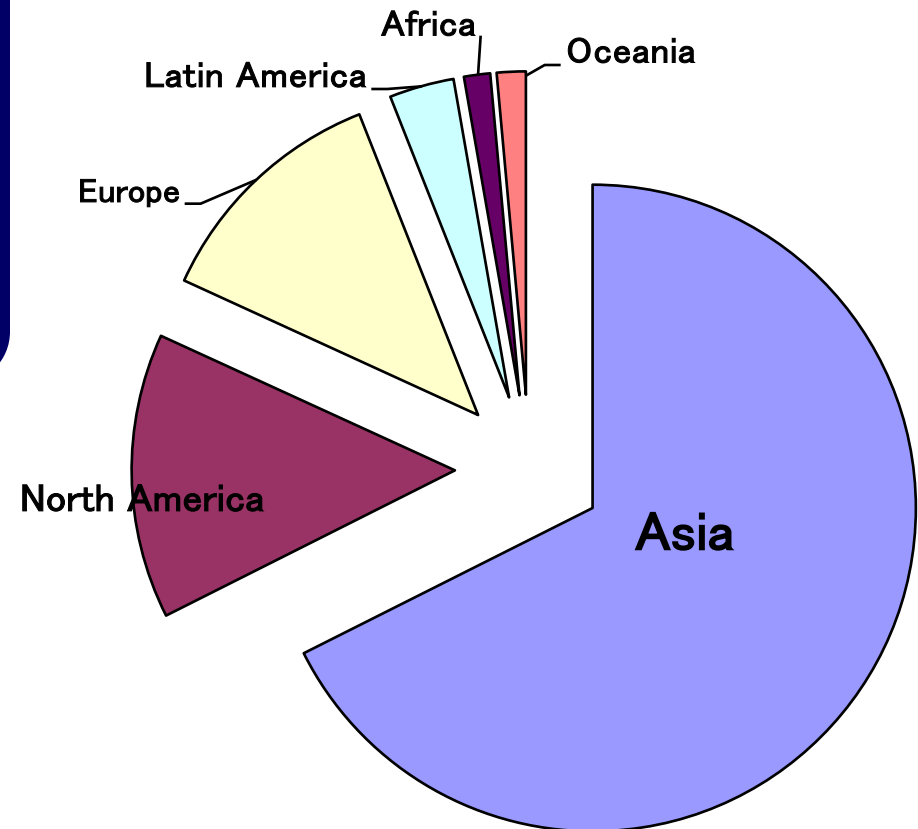
**South Korea (16%)**

**USA (13%)**

**Europe (12%)**

**67% of International  
Students, from 18  
countries in Asia**

**15% of full-time faculty  
members from overseas**



# Academic Programs - Undergraduate

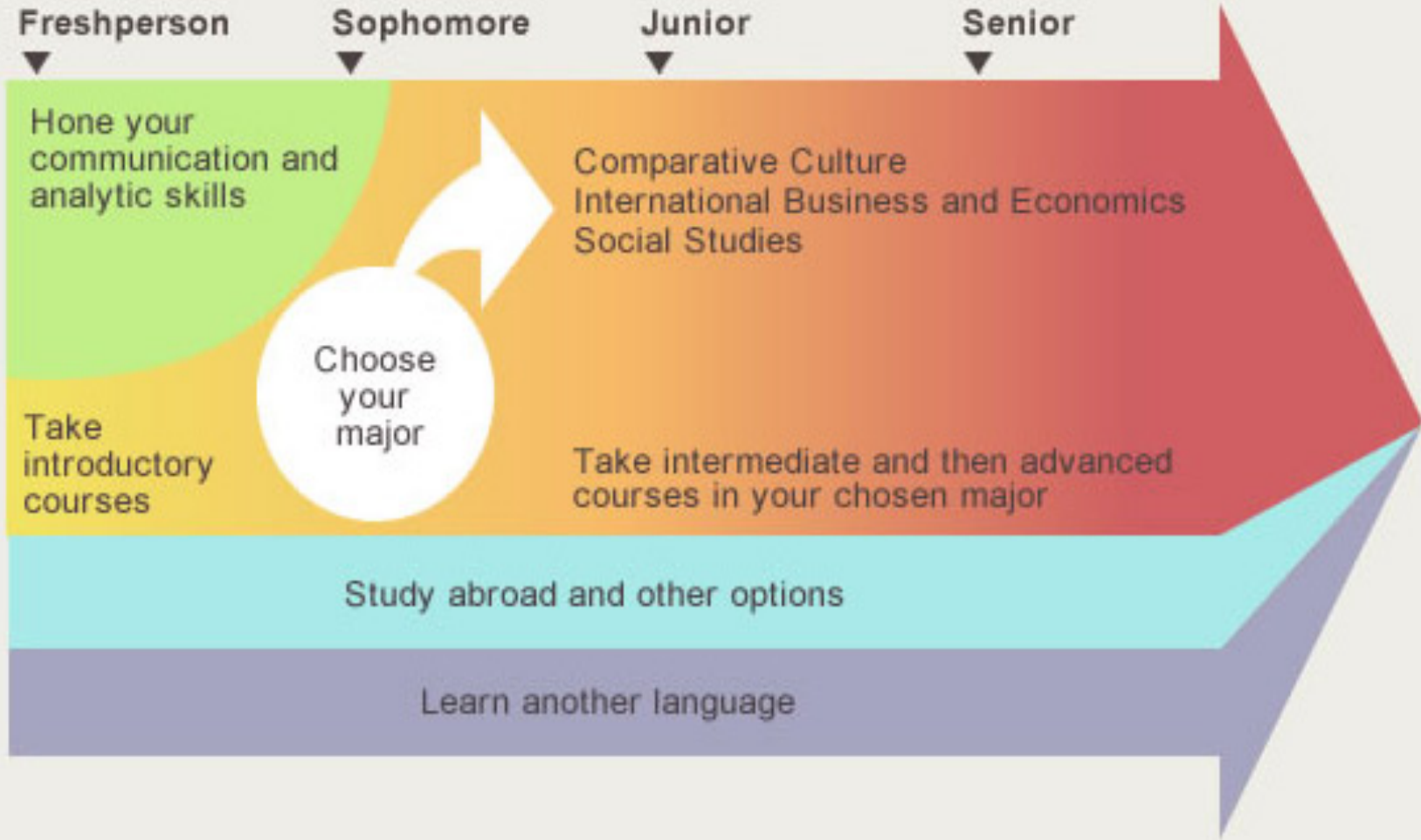
## 9 Undergraduate Faculties, 29 Departments

1. Theology
  2. Humanities
  3. Human Sciences
  4. Law
  5. Economics
  6. Foreign Studies
  7. Global Studies (since 2014)
  8. Liberal Arts \*
  9. Science & Technology
    - Green Science (since 2012) \**
    - Green Engineering (since 2012) \**
- \* = English-based programs





# Program Structure of Faculty of Liberal Arts, (English taught program)



# Contents of Core Program, Faculty of Liberal Arts

## Core Program

reading skills course,  
sequence of composition courses  
public speaking course  
critical thinking.



## Major

Comparative Culture  
International Business and Economics  
Social Studies



grasp the expansive and interdisciplinary nature of a liberal arts education through a close engagement with a wide range of texts and topics, prepares them for choosing a major field of study

The learning goals and objectives of the Core Program emphasize the development of clear, effective, and critical communication in both speaking and writing, as well as the habits of mind that foster integrative thinking and the ability to transfer knowledge and skills from one setting to another.

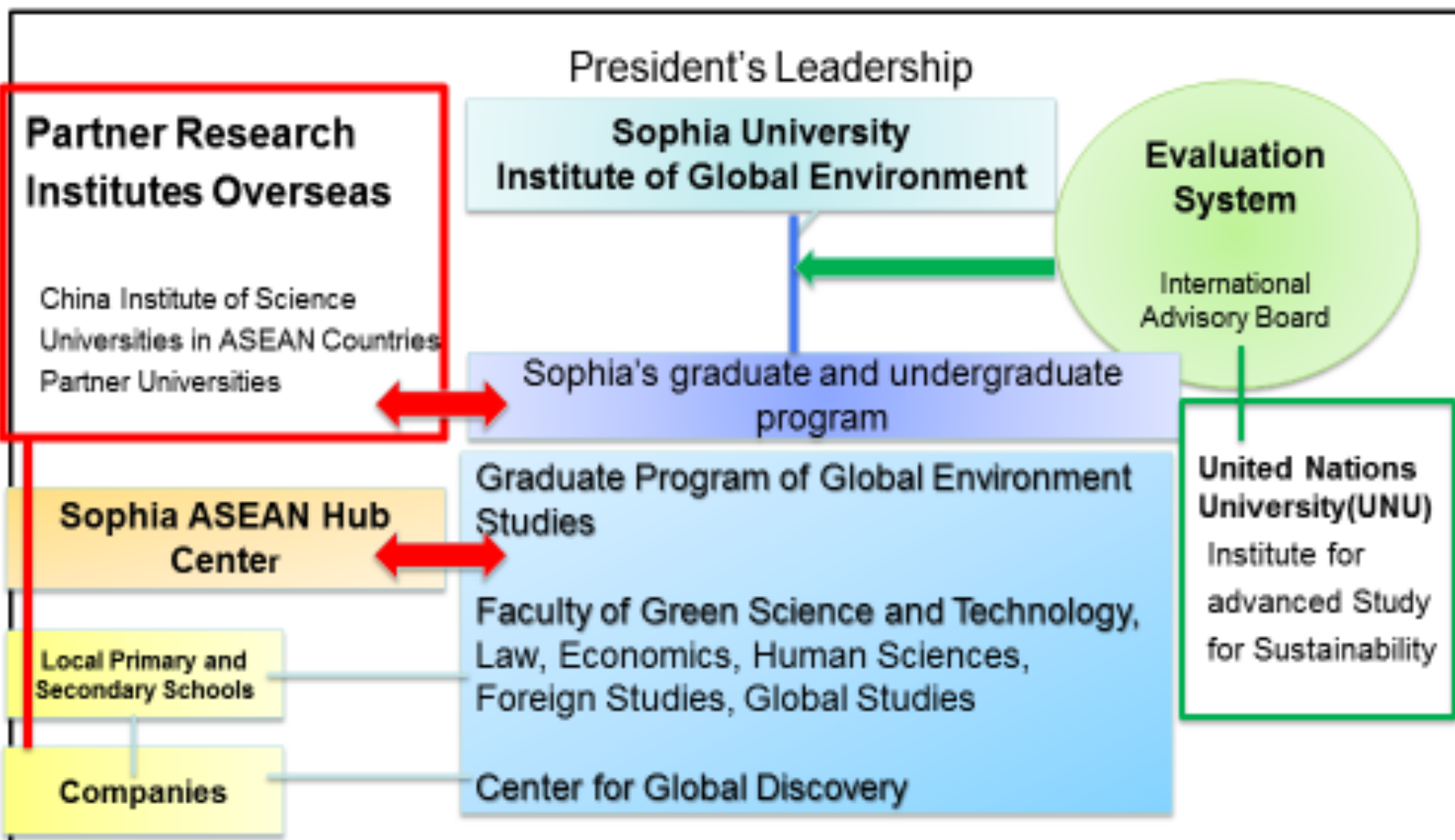
# Academic Programs - Graduate

## 10 Graduate Schools, 26 Programs

1. Theology
  2. Applied Religious Studies
  3. Humanities
  4. Human Sciences
  5. Law
  6. Economics
  7. Language and Linguistics (TESOL Program \*)
  8. Global Studies \*
  9. Science & Technology  
*Green Science and Engineering (since 2013) \**
  10. Global Environmental Studies \*
- \* = English-based programs



## Trans-Disciplinary Environment Research



# Sophia ASEAN International Mobility for Students (SAIMS) 2013-2018

## Trans-Disciplinary Human Development Education Program Aiming for Harmonized Diversity

### 【Aim of project, Ideals of Global Human Resource on the project】

The aim is to establish a new model for international higher education through collaboration between Japan and Southeast Asian countries.

This project provides an educational platform in which students from Southeast Asia and Japan study together to analyze and engage in global issues in Asia and the world.



### 【Summary of project】

Trans-disciplinary program focused on “Human Development,” which combines the disciplinary frameworks of natural sciences, social sciences, and humanities. *“Human Ecology: Diversity and Connectivity of Society and Nature”* is the main theme, under which students will select courses from the areas of “Engineering” and “Language & Culture,” while taking one required course, “Introduction to Trans-Disciplinary Human Development (TDHD).” Students may also participate in the fieldwork seminar “Human Ecology: Rivers” and the Summer Session in Asian Studies offered in August.

# Summer Session in Asian Studies

## ■ **Late July – Mid August**

Since 1961, Sophia University's Summer Session in Asian Studies has provided students with the opportunity to learn about traditional and contemporary Japan.



# Worldwide Partner Institutions

**294 partner institutions from 58 countries  
(As of February 2017)**

## **North America**

Georgetown University  
University of California, Berkeley  
University of Pennsylvania  
University of British Columbia

## **Europe**

University of Edinburgh  
Institut d'Etudes Politiques de Paris  
Universität Heidelberg  
Università di Roma "La Sapienza"  
Leiden University  
Moscow State University

## **Latin America**

Pontificia Universidad Católica de Chile  
Universidade de São Paulo  
National Autonomous University of Mexico

## **Asia**

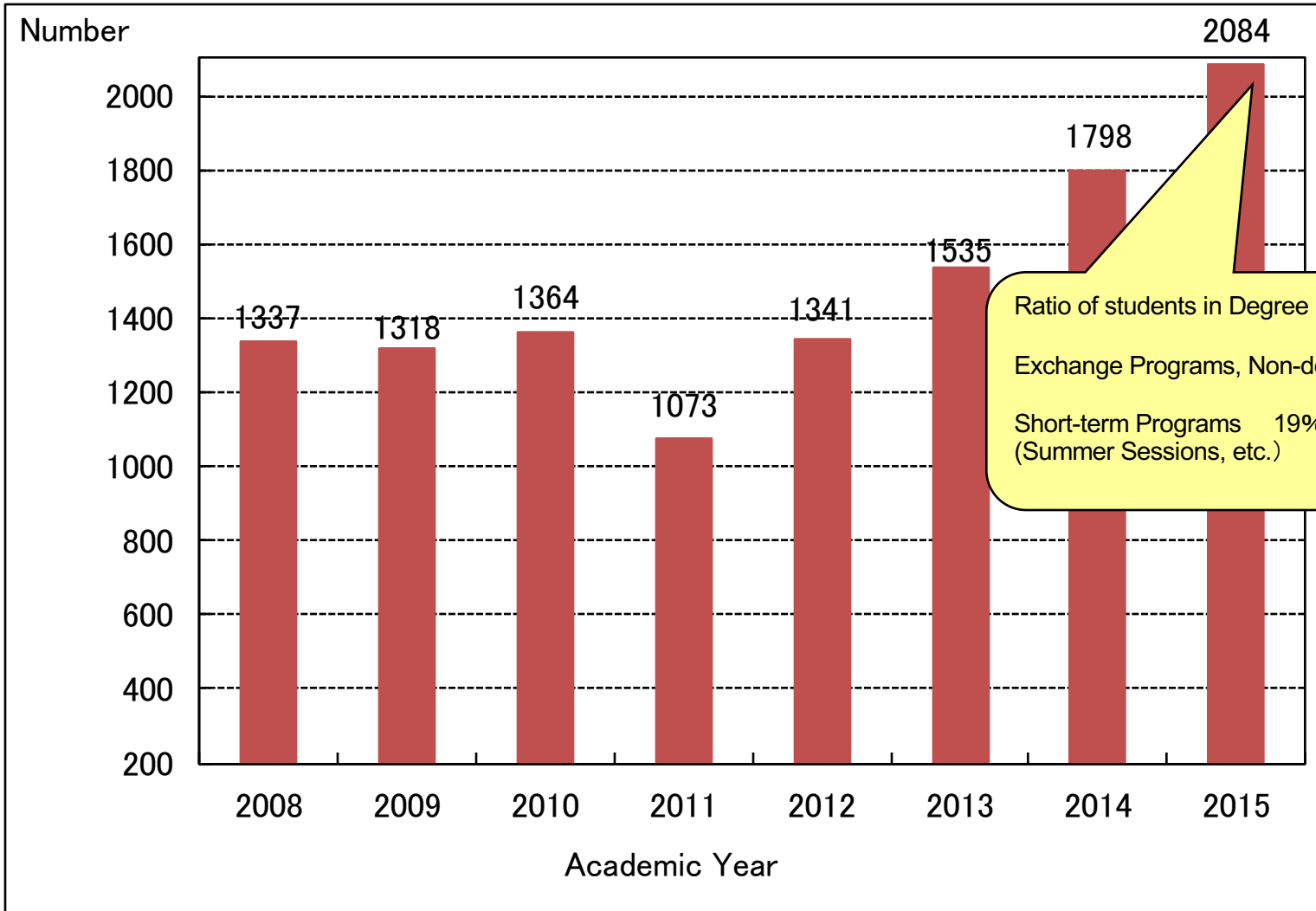
Tsinghua University  
Fudan University  
The University of Hong Kong  
Yonsei University  
Ateneo de Manila University  
Chulalongkorn University

## **Oceania**

The University of Melbourne  
The University of Queensland  
The University of Auckland

## Current Situations ①

### Number of Incoming Foreign Students (Academic years of 2008~2015)

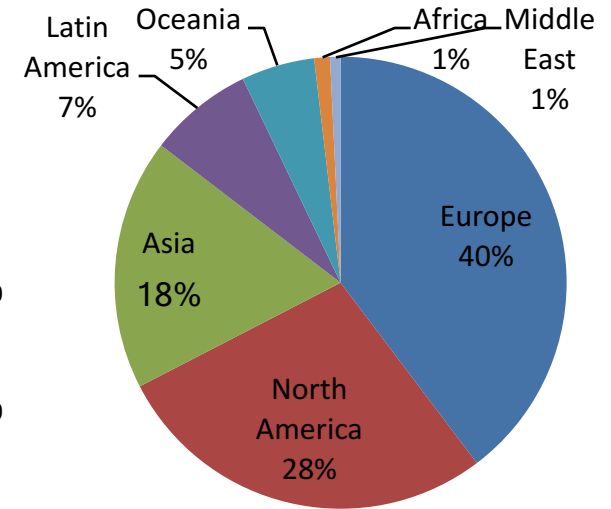


※Degree, Foreign Exchange, Non-Degree Students and Students in Short-term Programs with Foreign Nationalities.

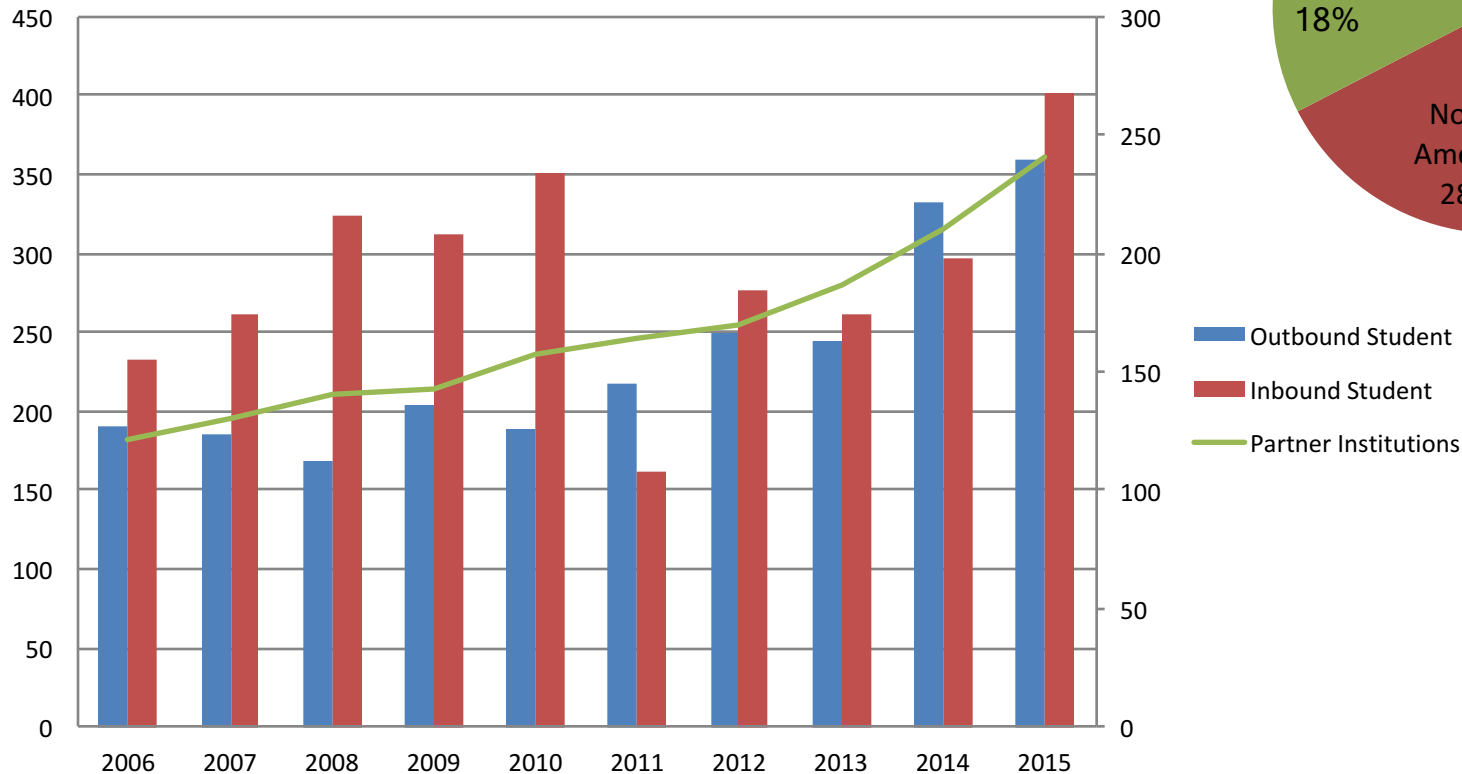


# Current Situations ②: Student Exchange between Sophia & Overseas Partners

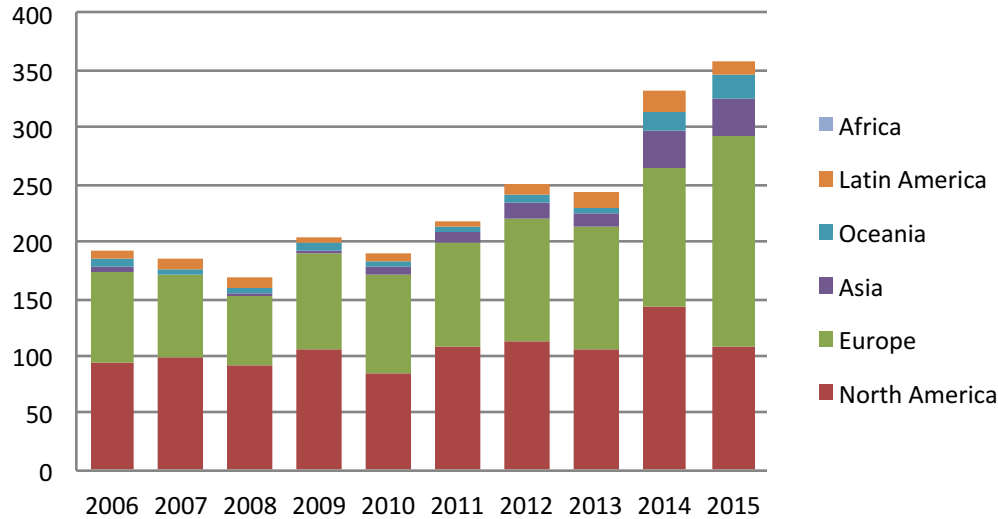
Ratios by Regions (2015, 266 institutions)



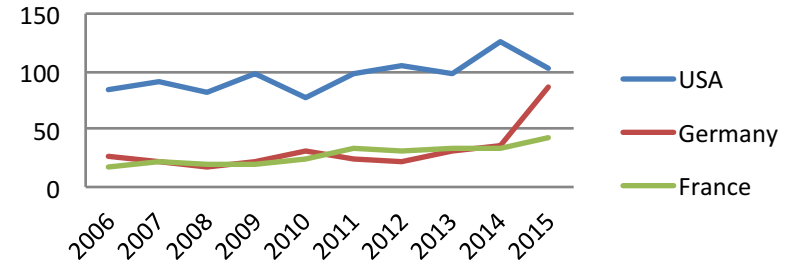
## Student Exchange between Sophia & Overseas Partners



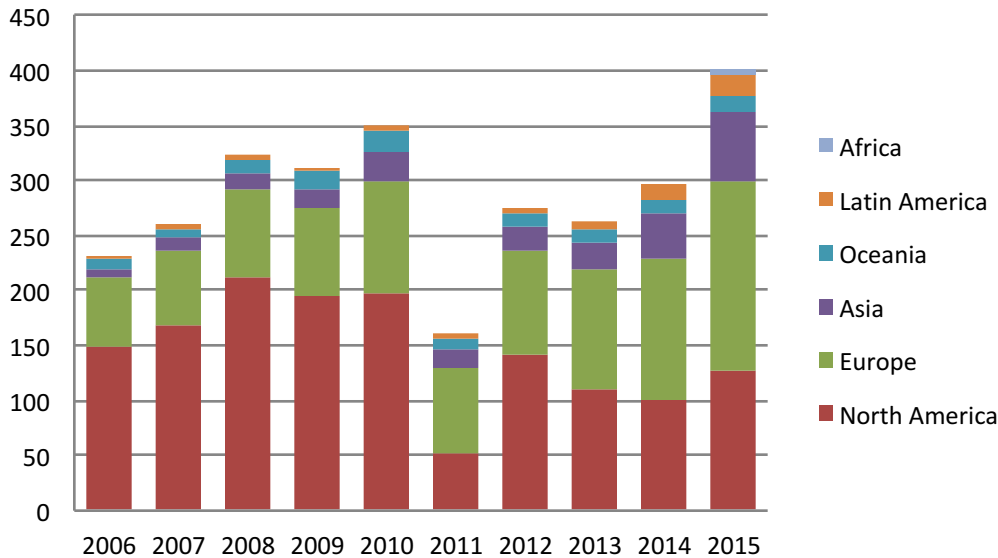
## Outbound Exchange Students-Sophia University



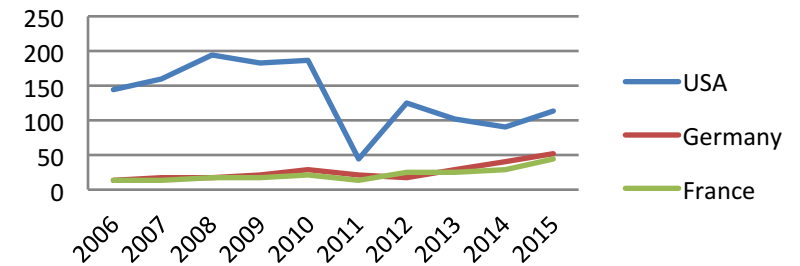
## Top3 Countries - Outbound Students



## Inbound Exchange Students-Sophia University

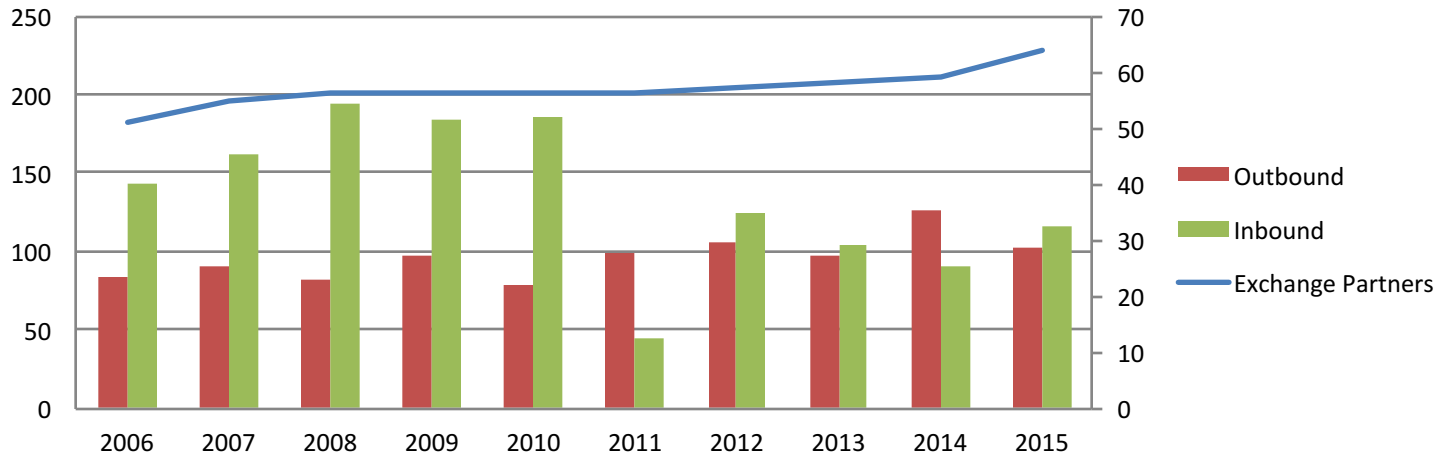


## Top3 Countries - Inbound Students

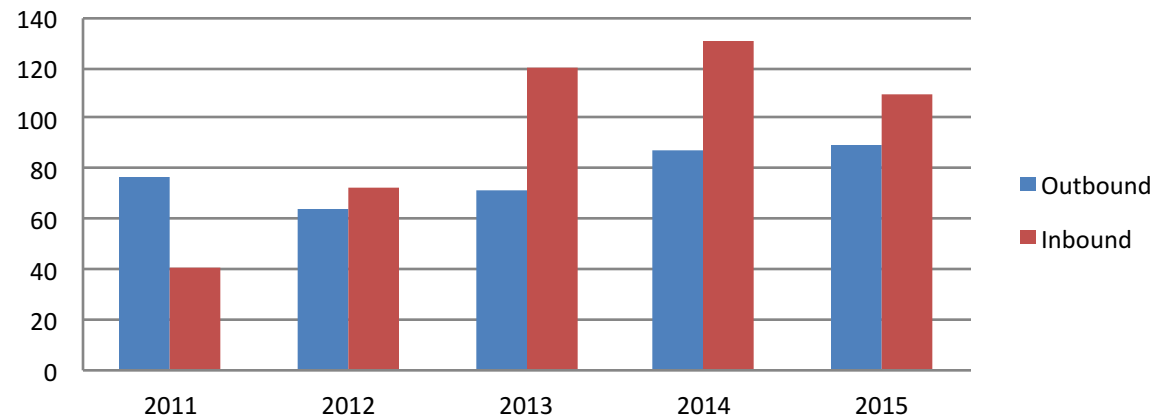


# Current Situations ②: Student Exchange between Sophia & US Partners

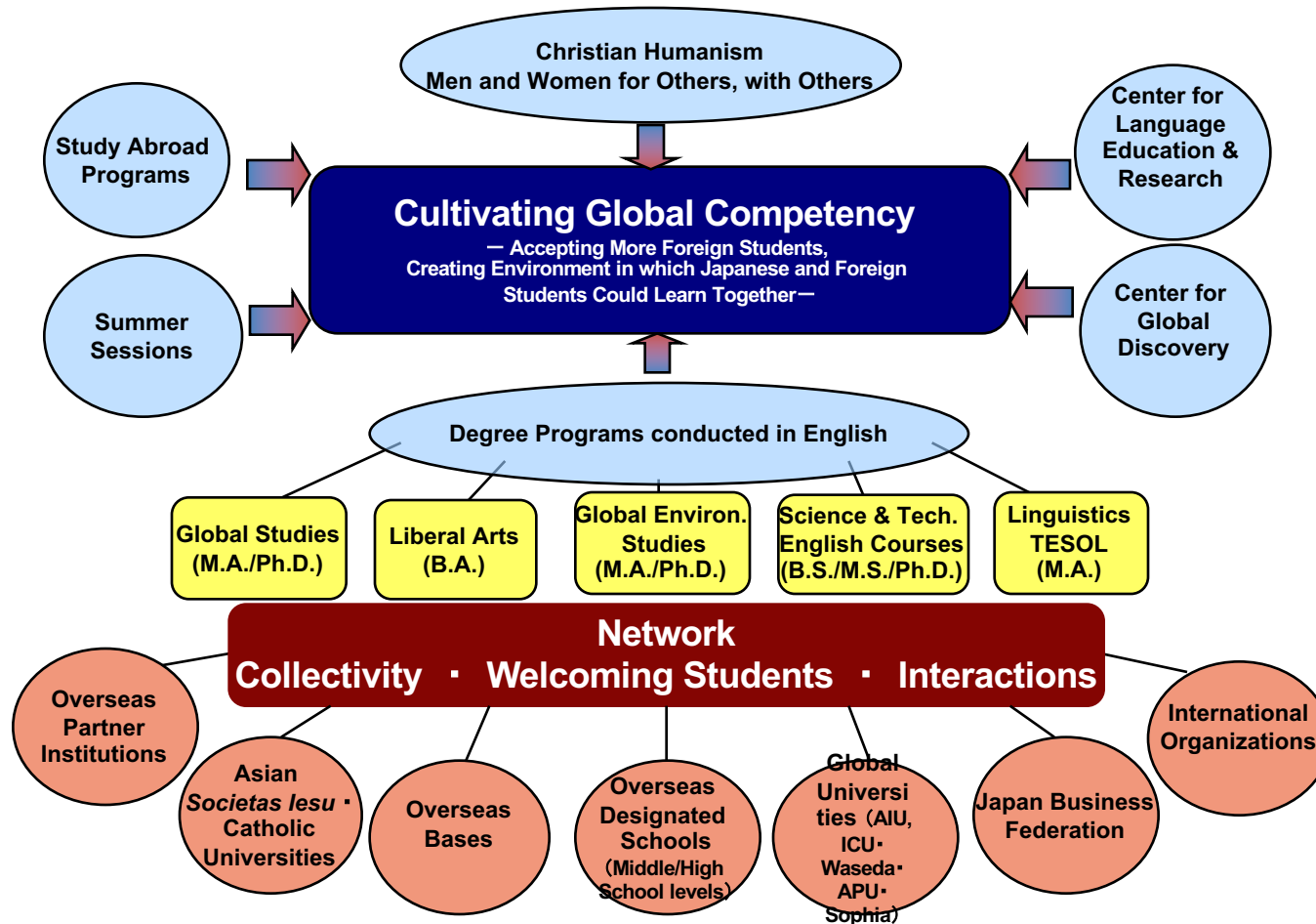
## Student Exchange between Sophia & US Partners



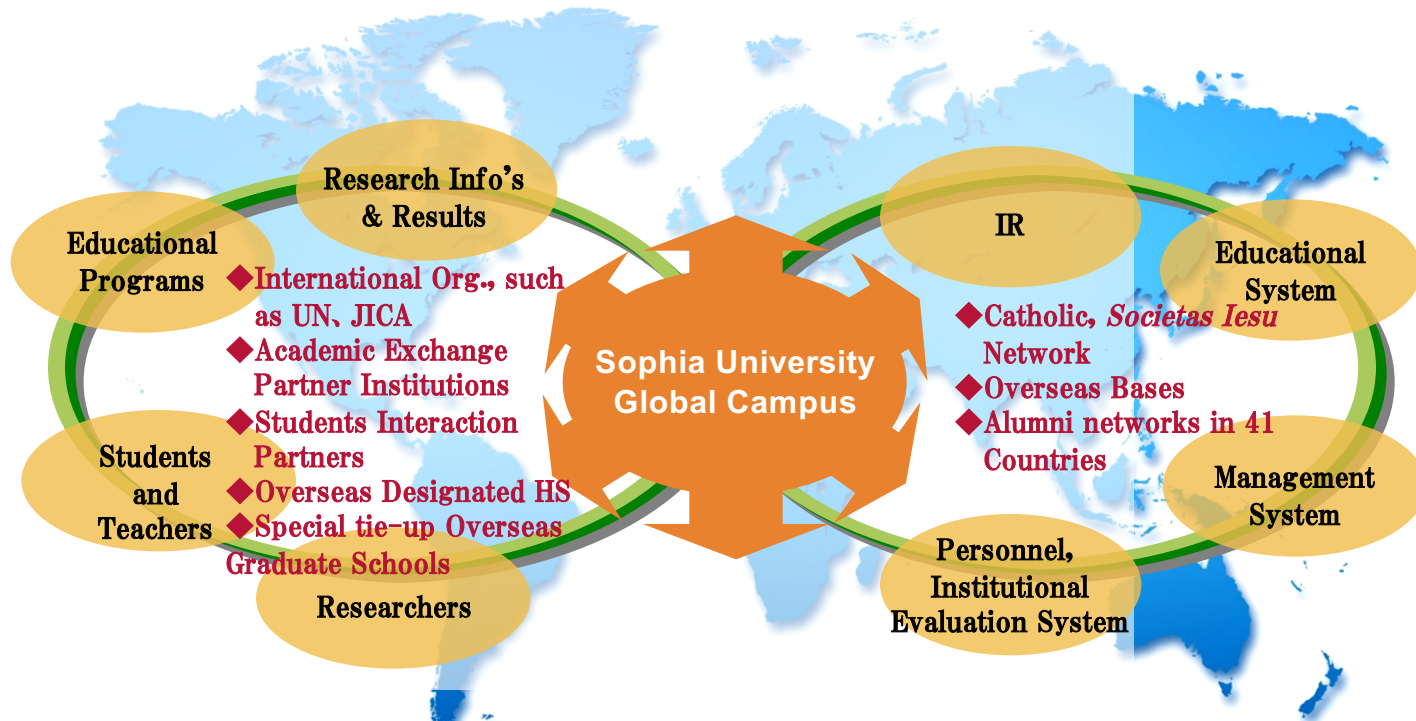
## Short-term Program -Inbound & Outband between Sophia & US Universities



# Sophia's International Network Strategy



To establish a an exchange platform as a connection point of human resources, education, research and governance



## Multilayered Network & Connect Hubs

Sophia Bringing the World Together

叡智が世界をつなぐ



上智大学  
SOPHIA UNIVERSITY

# Strategic Approach for Global Partnerships and Effective Use of the UMAP

Shingo Ashizawa  
Toyo University



**TOYO UNIVERSITY**



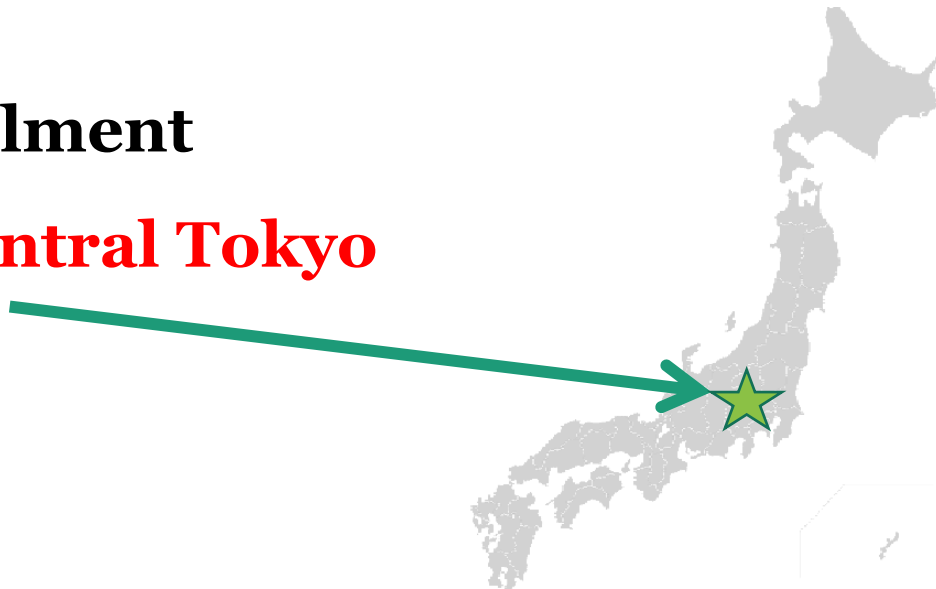
# TOYO UNIVERSITY

## Who are we?

- Established in 1887
- Started as a philosophy academy
- Grew into comprehensive university with 11 undergraduate programs and 11 graduate schools
- 30,000 enrollment
- **Located in central Tokyo**

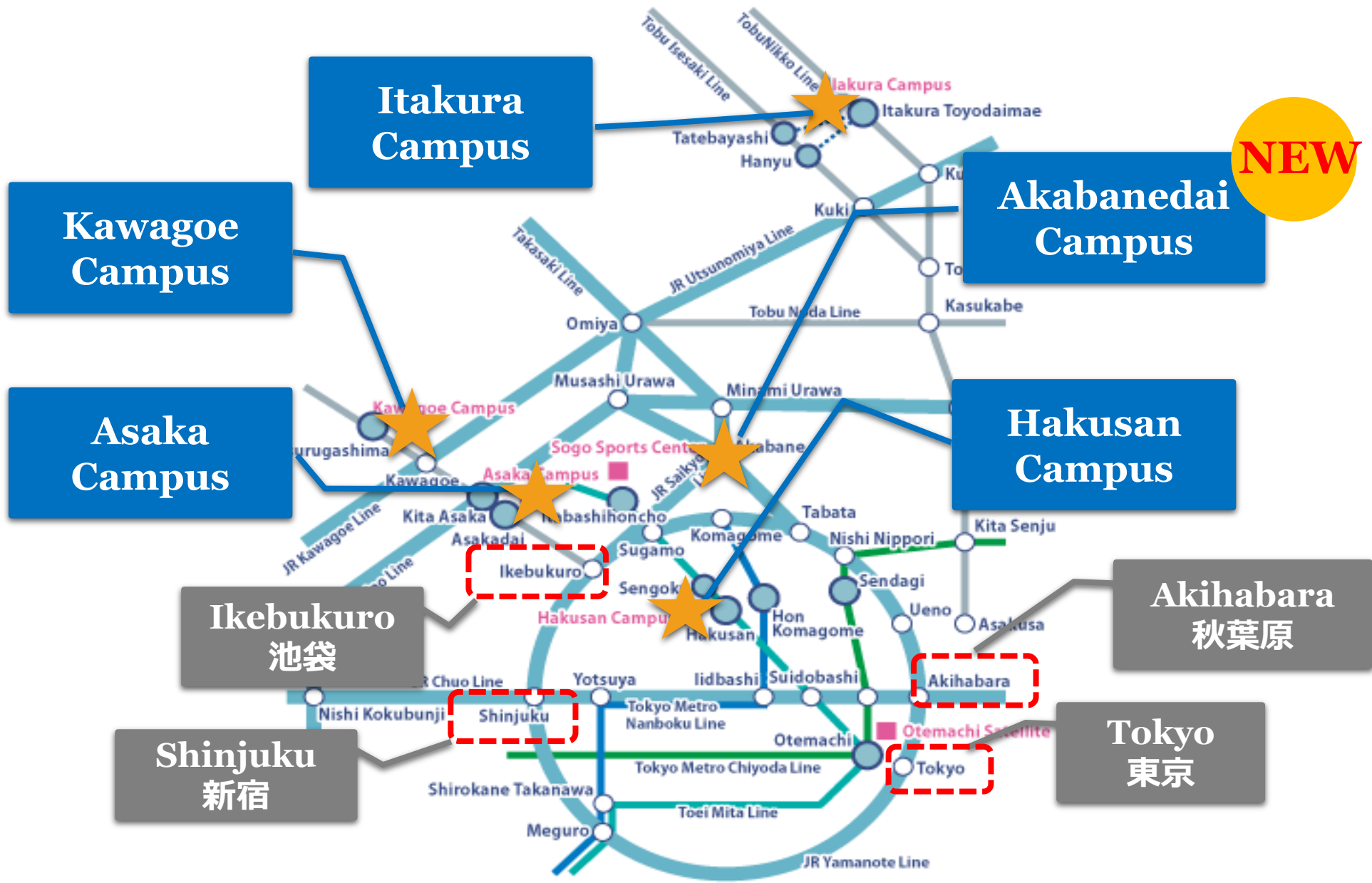


**Founder  
Dr. Enryo Inoue**





# Campuses



# Three Pillars for Nurturing Globally Talented Individuals

## **PHILOSOPHY EDUCATION**

Promoting education rooted in philosophy as a study which determines the principles behind all phenomena.

## **CAREER EDUCATION**

Offering effective support to help students become established in their careers.

## **INTERNATIONALI- ZATION**

Fostering linguistic proficiency, cross-cultural understanding, and other abilities useful for playing important roles on the global stage.

# Efforts in Internationalization

## 国際化への取り組み

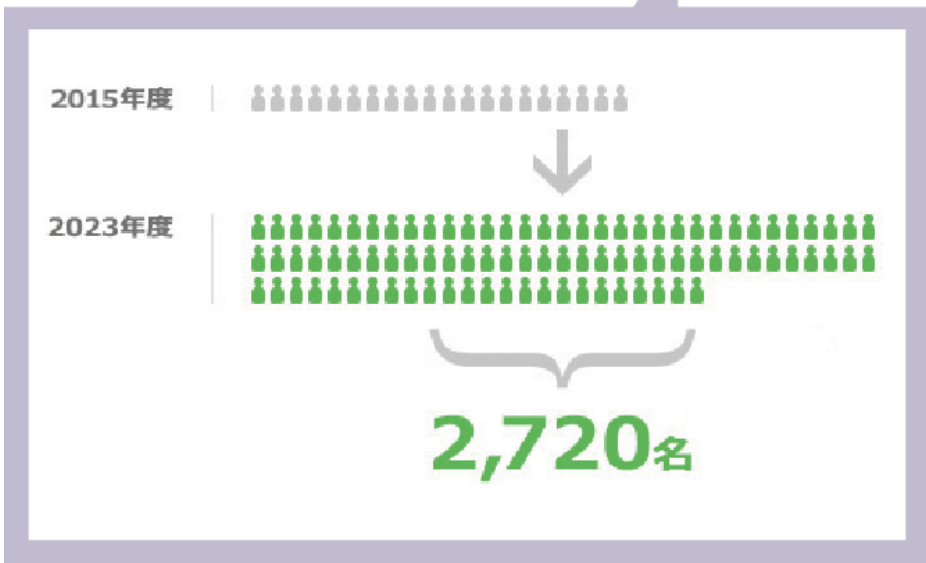
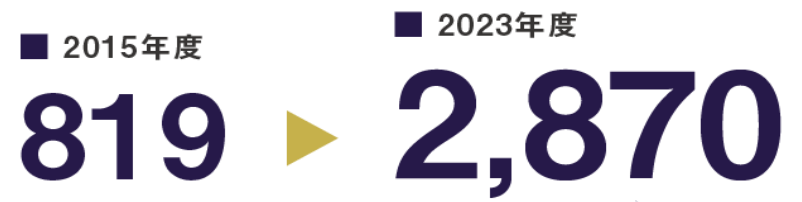
※ 2015年度データは2015年11月現在

Number of international students

全学生に占める外国人留学生数  
(大学院含む)

Number of Japanese students who study abroad

日本人学生に占める留学経験者数  
(大学院含む)



# Efforts in Internationalization

## 国際化への取り組み

※ 2015年度データは2015年11月現在

No. of courses offered in foreign languages

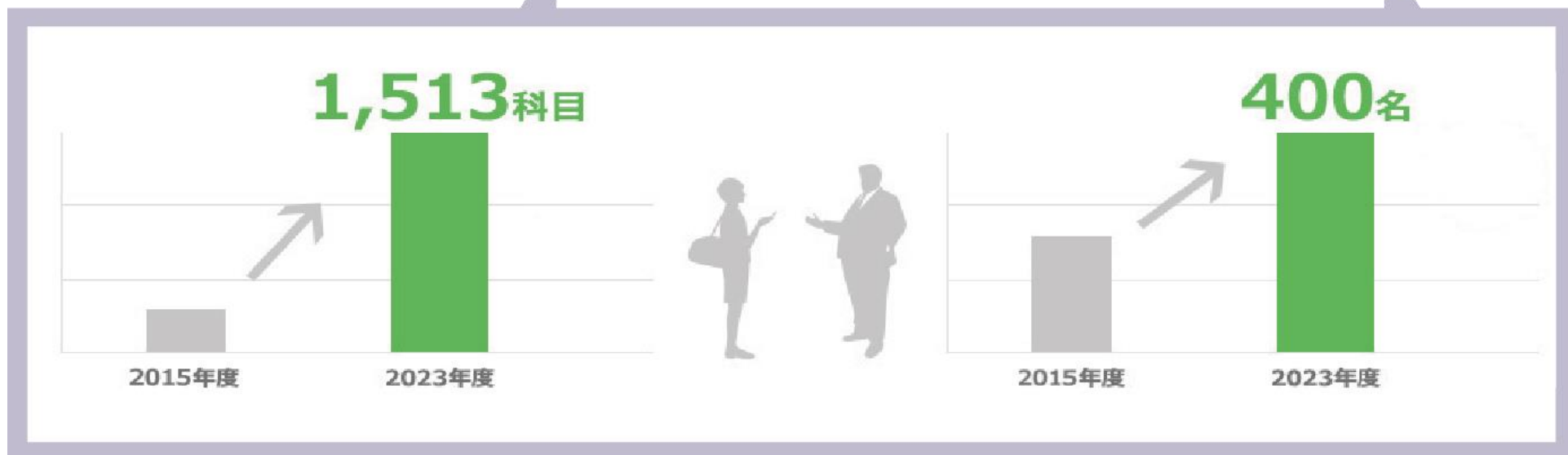
外国語による授業科目数  
(大学院含む)

■ 2015年度  
**326** ▶ **1,513**  
■ 2023年度

No. of non-Japanese faculty members


外国人および海外学位取得教員  
(大学院含む)


■ 2015年度  
**231** ▶ **400**  
■ 2023年度



# Undergraduate Programs (English Track)

New in April 2017

Faculty		Department	Educational Goal
<b>Global and Regional Studies</b> 	The Faculty of Global and Regional Studies aims to develop practical human resources that can play an active role in the dynamically changing global community, in which a variety of issues – such as economic, poverty-related, resources-related, environmental, and conflict-related issues- are constantly emerging. There is a critical need for innovation in various social systems as well as their background cultures and values.	<b>■ Global Innovation Studies</b>	GIS develop new leaders with an international outlook who can work within existing frameworks and establish new systems to create innovative solutions to the unprecedented challenges which today's generation faces.
		<b>■ Regional Development Studies</b>	In RDS, students acquire the ability to see various issues in countries, regions , and communities around the world from a global perspective. It aims to train experts who can promote hands-on regional development mainly in Asia through business activities and development assistance.

Faculty	Department	Educational Goal
<b>Information Networking for Innovation and Design</b> 	<b>■ Information Networking for Innovation and Design</b>	The Faculty of Information Networking for Innovation and Design is being designed to develop individuals with expertise in the comprehensive management of information and the promotion of technological innovation. Students will acquire proficiency in networking and managing information by using state-of-the-art ICT (information and communication technology), cloud computing, and big-data analysis.



**TOYO UNIVERSITY**

# **Toyo Top Global Scholarship Type A**

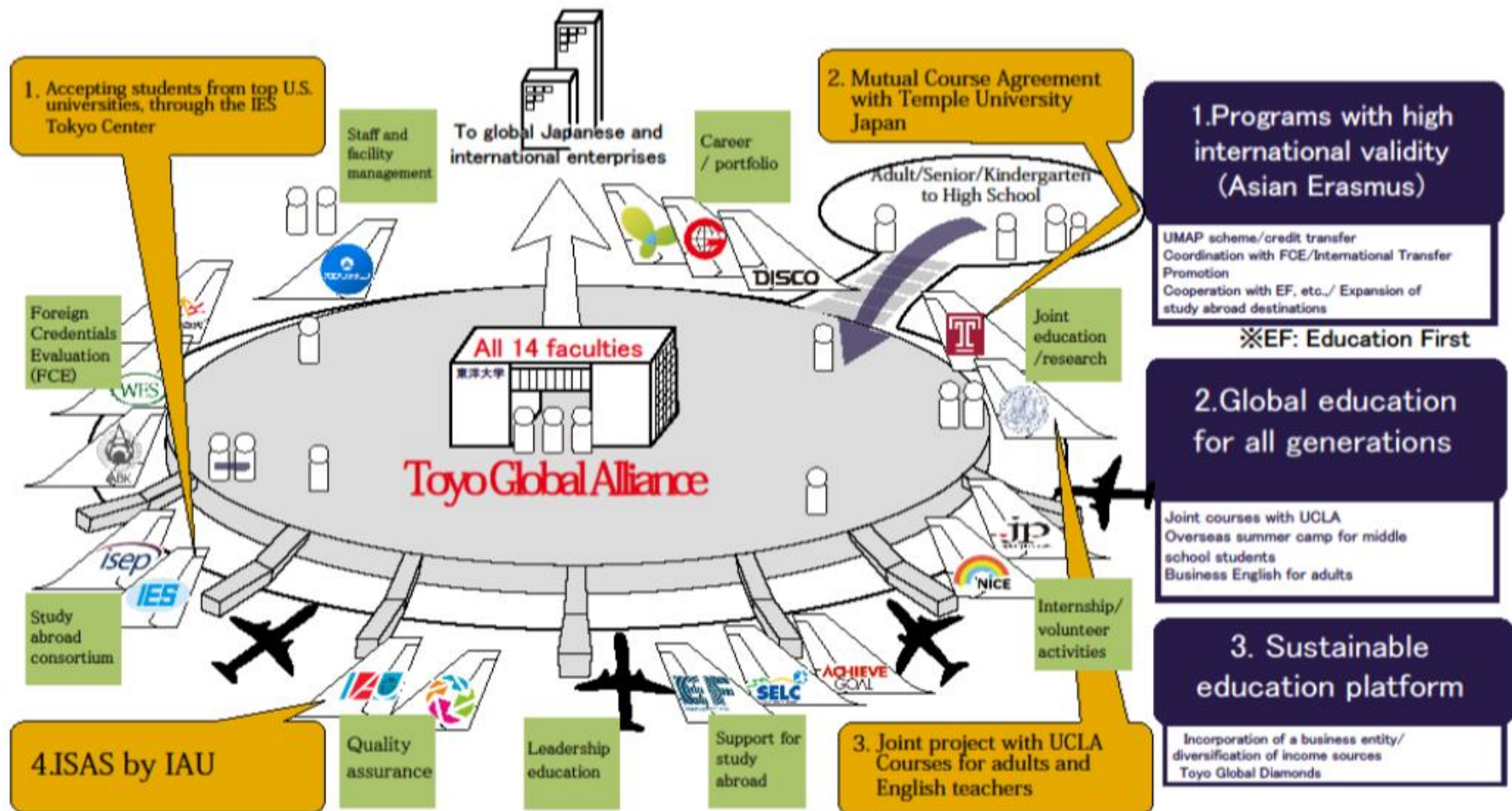
- Tuition and all associate fees waived
- Scholarship  
150,000 JPY / month
- 60 Spots Available
- Period: 4 years
- English Medium  
Instruction



# Toyo Global Alliance

## Establishment of “Toyo Global Diamonds” in 2017

→ Aim for “self-sustainability” after project completion



# Self introduction



- Saki TAMURA
- Senior, TOYO UNIVERSITY (2012 - 2017)
- Studied abroad in the state of Maryland (August, 2014 - May 2015)
- Doing an internship in DC (February, 2017 - March, 2017)





# Language Center



Writing Consulting



PSA (Pre-Study Abroad) Program



TOEIC & Conversation



Internship Application Program



# LEAP (Learning English for Academic Purposes)

- TOEFL preparation
- High level academic English Skills  
taking notes, writing essays,  
and participating in discussions
- Deep exploration of Japanese issues
- Insights into Japan in English



# English Community Zone (ECZ)

Weekly workshop



Daily activity



Farewell party  
(Monthly event)



# ECZ staff



Staff members in Fall2015



Staff members in Spring2016



# Residence Assistance (at International house)



Emergency training  
At the orientation week

Aikido Lesson (Monthly event)



# TOBITATE! Young Ambassador Program



- With financial support from private companies, MEXT, and JASSO
- Students can make their own plans for time studying-abroad.
- Tobitate ! Allows them to attempt to do anything they would like to do in a foreign country.



Music education, Honduras

# TOBITATE! Young Ambassador Program



Soccer, Spain



Intern at UNDP, Bangladesh



IT at Stanford University, United States



# **Promoting Student Mobility in Asia and the Pacific**

An introduction to

**U M A P**  
University Mobility in Asia and the Pacific





# What is UMAP?

- UMAP is an acronym for the “**U**niversity **M**obility in **A**sia and **P**acific”.
- Initiated in 1991, it is a voluntary association of government and non-government representatives of the higher education (mainly university) sector.
- Its aim is to enhance international understanding by facilitating mobility of university students and faculty members within the Asia-Pacific region.



# Conference to Discuss Higher Education Co-operation in Asia/Pacific Region (Canberra, Australia, 17-19 September 1991)

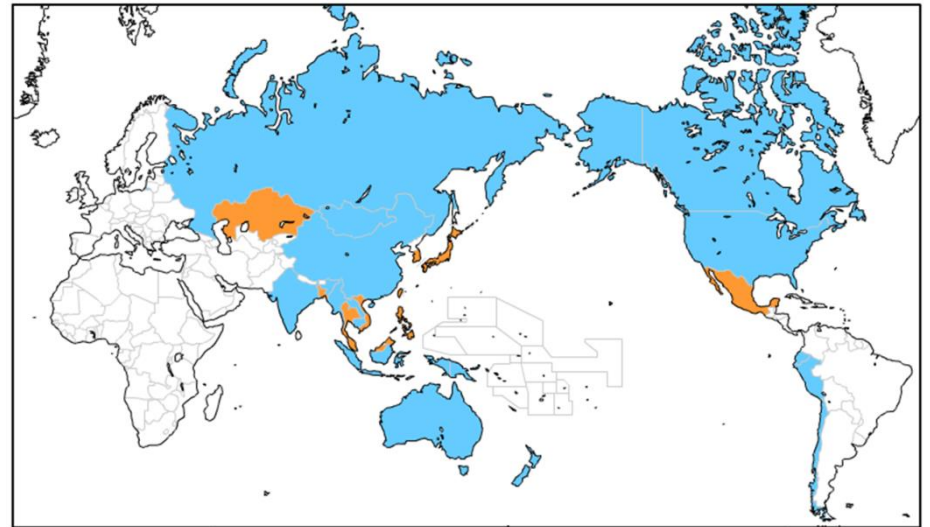


# Eligible countries / territories

Currently comprises 35 eligible countries/territories, and some 570 universities.

All accredited public and private universities in following countries / territories can participate in the UMAP Exchange Program. Other countries can also join UMAP with the approval of the governing authority of UMAP, the UMAP Board.

Australia / Bangladesh / Brunei /  
Cambodia / Canada / Chile / People's  
Republic of China / Ecuador / Fiji / Guam  
/ Hong Kong / India / Indonesia / Japan /  
Kazakhstan / Republic of Korea / Laos /  
Macao / Malaysia / Mexico / Mongolia /  
Myanmar / New Zealand / Papua New  
Guinea / Peru / Philippines / Reunion  
Island / Russia / Samoa / Singapore /  
Taiwan / Thailand / Timor-Leste / USA /  
Vietnam



\*Full member countries are painted in orange, eligible countries are painted in blue.

# UMAP Chairs and Int'l Secretariats

## UMAP Chair

<u>1998</u>	<u>Thailand</u>
1999-2000	Korea
2001-2002	Australia
2003-2004	Malaysia
2005-2006	Taiwan
2007-2008	Mexico
2009-2010	Japan
2011-2012	Philippines
2013-2014	Japan
2015-2016	Malaysia

## UMAP IS

1998-2005	Japan
<u>2006-2010</u>	<u>Thailand</u>
2011-2015	Taiwan
2016-2020	Japan
	<u>(Toyo University)</u>

# Merit of Joining UMAP

- Universities can participate in the exchange programs without separately signing bilateral agreements with other universities.
- Students will have broader opportunities to study abroad and learn from other cultures.
- Credit can be transferred through the UMAP Credit Transfer Scheme (UCTS).
- Tuition at the host university is waived in Program A.

# ◆The 2nd UMAP Board Meeting 2016

Date: September 22, 2016

Venue: Toyo University, Hakusan Campus

Participants: Approx. 60 people



# ◆UMAP 25<sup>th</sup> Anniversary Symposium

Date: September 23, 2016

Venue: Toyo University, Hakusan Campus

Participants: Approx. 200 people



# New Web site and UCTS Users' Guide



[www.umap.org](http://www.umap.org)

## 5. UCTS Credit Conversion with Other Parts of the World.

The following table illustrates a recommended conversion of UCTS with various national and regional credit systems:

A comparative credit transfer system.

Country/Region	UCTS	Asia	USA	Europe (ECTS)*	UK (CATS)**
Credit Conversion	1 UCTS	1 credit	1 credit	1.5 ECTS	3 credits
Student Workload	38-48 hrs.	38-48 hrs.	45 hrs.	37.5-45 hrs.	Converted from ECTS
Teaching Hours	13-16 hrs.	13-16 hrs.	15 hrs.	-----	-----





# JASSO-UMAP Study Abroad Scholarship

◆ Starting April 2017

- **Eligibility : Students who participating UMAP program (inbound and outbound Japan)**
- **Scholarship:**
  - 1) **Monthly 80,000 JPY (for 1-2 semester)**
  - 2) **80,000 JPY for short program**



# Thank you very much!

For more information, please visit our website.

[www.umap.org](http://www.umap.org)



University Mobility in Asia and the Pacific  
– Promoting student mobility in the region –



**Shingo ASHIZAWA**, *Deputy Secretary General*  
UMAP International Secretariat

**Toyo University**  
Professor, Faculty of Regional Development Studies  
5-28-20 Hakusan, Bunkyo, Tokyo 112-8606  
TEL : 81-(0)3-3945-8018 email : ashizawa@toyo.jp