

NSSE's Global Learning module assesses student experiences and coursework that emphasize global affairs, world cultures, nationalities, religions, and other international topics. The module is appended to and complements items on the core NSSE questionnaire about student experiences with people from different backgrounds, course emphasis on integrative and reflective learning, and participation in study abroad. It is designed to complement the American Council on Education's 2016 edition of the Mapping Internationalization on U.S. Campuses survey. Launched in 2016, the Global Learning module replaces the retired Global Perspectives module.

1. How much does your institution emphasize the following?

	<i>Very much</i>	<i>Quite a bit</i>	<i>Some</i>	<i>Very little</i>
a. Providing courses that focus on global and international topics	<input type="radio"/>	<input type="radio"/>	<input type="radio"/>	<input type="radio"/>
b. Providing activities and experiences (speakers, events) that focus on global and international topics	<input type="radio"/>	<input type="radio"/>	<input type="radio"/>	<input type="radio"/>

2. Which of the following have you done or do you plan to do before you graduate?

	<i>Done or in progress</i>	<i>Plan to do</i>	<i>Do not plan to do</i>	<i>Have not decided</i>
a. Complete a course that focuses on global trends or issues (human rights, international relations, world health, climate, etc.)	<input type="radio"/>	<input type="radio"/>	<input type="radio"/>	<input type="radio"/>
b. Complete a course that focuses on perspectives, issues, or events from other countries or regions	<input type="radio"/>	<input type="radio"/>	<input type="radio"/>	<input type="radio"/>
c. Complete a course that focuses on religions or cultural groups other than your own	<input type="radio"/>	<input type="radio"/>	<input type="radio"/>	<input type="radio"/>

3. During the current school year, how much has your coursework encouraged you to do the following?

	<i>Very much</i>	<i>Quite a bit</i>	<i>Some</i>	<i>Very little</i>
a. Understand the viewpoints, values, or customs of different world cultures, nationalities, and religions	<input type="radio"/>	<input type="radio"/>	<input type="radio"/>	<input type="radio"/>
b. Develop skills for interacting effectively and appropriately with those from different world cultures, nationalities, and religions	<input type="radio"/>	<input type="radio"/>	<input type="radio"/>	<input type="radio"/>

4. During the current school year, about how often have you done the following?

	<i>Very often</i>	<i>Often</i>	<i>Sometimes</i>	<i>Never</i>
a. Discussed international or global topics and issues with others	<input type="radio"/>	<input type="radio"/>	<input type="radio"/>	<input type="radio"/>
b. Talked about international opportunities (study abroad, international internship, Model UN, field study or research abroad, etc.) with a faculty member or advisor	<input type="radio"/>	<input type="radio"/>	<input type="radio"/>	<input type="radio"/>
c. Attended events or activities that promoted the understanding of different world cultures, nationalities, and religions	<input type="radio"/>	<input type="radio"/>	<input type="radio"/>	<input type="radio"/>
d. Worked on out-of-class activities (campus events, committees, student groups, etc.) with an international or global focus	<input type="radio"/>	<input type="radio"/>	<input type="radio"/>	<input type="radio"/>
e. Participated in a program that pairs domestic and international students (language partners, buddy program, etc.)	<input type="radio"/>	<input type="radio"/>	<input type="radio"/>	<input type="radio"/>

5a. During the current school year, have you looked for information about global education programs and opportunities (study abroad, international internships, international field studies or research, volunteering abroad, etc.)? YES or NO.

[only if "Yes"] **5b. Which of the following were your sources of information? (Select all that apply.)**

- | | | |
|--|---|---|
| <input type="checkbox"/> Study abroad or intr'l studies office | <input type="checkbox"/> Attendance at international programs/events | <input type="checkbox"/> Family members |
| <input type="checkbox"/> Major/academic department office | <input type="checkbox"/> Website, newsletter, catalog, or other published sources | <input type="checkbox"/> Other, please specify: _____ |
| <input type="checkbox"/> Career office | <input type="checkbox"/> Friends or other students | |
| <input type="checkbox"/> Academic advisor | | |
| <input type="checkbox"/> Faculty member | | |

6. How much has your experience at this institution contributed to your knowledge, skills, and personal development in the following areas?

	<i>Very much</i>	<i>Quite a bit</i>	<i>Some</i>	<i>Very little</i>
a. Being informed about current international and global issues	<input type="radio"/>	<input type="radio"/>	<input type="radio"/>	<input type="radio"/>
b. Speaking a second language	<input type="radio"/>	<input type="radio"/>	<input type="radio"/>	<input type="radio"/>
c. Seeking international or global opportunities out of your comfort zone	<input type="radio"/>	<input type="radio"/>	<input type="radio"/>	<input type="radio"/>
d. Understanding how your actions affect global communities	<input type="radio"/>	<input type="radio"/>	<input type="radio"/>	<input type="radio"/>
e. Preparing for life and work in an increasingly globalized era	<input type="radio"/>	<input type="radio"/>	<input type="radio"/>	<input type="radio"/>
f. Encouraging your sense of global responsibility	<input type="radio"/>	<input type="radio"/>	<input type="radio"/>	<input type="radio"/>

7. Since enrolling at your current institution, have you lived with students from a country other than your own (exclude study abroad and other programs in other countries)?

Yes No

Mapping and NSSE: Relating Institutional Internationalization Efforts and Student Global Learning




Jillian Kinzie
Indiana University, National Survey of Student Engagement
Robin Helms & Lucia Brajkovic
American Council on Education's Center for Internationalization and Global Engagement

ACE American Council on Education
NSSE National Survey of Student Engagement

Internationalization and Global Learning
A Joint Project by the American Council on Education and the National Survey of Student Engagement

Internationalization Efforts and Student Global Learning

What we're exploring now:

NSSE & Mapping

3. What is the relationship between campus internationalization efforts and students' global learning experiences and gains?



ACE American Council on Education
NSSE National Survey of Student Engagement

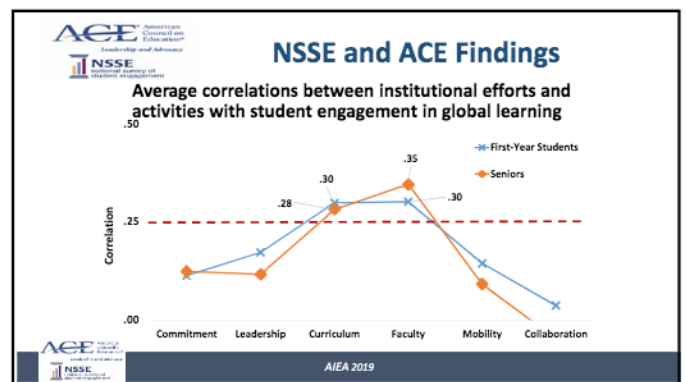
AIEA 2019

Two data sources to explore these questions:




ACE American Council on Education
NSSE National Survey of Student Engagement

AIEA 2019



NSSE and ACE Findings

1. Articulated Institutional Commitment	-
2. Administrative Leadership, Structure, & Staffing	-
3. Curriculum, Co-curriculum, & Learning Outcomes	+
4. Faculty Policies & Practices	+
5. Student Mobility	--
6. Collaboration & Partnerships	--

ACE American Council on Education
NSSE National Survey of Student Engagement

AIEA 2019

ACE & NSSE

Top 10 vs. Low 10

Students at **Top 10 institutions** (Curriculum & Faculty ACE scores) significantly more engaged with global learning activities than peers at **Low 10 institutions**:

- institution emphasized courses & activities that focus on global learning (1a & 1b)
- plan/complete a course that focuses on global trends/issues (2b)
- more engaged in discussions & activities (4a - 4e)
- more likely to seek information about global ed programs (5)
- greater global learning gains on all items (6a - 6f)

Students at **Top 10 Curriculum** schools much more likely to live with students from another country (7) (25% vs 12%)

ACE American Council on Education
NSSE National Survey of Student Engagement

AIEA 2019