

Internationalization of Higher Education in Japan



Overview of Government Policy and Initiatives in Japan

1. Plan for acceptance of international students

(1983) “100,000 International Students Plan”

(2008) “300,000 International Students Plan”

2. Promotion of internationalization of universities

(2009~2013) “Global 30” project

(2014~) “Top Global University Project”

3. Promotion of regional student mobility as government initiatives

(2011~) “Inter-University Exchange Project”

4. Growing needs for global human resources

(2012~) “Go Global Japan (GGJ)” project

Top Global University Project (2014-2023)

FY 2018 Draft Budget:
4.0 billion yen

Through carrying out comprehensive university reform and internationalization, this project aims to enhance the international compatibility and competitiveness of higher education in Japan.

MEXT selected 37 top global universities, and allocates 10-year long special budget for supporting their university reform towards the internationalization. 37 universities are categorized into two types.

- Top Type: 13 universities, aiming to rank in the top 100 in the world
- Global Traction Type: 24 universities, pioneering trial runs based on their performance

Key Performance Indicators (KPIs) in the Top Global University Project

1. Internationalization

- 1) Ratio of intern'l full-time faculty staff and full-time faculty staff who have received their degrees at a foreign univ
- 2) Ratio of intern'l students
- 3) Ratio of JPN students who experienced study abroad
- 4) Ratio of JPN students studying abroad under inter-university agreements
- 5) Ratio of classes conducted in foreign languages
- 6) Ratio of students enrolled in degree programs in foreign languages
- 7) Ratio of students who meet foreign language standards
- 8) Ratio of syllabus translated in English
- 9) Ratio of JPN students who stay in int'l dormitories
- 10) Flexible academic calendar

2. Governance

- 1) Ratio of annual salary system
- 2) Ratio of tenure track system
- 3) Upgrading of administrative staff (ratio of administrative staff who meet foreign language standards)

3. Educational Reform

- 1) Ratio of course numbering
- 2) Ratio of use of external test such as TOEFL in entrance examination
- 3) Ratio of classes where evaluation by students is conducted



Selected universities for “Top Global University Project”

Legend

framed: Top Type none: Global Traction Type
 Black: National Blue: Public Red: Private

Kinki

- Kyoto U
- Osaka U
- Kyoto Institute of Technology
- Nara Institute of Science and Technology
- Ritsumeikan U
- Kwansei Gakuin U

Tohoku

- Tohoku U
- Akita International U
- U of Aizu

Hokkaido

- Hokkaido U

Kanto

- U of Tsukuba
- U of Tokyo
- Tokyo Medical and Dental U
- Tokyo Institute of Technology
- Keio U
- Waseda U
- Chiba U
- Tokyo U of Foreign Studies
- Tokyo U of the Art
- International Christian U
- Shibaura Institute of Technology
- Sophia U
- Toyo U
- Hosei U
- Meiji U
- Rikkyo U
- Soka U

Kyushu, Okinawa

- Kyushu U
- Kumamoto U
- Ritsumeikan Asia Pacific U

Chugoku, Shikoku

- Hiroshima U
- Okayama U

Hokuriku, Koshinetsu, Tokai

- Nagoya U
- Kanazawa U
- Nagaoka U of Technology
- Toyohashi U of Technology
- International U of Japan

- Top Type :
13 universities
- Global Traction Type :
24 universities



MEXT

MINISTRY OF EDUCATION, CULTURE, SPORTS,
SCIENCE AND TECHNOLOGY-JAPAN

Please visit webpage of “Top Global University Project” and find more information about Japanese Universities (<https://tgu.mext.go.jp/en/index.html>)



Welcome to the
Top Global Universities with
unique specialist knowledge

Opening up the future 拓

As society becomes more diverse, greater flexibility and broader perspectives are needed. As a non-English speaking country, Japan offers many opportunities to learn and experience something unique and exciting. The Top Global Universities in Japan will help you broaden your horizons and open new doors.

Aiming Higher 挑

The 37 universities selected for this project offer their own distinctive programs. These Top Global Universities will help you achieve higher goals and maximize your potential.



Top Global University Project

Purpose of the Top Global University Project

Since 2014, the Japanese Ministry of Education, Culture, Sports, Science and Technology (MEXT) has been carrying out the Top Global University Project to provide prioritized support to those universities that are leading the internationalization of Japan's education by launching new programs to encourage and deepen interactions and partnerships with the world's top universities, reforming personnel and educational systems, enhancing educational systems to help students develop the ability to act globally and accelerating other globalization initiatives.



Outline of the Top Global University Project

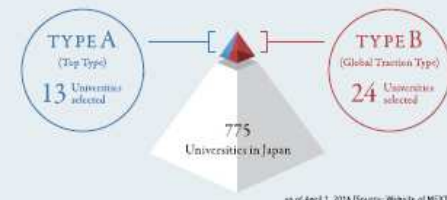
Under the Top Global University Project, 13 universities were selected as Type A (Top Type) universities that are conducting world-leading education and research and 24 universities were selected as Type B (Global Traction Type) universities that are leading the globalization of Japanese society. These 37 universities have been working hard on internationalization and university reform.

Type A (Top Type)

Leading universities that are conducting world-level education and research and have the potential to be ranked among the world's top 100 universities

Type B (Global Traction Type)

Universities that are leading the internationalization of Japanese society by launching innovative programs based on their track records



Main performance indicators set by the Top Global Universities

Goals relating to internationalization

- Increase the ratio of international students in the total student population
- Increase the ratio of students who experienced study abroad with credit earning in the total Japanese student population
- Increase the number of classes taught in foreign languages
- Increase the number of Japanese students living in international dormitories
- Introduce a flexible academic calendar (e.g. a quarter system on a university-wide basis) etc.

Goals relating to governance

- Encourage the introduction of an annual salary system
- Encourage the introduction of a tenure track system
- Capacity building of administrative staff (Increase the number of administrative staff who meet the standards of foreign languages) etc.

Goals relating to educational reform

- Actively introduce the course numbering system
- Introduce external examinations such as TOEFL® in undergraduate entrance examinations (Admission quota) etc.

Selected Universities

Type A (Top Type)

Hokkaido University / Tohoku University / University of Tsukuba / The University of Tokyo / Tokyo Medical and Dental University / Tokyo Institute of Technology / Nagoya University / Kyoto University / Osaka University / Hiroshima University / Kyushu University / Keio University / Waseda University

Type B (Global Traction Type)

Chiba University / Tokyo University of Foreign Studies / Tokyo University of the Arts / Nagasaki University of Technology / Kanazawa University / Toyohashi University of Technology / Kyoto Institute of Technology / Nara Institute of Science and Technology (NAIST) / Okayama University / Kumamoto University / Akita International University / The University of Aizu / International Christian University / Shizuoka Institute of Technology / Sophia University / Toyo University / Hosei University / Meiji University / Rikkyo University / Soka University / International University of Japan / Ritsumeikan University / Kwansei Gakuin University / Ritsumeikan Asia Pacific University



Learn more about the Top Global Universities at the official website!

POINT 1
Up-to-date information on the 37 Top Global Universities is available.

POINT 2
You can see what your campus life will be like at the Top Global Universities and listen to the voices of graduates of these universities who play leading roles in the international arena.

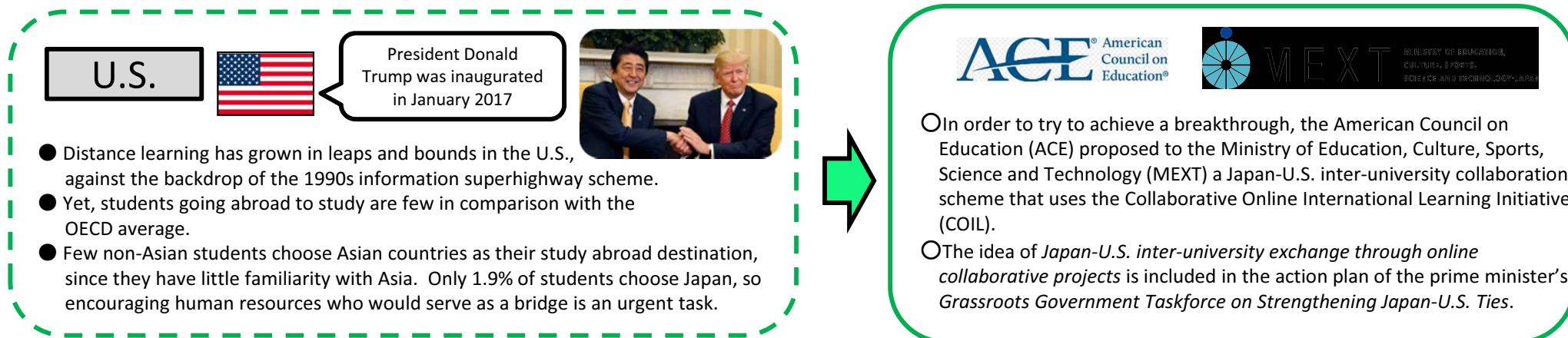
Top Global University Project
[URL] <https://tgu.mext.go.jp/en/>



, SPORTS,

【Background】

- The ability to identify the problem in the event of an unforeseen emergency and to collaborate with people from various cultural backgrounds to solve the problem would be necessary to survive and contribute in an era of rapid globalization and progress in science, telecommunications, and other technologies.
- A lack of employees capable of succeeding on a global stage is recognized as a major management problem for businesses, according to a Japan Business Federation (Keidanren) study. Those who can succeed on the global stage need understanding and tolerance to diversity, and students are expected to have identity, communication skills by the time they graduate university. There is also expectation that universities will promote student exchange in both directions and switch to interactive classes that encourage students to be autonomous and proactive.

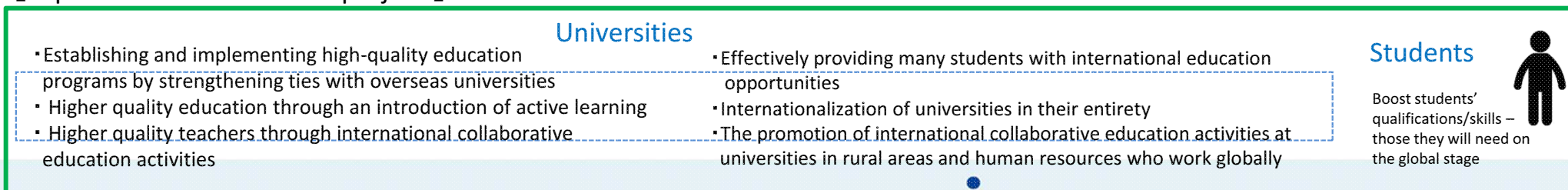


【Project overview】

- Support inter-university exchange among the universities of Japan and the U.S. based on the COIL* method
 - ※COIL(Collaborative Online International Learning) is an international interactive education method utilizing online communication.
- Select and support COIL platform university which strategically inform the model case of this project and match up universities trying to introduce/implement the COIL program

The COIL method, which applies online education methods to international inter-university exchange, can provide collaborative learning opportunities with overseas students who speak different languages and have different cultural backgrounds in one's own country.

【Expected results from this project】



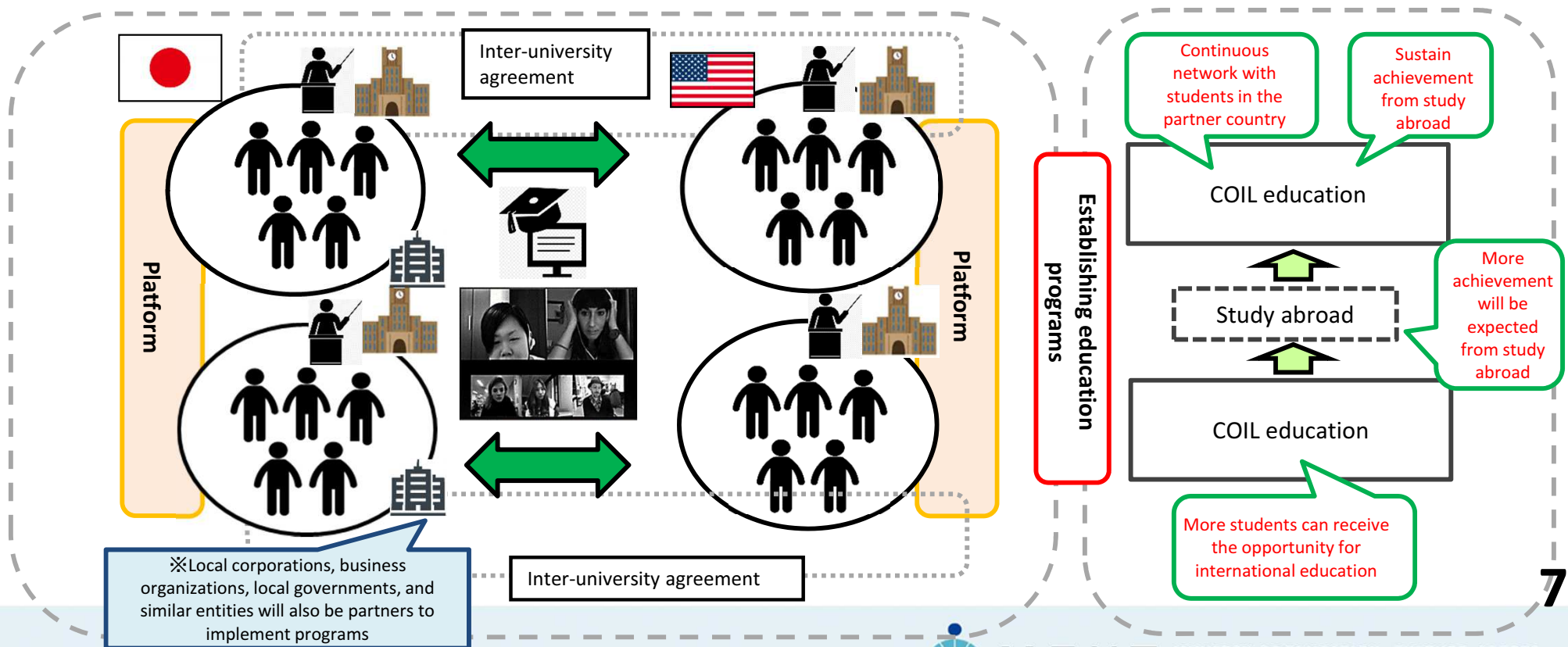
OCOIL (Collaborative Online International Learning)

What is COIL?

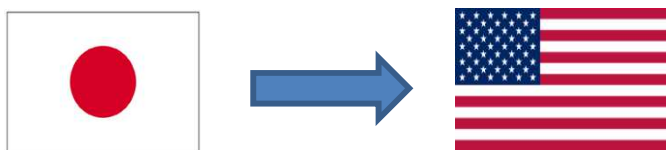
Collaborative
Online
International
Learning

COIL is a new practical application of international and interactive education, applying the advance of online education methods to international inter-university exchange. Students can stay in their home country/university and learn together with students at overseas universities through the use of information and communications technology (ICT) to hook up virtually on programs in many different disciplines.

This program will support universities in Japan that pioneer international education programs with quality assurance, including credit recognition and grades assessment, through the use of COIL education with overseas partner universities.

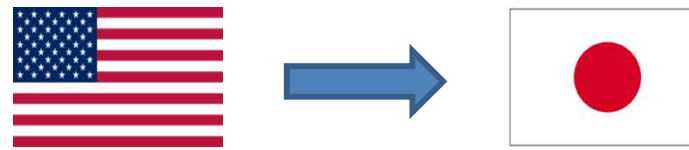


Trend of Student Exchange between Japan and U.S.



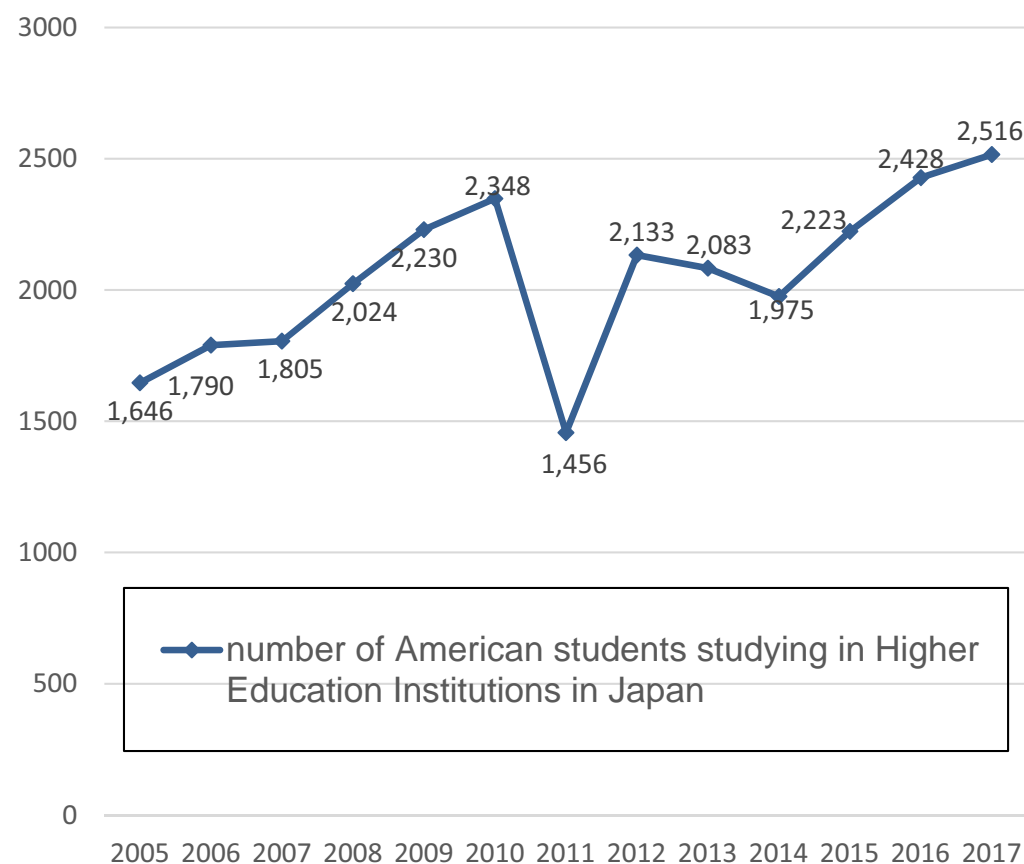
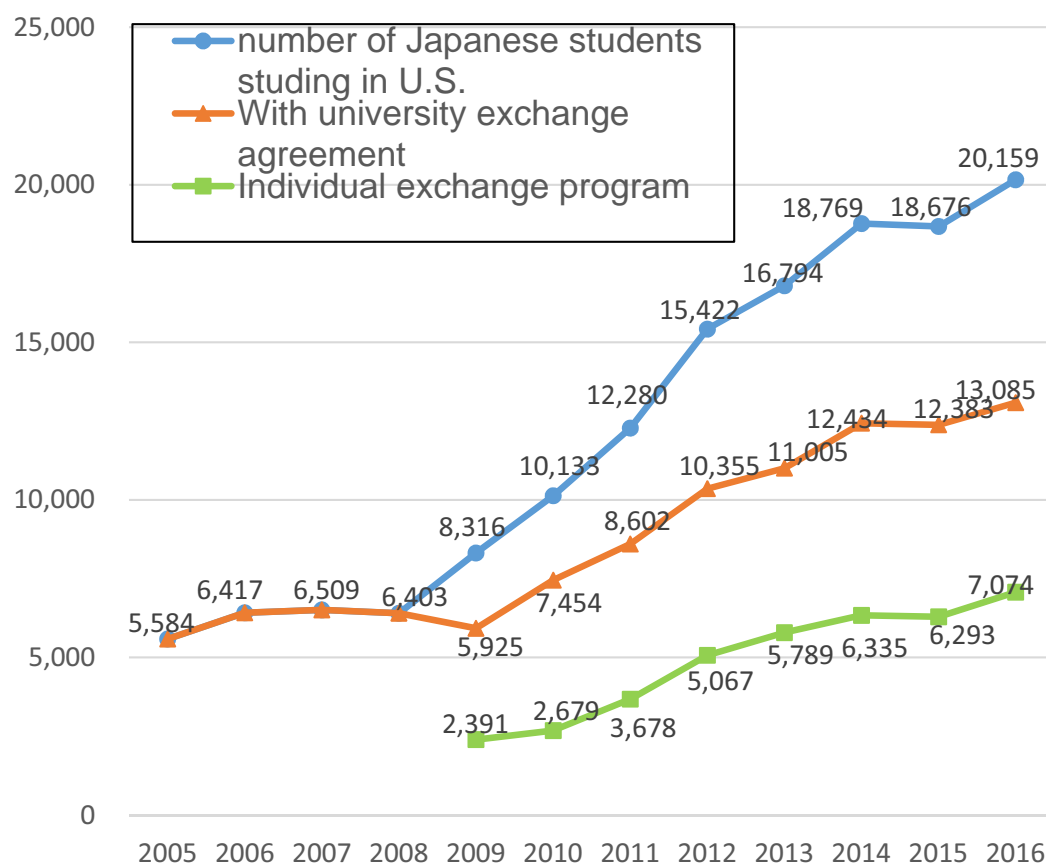
2016

20,159



2017

2,516



Source: Japan Student Services Organization (JASSO)

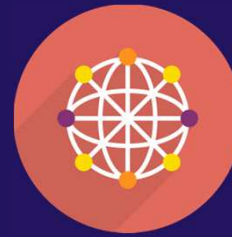
CULCON and TeamUp:

enhancing educational partnerships

February 20,
2018

Pamela Fields





- ❑ Binational public/private advisory panel to the U.S. and Japanese governments serves to elevate and strengthen the vital cultural and educational foundations of the U.S.-Japan relationship
- ❑ US and Japan Panels both collaborate and work independently to encourage greater exchange and collaboration
- ❑ Working group/task force structure addresses challenges and seeks solutions
- ❑ Education Task Force examined U.S.-Japan student mobility; issued report (2013) to both governments with 37 recommendations



Examples of CULCON-Inspired Initiatives*

*major projects only displayed here

- U.S.-Japan Bridging Foundation, 501(c)3
- Scholarships for approximately 100 U.S. students per year to study in Japan since 1998
- Total funds leveraged: approx. \$8.5 million



U.S. CULCON Panel



- USJETAA, 501(c)3, supports JET alumni networks and raises awareness of U.S.-Japan opportunities.
- Funded by CGP, CLAIR, MOFA, JUSFC et al.
- Total funds leverages since 2013: approx. \$500,000

- The North American Coordinating Committee on Library Resources (NCC), supports Japanese Studies and advocates for access to Japanese materials (collections and resources).
- Online Guide to Research Access to Japanese Collections and Resources created at CULCON recommendation
- Funded by Japan Foundation Center for Global Partnership (CGP), Toshiba International Foundation and JUSFC
- Total funds leveraged: approx. \$900,000



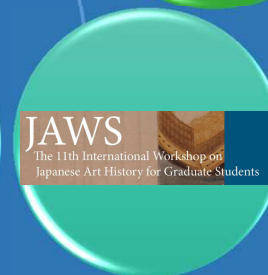
- Bridging Project Clearinghouse, housed at Association of American Teachers of Japanese (AATJ), established at CULCON recommendation in 1997 to increase American student mobility to Japan
- Funded by JUSFC, AATJ, U of Colorado
- Total funds leveraged: approx. \$1.5 million

- TeamUp is a campaign to increase U.S.-Japan student mobility through educational partnerships since 2104
- Online resources, familiarization tour, micro-grant programs
- Funded by the U.S. Embassy Tokyo
- Total funds leveraged: approx. \$500,000



- Arts Japan 2020 is an online initiative (established 2017) to showcase Japan-themed cultural programs in the U.S. with articles, podcasts, interviews and social media
- Funded by JUSFC; pending funding proposals to NEA and JUSFC
- Total funds leveraged: approx. \$60,000

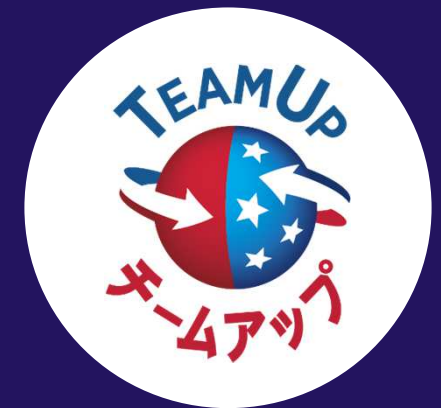
- U.S.-Japan Clearinghouse is an online community for exchange of curators, scholars, conservators, and advanced students of Japanese art; at Minneapolis Institute of Art
- Bilingual clearinghouse for Japanese art of museums; current and upcoming exhibitions, conferences, symposia, funding, employment.
- Funded by Gale Asian Art Initiative
- Total funds leveraged: approx. \$600,000



- International Workshop on Japanese Art History for Graduate Students (JAWS)
- CULCON ADC reinstated workshops after suspension for lack of funding
- Funded by Japanese Agency for Cultural Affairs, JUSFC, Harvard University, among others
- Total funds leveraged: approx. \$450,000

TeamUp Campaign

Our Vision: Dynamic Partnerships



“TeamUp has been a valuable resource as we work to develop closer ties to Japanese universities.

By reminding us of the various elements that go into a strong partnership and providing us with powerful tools to develop those strategic collaborations, TeamUp and its Road Map have empowered us to imagine dynamic, new pathways for greater exchange of people and ideas between our institution and those in Japan.

That benefits our respective institutions as well as the ongoing critical U.S. and Japanese relationship.

We are most grateful for the work our colleagues on both sides of the Pacific have done in this initiative.”

- *Michael Pippenger, Vice President and Associate Provost for Internationalization, University of Notre Dame*



TeamUp: Forging New And Innovative Agreements



APPROXIMATELY

20%

of all colleges and universities in Japan and the U.S. have already been involved in a TeamUp activity

TeamUp is a powerful campaign to create and expand vibrant, innovative agreements between U.S. and Japanese universities to increase student mobility and enhance learning.

TeamUp helps schools expand current partnerships and form new ones that:

- Reach students who wouldn't typically study abroad
- Increase diversity by adding more international students
- Enhance student learning through new methods
- Integrate experiential learning abroad with on-campus curriculum
- Expand faculty's capacity to teach and research abroad



TeamUp Creates And Expands Vibrant Agreements



TEAMUP'S MISSION

Cultivate new, innovative
U.S.-Japan educational
partnerships

Help reach the goal of
doubling U.S.-Japan
student mobility by 2020

Create a diverse next generation
of stewards of the
U.S.-Japan relationship

Build a globally talented workforce

TeamUp Awareness Drive

Convening influential stakeholders,
speaking at key conferences, and
hosting networking opportunities to
lay the groundwork to create and
expand educational partnerships.

TeamUp RoadMap

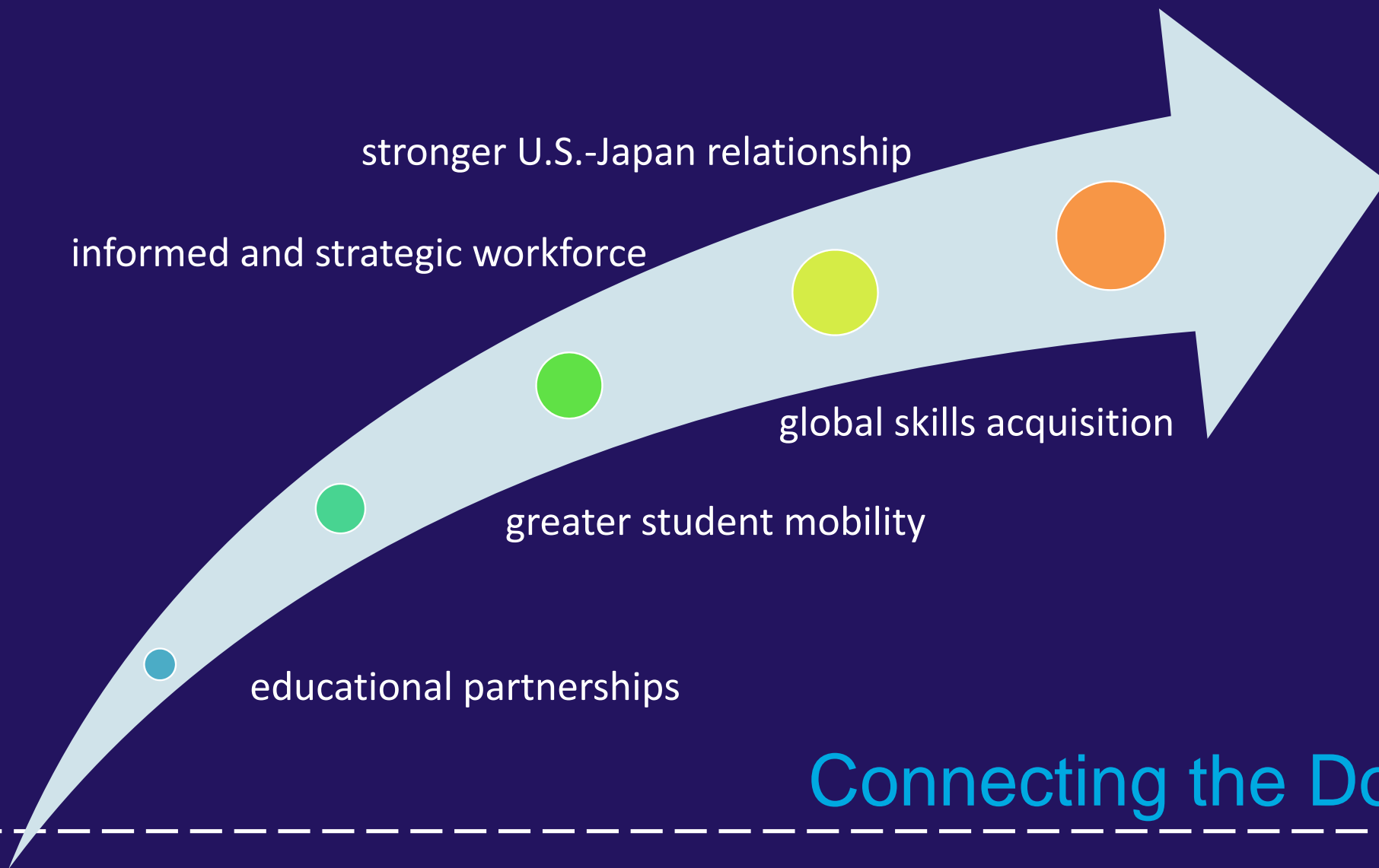
A comprehensive online resource,
written by experts in the field, to lead
U.S. and Japanese institutions
through the process of creating and
expanding partnerships.

TeamedUp Familiarization Tour

An opportunity for U.S. institutions,
for whom contacts and resources are
a challenge, to travel to Japan to
meet potential Japanese partners;
led and funded by TeamUp.

TeamUp Micro-Grants

An opportunity for U.S. institutions to
design an individualized program to
travel to Japan to meet potential
Japanese partners; funded by
TeamUp.



Connecting the Dots



TeamUp Jumpstarts New Partnerships

**For each MOU already
signed, there are multiple
MOUs in progress!**



Spelman College + Fukuoka Women's University
University of Massachusetts Boston + Chukyo University
University of Massachusetts Boston + Hokkaido University

University of Massachusetts Boston + Ryukoku University
University of Massachusetts Boston + Sophia University

University of Massachusetts Boston + Soka University
University of Massachusetts Boston + Saitama University

University of Hawai'i Maui + University of the Ryukyus
University of Hawai'i Maui + Fukuyama City University

University of Hawai'i Maui + Onomichi City University
University of Hawai'i Maui + Yamaguchi Prefectural University

Monroe Community College + Akita International University

Monroe Community College + Yamanashi Gakuin University

University of New Hampshire + Kanto Gakuin University

Chatham University + Toyo University
Texas Tech University + Toyo University

Texas Tech University + Kindai University
Texas Tech University + Aoyama Gakuin University

University of Oregon + Temple University - Tokyo

University of Oregon + Hitotsubashi University

University of Texas at San Antonio + Waseda University

University of California, Berkeley + Tsukuba University

TeamUp Strengthens Existing Partnerships



Columbia University + Waseda University
Columbia University + Doshisha University
University of California, Berkeley + Meiji University
Notre Dame University + Keio University
Notre Dame University + Sophia University
University of New Hampshire + Waseda University
University of Oregon + Meiji University
University of Oregon + Waseda University
University of Oregon + Akita International University

UC Education Abroad Program + University of Tokyo
UC Education Abroad Program + Hitotsubashi University
UC Education Abroad Program + International Christian University
University of Texas, San Antonio + Kumamoto University
University of Texas, San Antonio + Kyoto University of Foreign Studies

People-To-People Connections Make All The Difference

The Situation

University of Hawai'i Maui College sought to rekindle their international student program after numbers began to decline.



Community College:
University of Hawai'i Maui
College
4,400 day and night students



Dr. Debra Nakama

Vice Chancellor for Student Affairs

Unique focus in cybersecurity, STEM, and increasing college matriculation rates in underserved populations.



Dr. Lui Hokoana

Chancellor and CEO

Secured funding that led to significant growth in enrollment, access to financial aid, and service to underrepresented groups.

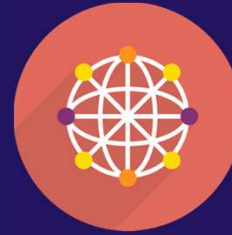
People-To-People Connections Make All The Difference

TeamUp's Actions

TeamUp selected Dr. Nakama to participate in the TeamedUp Familiarization Tour. Dr. Hokoana asked to accompany the tour – and paid his own way.

In Tokyo, Fukuoka and Okinawa, TeamUp introduced the participants to administrators, faculty and students at 12 potential partner colleges and universities, as well as Ambassador Kennedy and her staff at the U.S. Embassy Tokyo and the Consul General in Okinawa.

TeamUp also suggested Dr. Nakama look through the RoadMap for a partner – preferably one that was located in a sister city.



The Outcome

The TeamedUp Familiarization tour enabled faster, deeper connections on both sides. Typically, partnerships require many meetings, trips and sometimes years to establish. Within two months, Maui College signed an MOU with the University of the Ryukyus. Additional MOUs in the pipeline include Fukuyama City University, Okinawa International University, Fukuyama Municipal High School and Yamaguchi Prefectural University.

“Perhaps the most inspiring example of the program’s impact can be found in the deepening relationship between University of Hawai’i Maui College and the University of the Ryukyus. Dr. Nakama has already returned to Okinawa for a formal signing ceremony with Dr. Kaori Kinjo at the University of the Ryukyus.”

- Ms. Angela Shaeffer, Senior Director, Cultural Vistas

TeamUp Fosters The Relationships Needed For Agreements



20%

Approximately 20% of all colleges and universities in Japan and the United States have already been involved in a TeamUp activity

The TeamUp Roadmap Facilitates Partnerships

NEARLY

8,500 PEOPLE

—the majority of whom are based in Japan—have visited our RoadMap

THERE ARE

45

active requests to partner posted by institutions in Japan

12

active requests to partner posted by institutions in the U.S.

The TeamedUp Familiarization Tour Involved More Than 175 Individuals



7 representatives of 6 U.S. institutions visited 12 Japanese universities to meet with administrators, faculty, and students

Participants also met about

25 GOVERNMENT OFFICIALS

The TeamUp Micro-Grant Program Will Reach Approximately 750 More

Representatives of 10 U.S. institutions will visit a combined total of about

50 UNIVERSITIES

speaking with administrators, faculty, and students at each school



WASEDA University

Waseda University's Global Engagement Strategy

A.I.E.A. Annual Meeting
Washington, DC
Feb 20, 2018

Michael Mooney, Ph.D
University Professor
Special Advisor to the President
Waseda University

WHO WE ARE



About WASEDA University

- WASEDA University is a private university founded in 1882 by the 8th & 17th Prime Minister, Mr. Shigenobu OKUMA who always emphasized a “Resistance to authority” spirit.

<Facts as of 2017.5.1>

- 13 Undergraduate Schools / 21 Graduate Schools
- Student body: 50,221
- (Bachelor: 41,965 Master/Ph.D: 8,256)
- Faculty body: 5,498

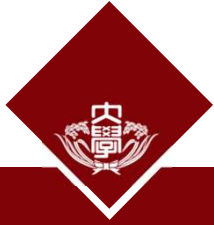


Shigenobu OKUMA



WASEDA UNIVERSITY





WASEDA UNIVERSITY

Waseda Alumni

610,000
all over the world

- 7 Prime Ministers of Japan
- Founders, CEOs of first-class companies (SONY, CASIO, SAMSUNG, UNIQLO, etc.)
- Top athletes and authors



Masaru IBUKA
Founder (SONY)



Kun-Hee Lee,
Chairman
(SAMSUNG)



Tadashi YANAI
CEO (UNIQLO)



Shizuka ARAKAWA,
Figure Skater
(Gold Medalist)



Haruki MURAKAMI
(Novelist)



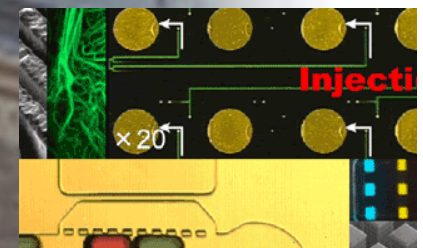
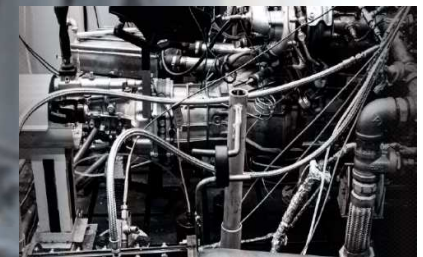
Academics and Research Institutes

10 Faculties (13 Undergraduate Schools / 21 Graduate Schools)

- Political Science and Economics
- Letters, Arts and Sciences
- Education and Integrated Arts and Sciences
- Science and Engineering
- International Research and Education
- Law
- Commerce
- Social Sciences
- Human Sciences
- Sport Sciences

9 Research institutes

- Future Robotics Organization
- Advanced Collaborative Research Organization for Smart Society
- Research Organization for Next Generation Vehicles
- Research Organization for Nano & Life Innovation
- Green Computing Systems Research Organization
- Organization for Islamic Area Studies
- Organization for Regional and Inter-regional studies
- Comprehensive Research Organization
- Organization for University Research Initiatives





Waseda University Today

Excellence in Education and Research

- **One of the top universities** receiving major government research grants
- **13** undergraduate and **21** graduate schools
- **28** libraries, **5.6** million books

Most International University in Japan

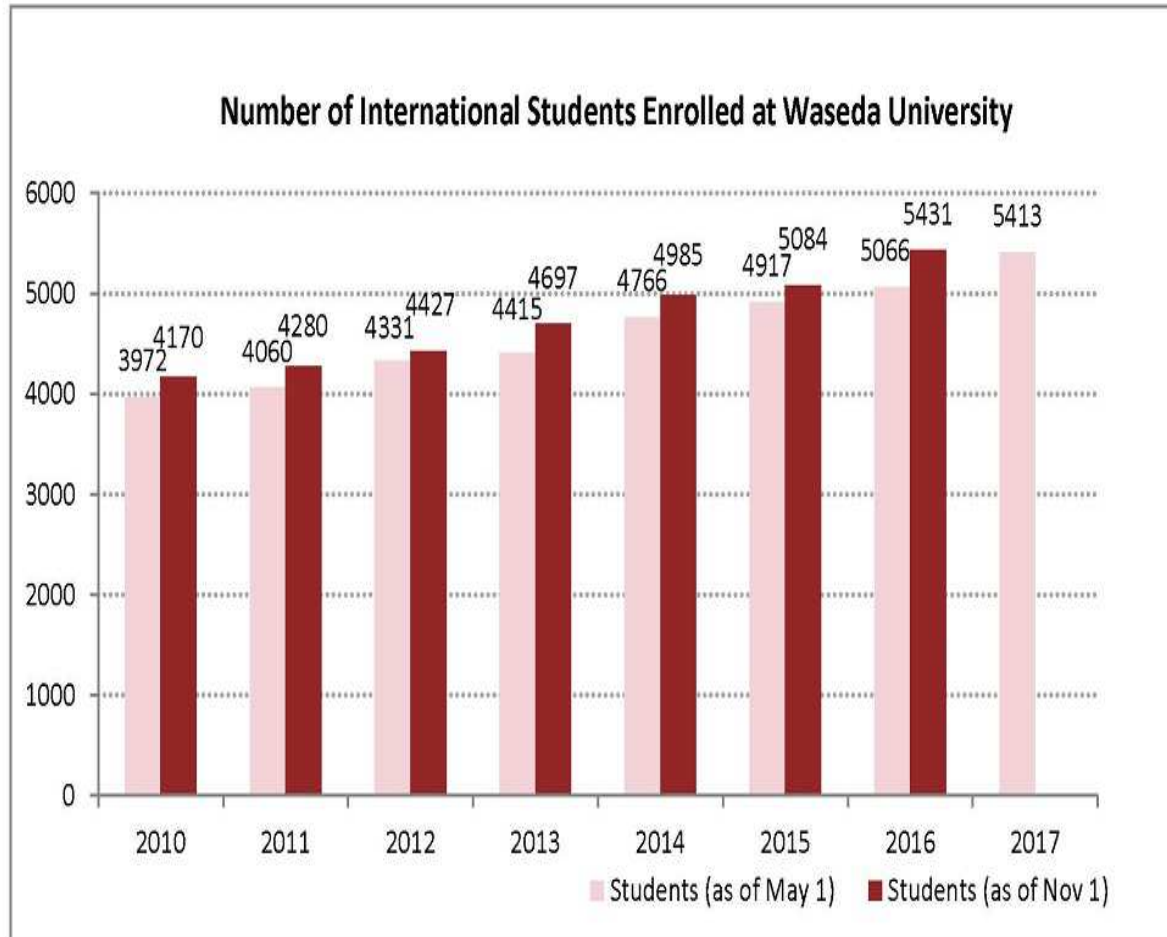
- Over **5,000** international students (of **50,000** students) – No.1 in Japan
- Over **700** partner institutions across **81** countries and **9** offices overseas
- **500** English-taught credited courses in **6** undergraduate and **12** graduate schools

Attractive and Dynamic

- **No.1.** in name recognition among high school students (Recruit Corp. survey)
- About **100,000** applications for undergraduate admissions per year
- **600,000** alumni worldwide, ranked **20th** in Global Executives (Alma Mater Index)



International Students in Waseda



Top 10 Countries and Regions

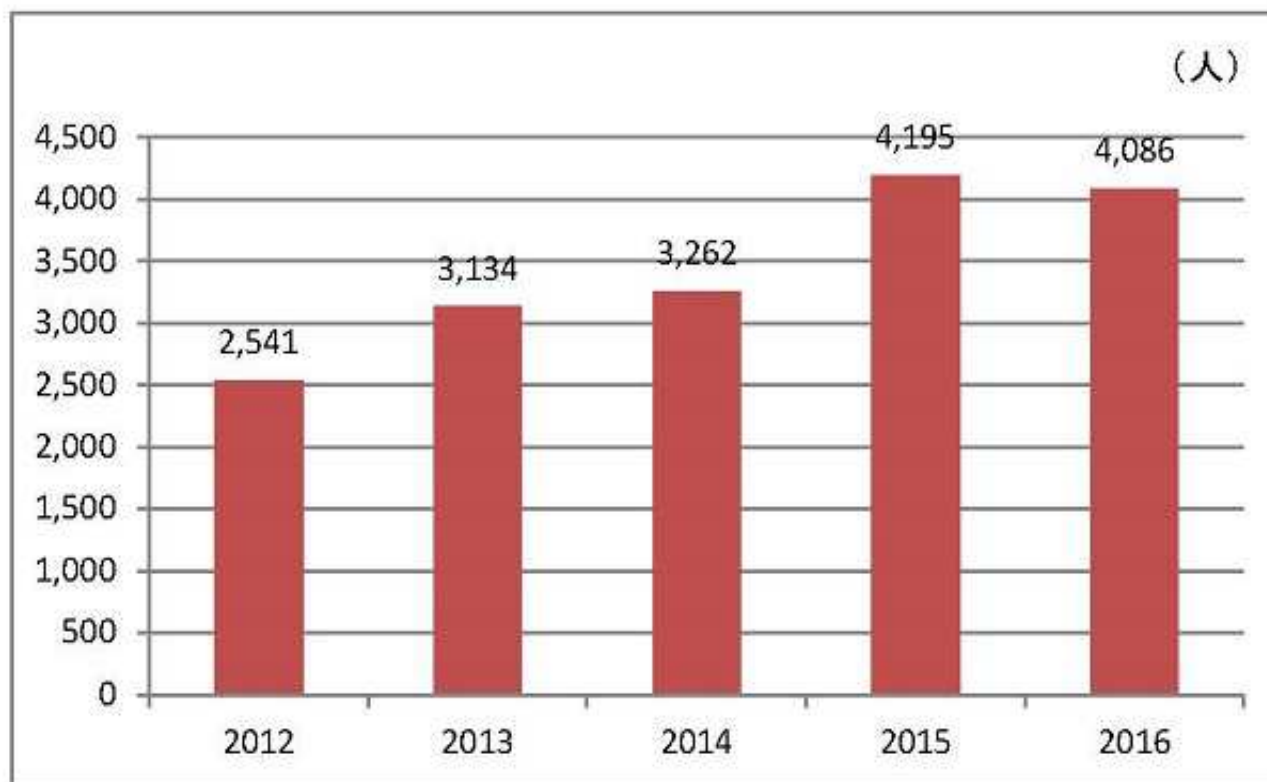
1	China	2,822
2	Korea	832
3	Taiwan	403
4	US	234
5	Indonesia	114
6	Thailand	103
7	Singapore	63
8	France	63
9	United Kingdom	60
10	Viet Nam	56
Others		663
Total		5,413

As of May 1, 2017



Waseda Students Going Abroad

Number of Waseda Students Going Abroad
(Both long- and short-term programs)



Top 10 Destinations
(2016 Long Term Programs)

1	US	409
2	UK	62
3	France	45
4	Germany	43
5	China	37
6	Canada	32
7	Sweden	31
8	Australia	30
9	Spain	25
	Others	487
Total		1,201

Overseas Offices & Global Alliances

WASEDA Brussels Office
***“HUB” for International Joint
 Research with European Partners***

Brussels (since 2016)

Beijing

Shanghai

Taipei

Bangkok

Singapore

Global Partnerships

Agreements	684
Partner Institutions	798
Countries	91

San Francisco

APRU
 Association of Pacific Rim Universities

IUA
 International Association of Universities

URA
 University Research Association

vi
 Venice International University

APAIE
 Asia-Pacific Association for International Education

OECD
 OECD Higher Education Programme

TEM
 Quantitative Techniques for Economics and Management

USJI
 U.S.-Japan Research Institute

WHERE WE ARE GOING



“Waseda Goes Global” Plan

For the future, we need comprehensive reforms

Current world status not enough: # 203 in 2018 QS World Univ. Ranking

We need to compete with top level universities in the world

Top Global University Project (TGUP)- The Globalization of Japanese Education and Research by MEXT

- Waseda is selected as one of the 13 top universities (Type A)
- MEXT plans to distribute 400 mil yen (3.5 mil USD) annually to each univ. for 10 years
- The goal is to increase international collaboration and to rank world top 100

“Waseda Goes Global” Campaign with “WASEDA VISION 150”

- It is the top priority initiative across campus
- President Kamata is traveling around the world to promote Waseda Goes Global plan as part of the larger strategic package, “Waseda Vision 150”



Waseda Vision 150 and Mission of the University

Mission

Independence of
Scholarship

Practical Application
of Scholarship

Fostering of Good
Citizens

Waseda Vision 150

For the 150th anniversary of the University's establishment in 2032

1. Students of the highest caliber and character who show promise in being able to contribute to the world
2. Research that will ultimately contribute to real world peace and happiness in human society
3. Graduates who will contribute to the public good as global leaders
4. Asia's premier "model university" adaptable to a changing world



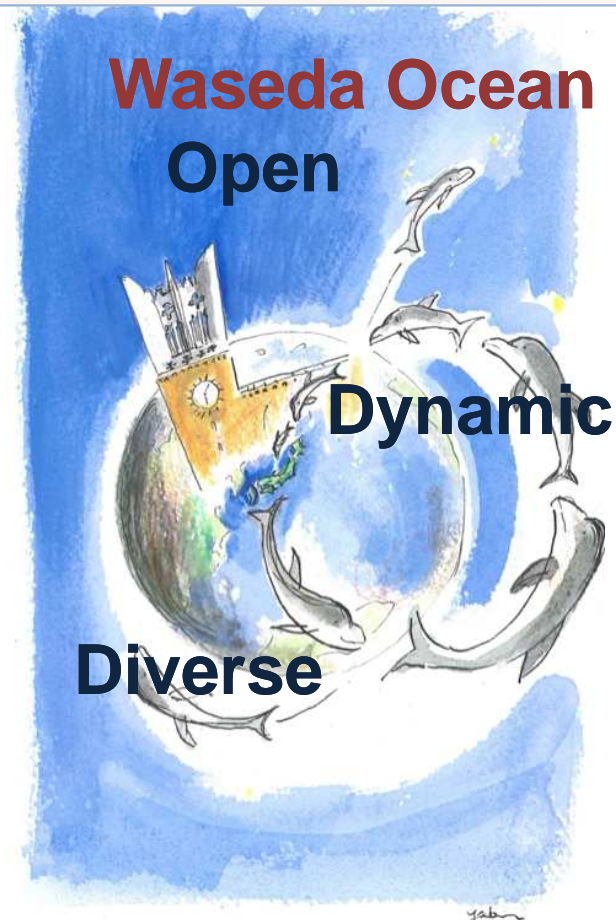
“Waseda Goes Global” Initiative

Top Global University Project by the Government of Japan

“Waseda Goes Global” – Plan to Build a Worldwide Academic Network that is Open, Dynamic and Diverse

1. Develop education and research programs to solve global challenges and innovate the future
2. Globalize education and research programs
3. Fundamentally reform the faculty recruitment system and university governance

- Produce 100,000 global leaders within 10 years
- Rank among the world's top 100 universities in 18 research areas within 10 years





Waseda Goes Global - Targets for 2023

Two Major Objectives for Building Worldwide Academic Network

1. Produce **100,000** Leaders with global perspective within 10 years
2. Rank among the **World's Top 100 Universities** in 18 areas in 10 years

Global Research

Incoming Visiting Researchers
(over 1-month stay)

810 ▶ **1,600**

Outgoing Visiting Researchers

179 ▶ **500**

Global Education

Students studying abroad

3,076 ▶ **10,650**

International Students

4,415 (8.4%) ▶ **9,165 (19.2 %)**

Strengthening Research Funds (for 2032)*

Outside Research Funds

8.9 billion yen ▶ **20 billion yen**

Donations

2.2 billion yen ▶ **10 billion yen**

Reform for Global Standards

International Faculty

760 (45.3%) ▶ **1,380 (75%)**

Faculty under Annual Salary Systems

99 (5.9%) ▶ **791 (43%)**

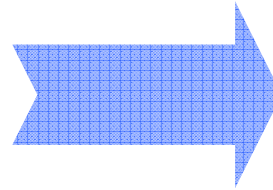
* The target set under Waseda Vision 150

Global Education



Enhancement of English Based Degree Programs

1 undergraduate & 4 graduate
programs (until 2008)



7 undergraduate & 13 graduate
programs

■ Undergraduate

- International Liberal Studies
- Political Science and Economics
- Social Sciences
- Culture, Media and Society (From 2017)
- Fundamental Science and Engineering
- Creative Science and Engineering
- Advanced Science and Engineering

■ Graduate

- Political Science
- Economics
- Commerce
- Fundamental Science and Engineering
- Creative Science and Engineering
- Advanced Science and Engineering
- Social Sciences
- Asia-Pacific Studies
- Sport Sciences
- International Culture and Communication Studies
- Information, Production and Systems
- Environment and Energy Engineering
- Waseda Business School



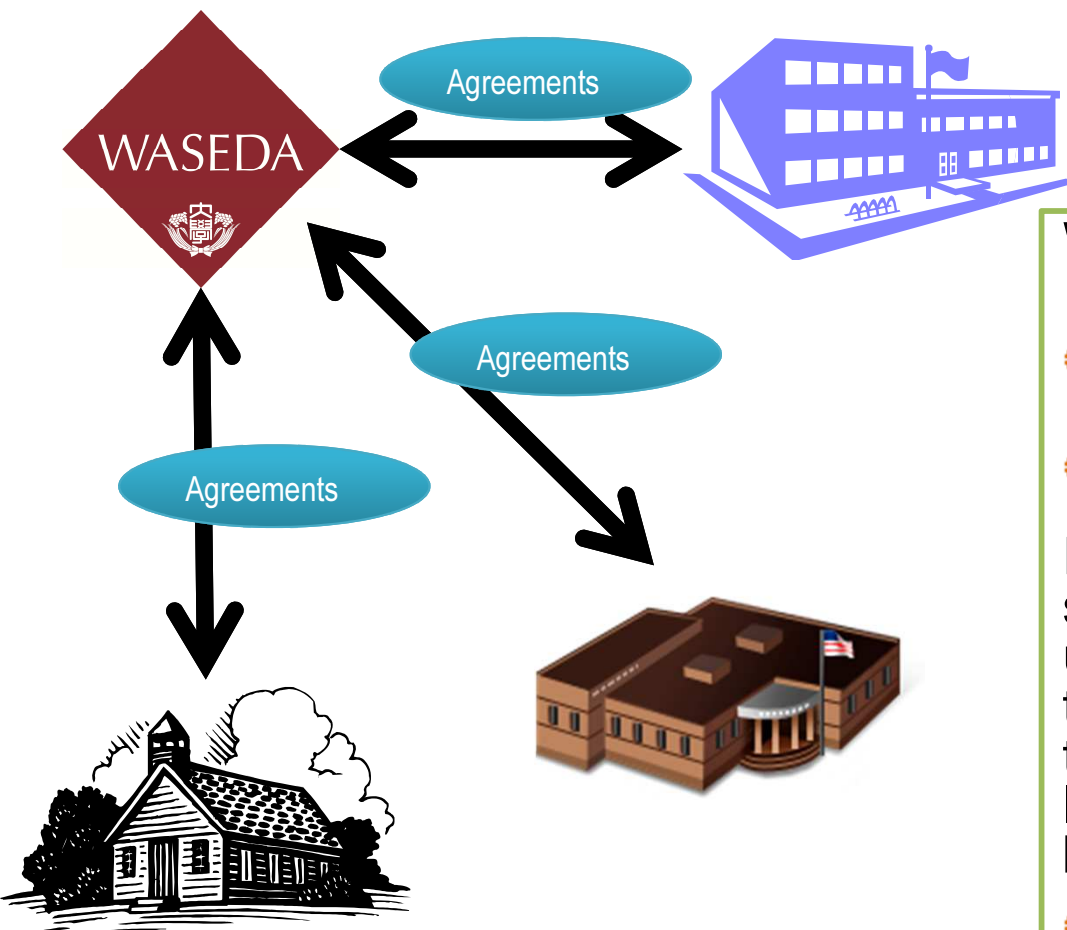
Waseda Students Going Abroad

Number of Students by Programs

		2012	2013	2014	2015	2016
Long Term	Exchange Programs	314	423	559	578	529
	Customized Study Abroad Language Focused (CS-L)	430	473	460	417	360
	Customized Study Abroad Regular Academic (CS-R)	120	131	77	90	82
	Double Degree Programs	32	37	27	24	20
	Privately Funded Programs	153	148	328	372	210
	Sub Total	1,049	1,212	1,451	1,481	1,201
Short Term	CIE Programs	806	837	820	644	636
	Non CIE Programs	—	247	110	1,371	1,476
	Seminars and Field Trips	686	838	881	699	773
	Sub Total	1,492	1,922	1,811	2,714	2,885
Total		2,541	3,134	3,262	4,195	4,086



Development of Study Abroad Programs (Bilateral)



Waseda's Study Abroad Programs

- ✪ **Exchange Program**

- ✪ **CS: Customized Study Programs**

Participating in the curriculum prepared for students from Waseda University by the host university. Students can choose one from two types of studying; taking ordinary courses from the beginning, or focusing on studying a foreign language and following the curriculum prepared based on a certain theme.

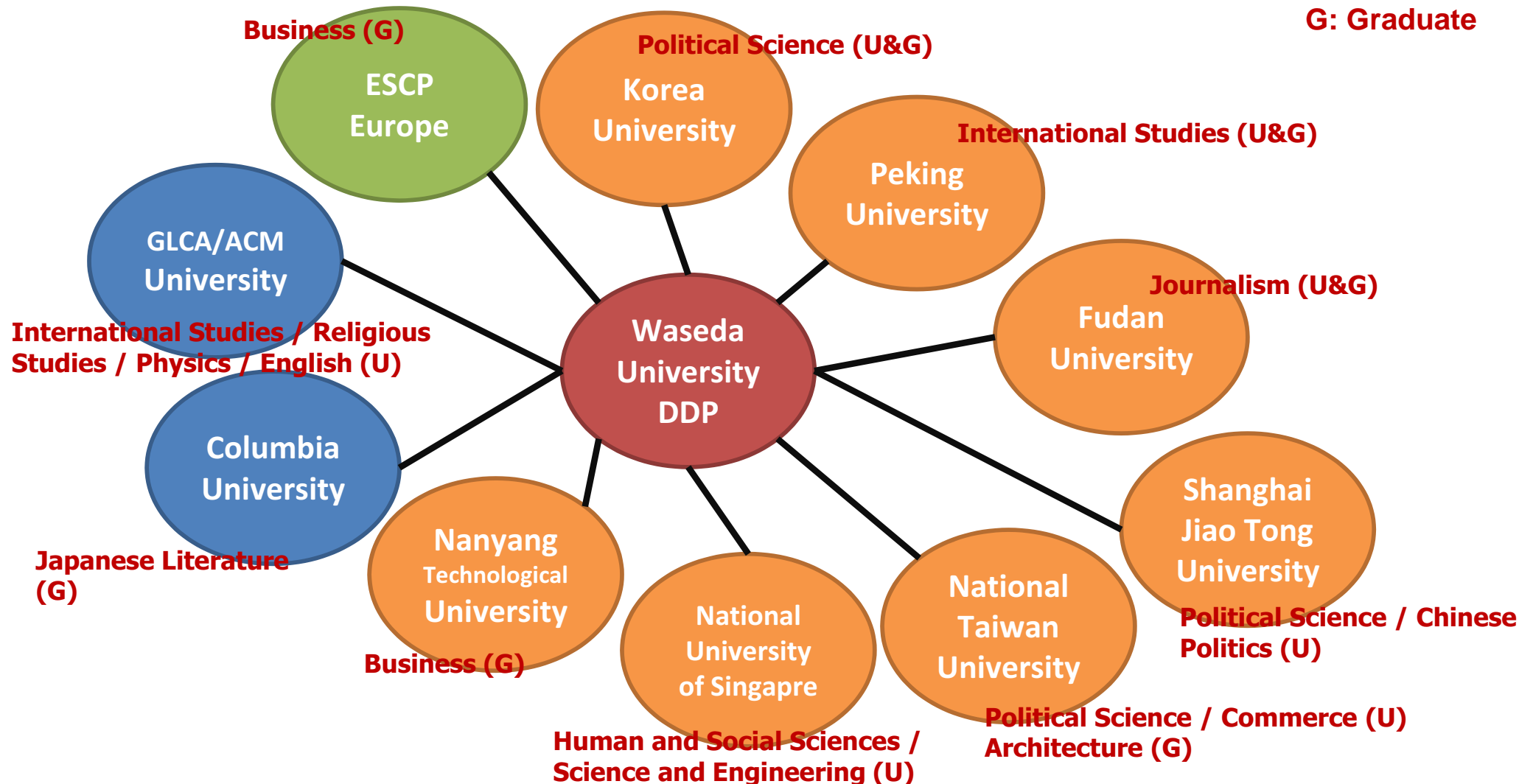
- ✪ **Double Degree Program**



WASEDA UNIVERSITY

Development of Double Degree Programs

U: Undergraduate
G: Graduate



Global Research



Previous and Ongoing Projects Funded by MEXT

AY2003-2007

21st Century COE Program
9 Projects

AY2004-2008

Super COE Program
9 Projects

AY2007-2013

Global COE Program
8 Projects

AY2012-2013

Improvement of Prominent Graduate
School
5 Projects

AY2012-

Program for Leading Graduate Schools
2 Programs

AY2013-

Program for Promoting the
Enhancement of Research Universities

Promoting Internationalization of
University's Education Project
2 projects

AY2005-2008

AY2007-2010

Project for Establishing University
Network for Internationalization (Global 30)
5 Schools, 6 Graduate Schools

AY2009-2013

Re-Inventing Japan Projects
4 Faculties

AY2011-

Go Global Japan Project

AY2012-

Enhancing Development of Global
Entrepreneur Program

AY2014-

Re-Inventing Japan Project
Campus Asia

AY2016-

Top Global University Project

**“Waseda Goes Global” Plan to Accelerate
Waseda Vision 150**

An open, dynamic and diverse education and research network



Research that will contribute to real world peace and happiness in human society

1. CHALLENGES of NEW FIELDS of EDUCATION and RESEARCH

Tackling the creation of academic area that transect the humanities, social sciences, and natural sciences; and considering the development of academic fields for Waseda to address in the future.

2. INNOVATIVE RESEARCH and GLOBAL OUTREACH

Developing an international competitive research organization and boosting support for research, and enhancing the communication of Waseda's research to the world.

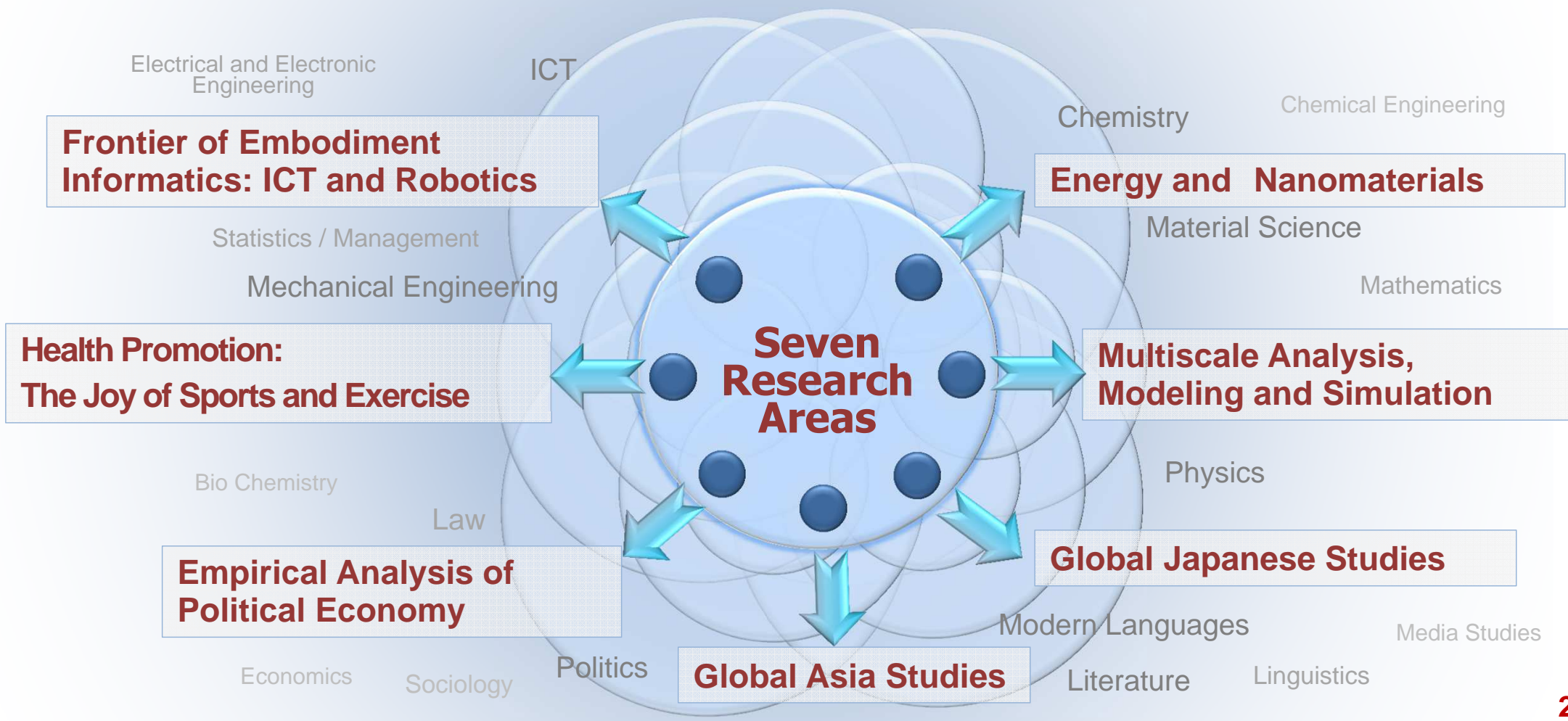
3. GLOBAL RESEARCH UNIVERSITY

Promote international development by building a strategic partnership with overseas universities and institutions.



Priority Research Areas ↔ Seven Model Unit

Waseda strives to enhance activities in seven research areas, collaborating with high-level universities around the world





Seven Model Units

The Seven model units are the driving force to spread new and open systems and programs across the university

The diagram consists of a large, light blue, downward-pointing triangle with a fine grid pattern. Inside this triangle, at the top, is a smaller, solid pink upward-pointing triangle. Three horizontal blue bars are positioned across the middle of the large triangle, each containing white text. The bars are stacked vertically, with the top bar being the widest and the bottom bar being the narrowest, matching the shape of the triangle.

Strong Financial Base

New Recruitment Policies and Flexible Systems

Friendly Support/Campus for Visiting Scholars



Seven Model Units – what is special

Advantages

Joint Appointments (JA)

- ✓ **Collaborative research project unique to Waseda by leading researchers in the world**
- ✓ **Top level graduate students can work with you as research assistants**
- ✓ **Working conditions negotiable** including salary, travel and settlement costs
- ✓ **Eligible to government's and internal research grants**
- ✓ **Accommodation in the campus guest house will be available without exception**
- ✓ **Eligible to government health insurance**
- ✓ **Formal Waseda Faculty ID issued with full access to Internet, libraries and e-journals (CiNii Articles, Web of Science, and Scopus)**

Visiting Professors/Researchers

- ✓ **Working Conditions negotiable**
- ✓ **Prioritized in campus guest house**
- ✓ **Temporary Waseda ID** issued with access to internet, libraries, and e-journals



ICT & Robotics / Nano Energy Materials

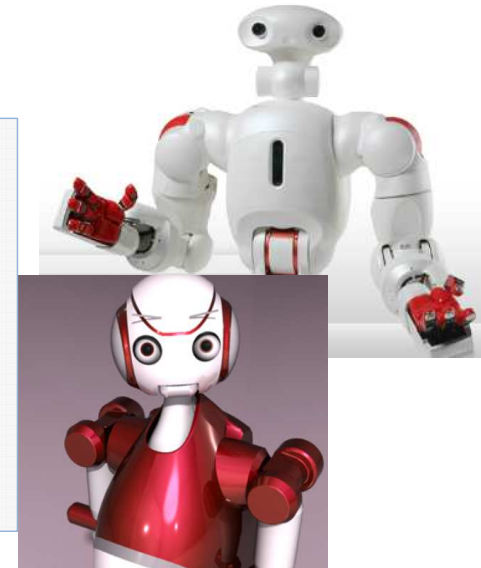
Frontier of Embodiment Informatics Unit

Create innovation by collaborating with ICT and Robotics.

- The fusion of mechanical engineering and computer science and engineering
- Leading graduate program for embodiment informatics (System-Next)

Collaborating Institutions

Technische Universität München / Scuola Superiore Sant'Anna /
Carnegie Mellon University



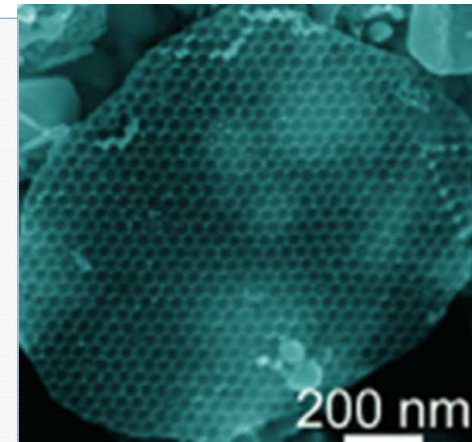
Energy and Nano Materials Unit

Developing human resources to lead the Energy-Next Initiative

- The research for completely new energy sources and a combination of energy processes
- Large-scale production and optimization of energy systems
- Leading graduate program in science and engineering (Energy-Next)

Collaborating Institutions

University Bonn / Monash University / University of Washington





Health & Sports / Physics & Mathematics

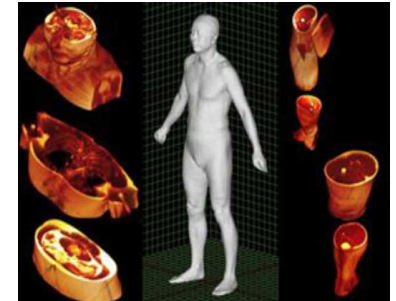
Health Promotion Unit

Building a society where everyone can maintain healthy and enjoyable lifestyles

- Promotion of health, integrating a number of sports research areas concerning middle-aged and elderly people's participation in sport
- Management policies for creating sports environments
- Building infrastructure for improving athletic abilities

Collaborating Institutions

Loughborough University / Deutsche Sporthochschule Köln / Tsinghua University / University of Calgary



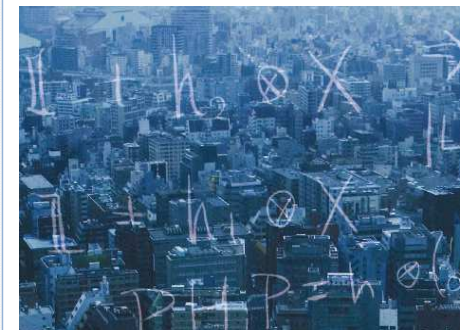
Multiscale Analysis, Modeling and Simulation Unit

Making physics and mathematics a driving force of civilization

- Developing human resources capable of performing mathematically rigorous modeling based on physics, basic engineering, and simulations based on Numerical analyses

Collaborating Institutions

Technische Universität Darmstadt / Università di Pisa / Scuola Normale Superiore, Pisa
Università degli Studi di Bari Aldo Moro





Political Economy / Global Japanese Studies

Empirical Analysis of Political Economy Unit

Aiming to become a world-leading center for positive political economy research

- Developing world-leading public opinion polls for realizing rule-making and policymaking
- Analysis for corporate governance and finance as well as structure and strategy, and accounting behavior

Collaborating Institutions

University of Oxford / Johns Hopkins University / Woodrow Wilson International Center for Scholars



Global Japanese Studies Unit

A global perspective of Japanese culture studies

- Re-examining Japanese culture from a genuinely global perspective by developing institutional hubs for an international scholarly network of Japanese studies

Collaborating Institutions

UCLA / Columbia University



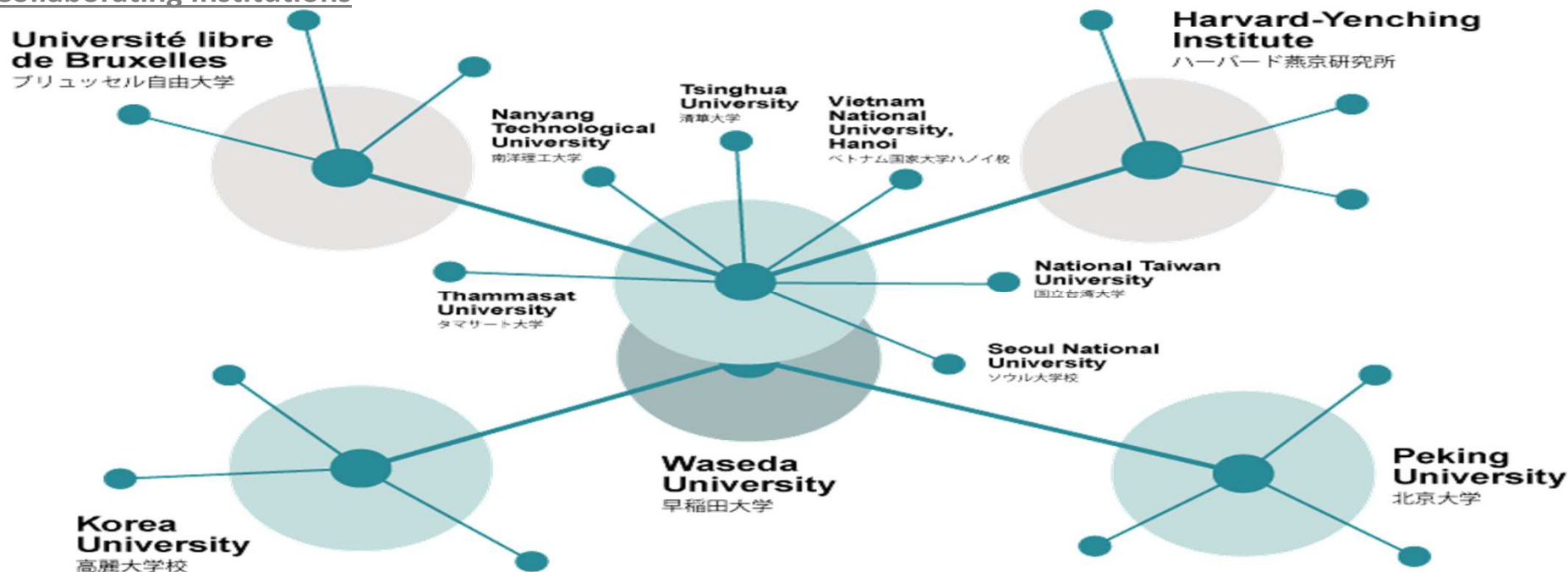


Global Asia Studies Unit

Global Asia Research Center: Toward Reconciliation and Sustainable Development

- Contribute to the global interdisciplinary scholarship on reconciliation and sustainable development and to disseminate its results from Asia to the world.
- Research through the dual perspective of global history and global governance, integrating three spheres of knowledge: peace and security, economics and development, and society and culture.

Collaborating Institutions



WHERE WE ARE NOW



Highly Evaluated Private University in Japan

Graduate Employability: #2 in Japan, #26 Worldwide

- Waseda is ranked No.2 in Japan and 26rd in the world in the QS Graduate Employability Rankings 2018.(#1 in Japan 2017)
- The ranking is calculated from measures of reputation among employers, alumni outcomes, partnerships with employers, employers' presence on campus and graduate employment rates.
- Waseda's high rank is the product of its sustained efforts to adapt and lead in the global era.

Selected Results

Rank	Institution
1	Stanford University
2	UCLA
3	Harvard
4	The University of Sydney
5	MIT
...	
14	The University of Tokyo
26	Waseda University
45	Keio University
...	

Research Grants: #1 for 13 Grant Categories

- Over the last 5 years, Waseda was the top institution in 13 research fields centered in the humanities and social sciences (Ministry of Education data for KAKENHI national funding grants):
Education Engineering; Japanese Literature; Japanese Language Education; Foreign Language Education; Social Law; Civil Law; New Fields of Law; Political Science; International Relations; Money/Finance; Commerce; Educational Psychology; and Architectural History/Design
- This makes it #1 among all private institutions and 5th among all national universities and public research organizations.

No. of categories with the most grants awarded

1	The University of Tokyo	81
2	Kyoto University	53
3	Tohoku University	38
4	Osaka University	33
5	Waseda University	13
	Kyushu University	13
	Hokkaido University	13
8	University of Tsukuba	11
9	Nagoya University	5
	...	



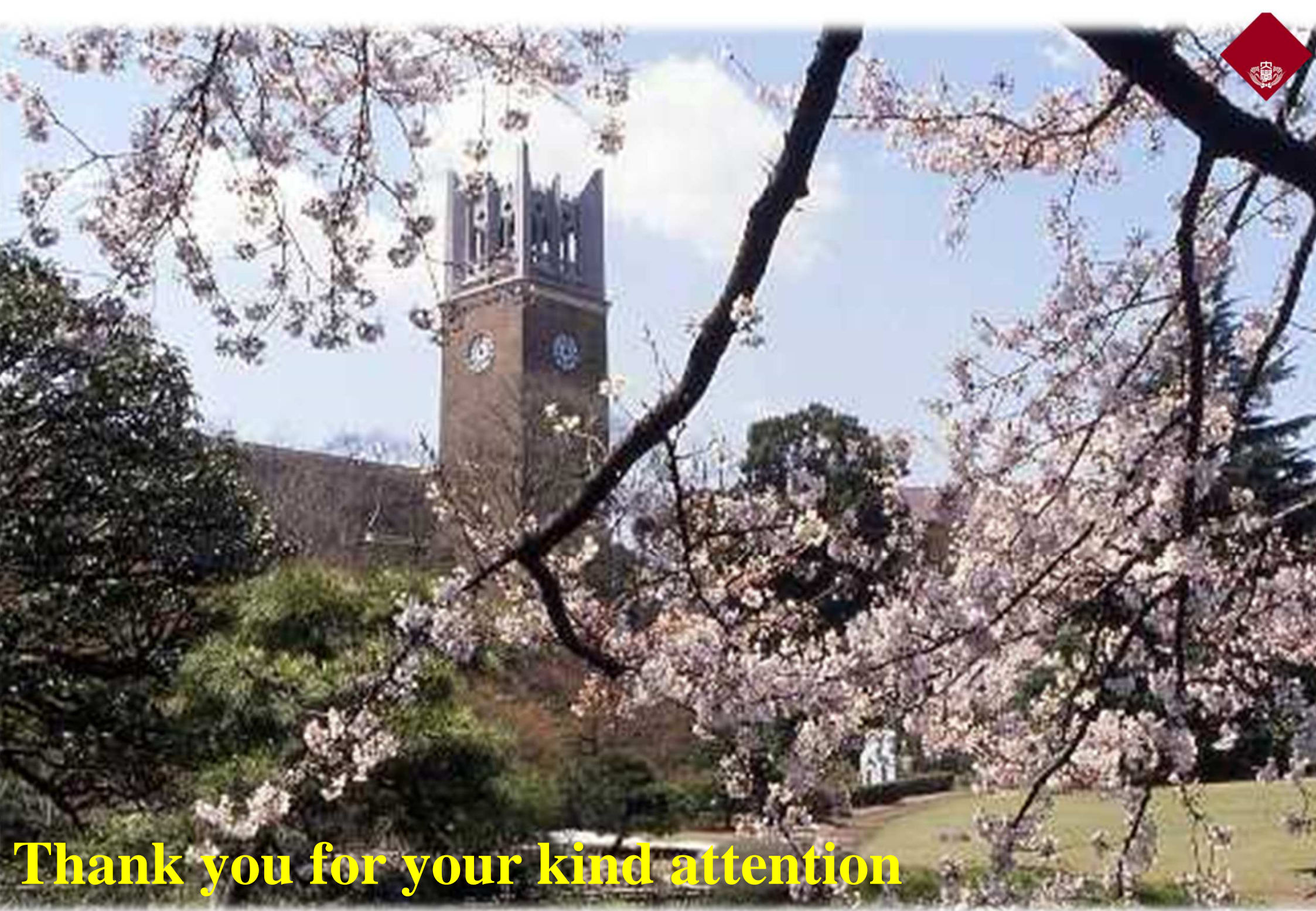
Waseda University in World University Rankings

QS World University Rankings #203 in 2018 Graduate Employability #26 in 2018

- Academic Reputation: 69
- Employer Reputation: 89

9 research areas in the global top 100 (2017.3).

Subject	Global Rank	In Japan
Sports-related Subjects	19	1
Modern Languages	41	3
Engineering-Mineral & Mining	50	1
Business & Management Studies	51-100	2
Politics & International Studies	51-100	2
Geography	51-100	3
Linguistics	51-100	3
Sociology	51-100	3
Engineering – Mechanical, Aeronautical & Manufacturing	51-100	6



Thank you for your kind attention



上智大学
SOPHIA UNIVERSITY

叡智が世界をつなぐ

Sophia University

“Men and Women, for Others, with Others”



**A University with Global Mission
Tokyo, Japan**

Sophia Overview 1/2

Japanese name: “Jochi Daigaku”（上智大学）

**Sophia University was founded by Jesuits in 1913:
mission to establish bridges between Japan and the world**

Located in the heart of Tokyo

Pioneer in International Education in Japan

Sophia Overview 2/2

In 1949 we established Japan's first program taught entirely in English.

**We continue to lead Japanese academic world in offering international programs:
Worldwide Network with 325 Partner Universities from 68 Countries (as of 2018.1)**

**Educational philosophy of
the Society of Jesus**

"Men and Women, for Others, with Others"

Academic Programs - Undergraduate

9 Undergraduate Faculties, 29 Departments

1. Theology
2. Humanities
3. Human Sciences
4. Law
5. Economics
6. Foreign Studies
7. Global Studies (since 2014)
8. Liberal Arts *
9. Science & Technology

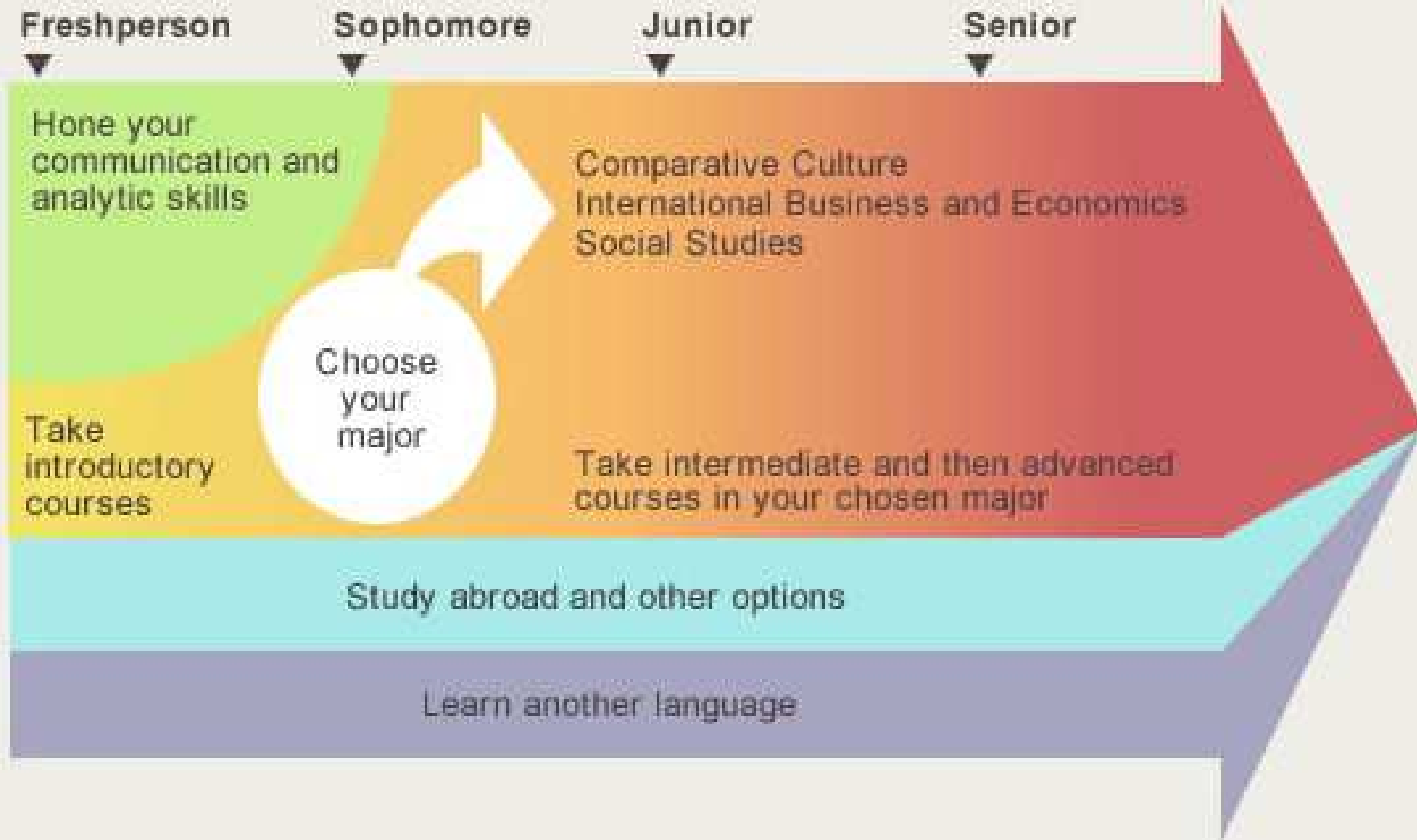
*Green Science **

*Green Engineering **

* = English-based programs



Program Structure of Faculty of Liberal Arts, (English taught program)



Academic Programs - Graduate

10 Graduate Schools, 26 Programs

1. Theology
 2. Applied Religious Studies
 3. Humanities
 4. Human Sciences
 5. Law
 6. Economics
 7. Language and Linguistics (TESOL Program *)
 8. Global Studies *
 9. Science & Technology
*Green Science and Engineering **
 10. Global Environmental Studies *
- * = English-based programs



Worldwide Partner Institutions

**325 partner institutions from 68 countries
(As of January 2018)**

North America

Georgetown University
Boston College
University of Pennsylvania
University of British Columbia

Europe

University of Edinburgh
Institut d'Etudes Politiques de Paris
Universität Heidelberg
Università di Roma "La Sapienza"
Leiden University
Moscow State University

Latin America

Pontificia Universidad Católica de Chile
Universidade de São Paulo
National Autonomous University of Mexico

Asia

Tsinghua University
Fudan University
The University of Hong Kong
Yonsei University
Ateneo de Manila University
Chulalongkorn University

Oceania

The University of Melbourne
The University of Queensland
The University of Auckland

International Students/Faculty (2016)

**1465 International Students
from 77 Countries**

China (38%)

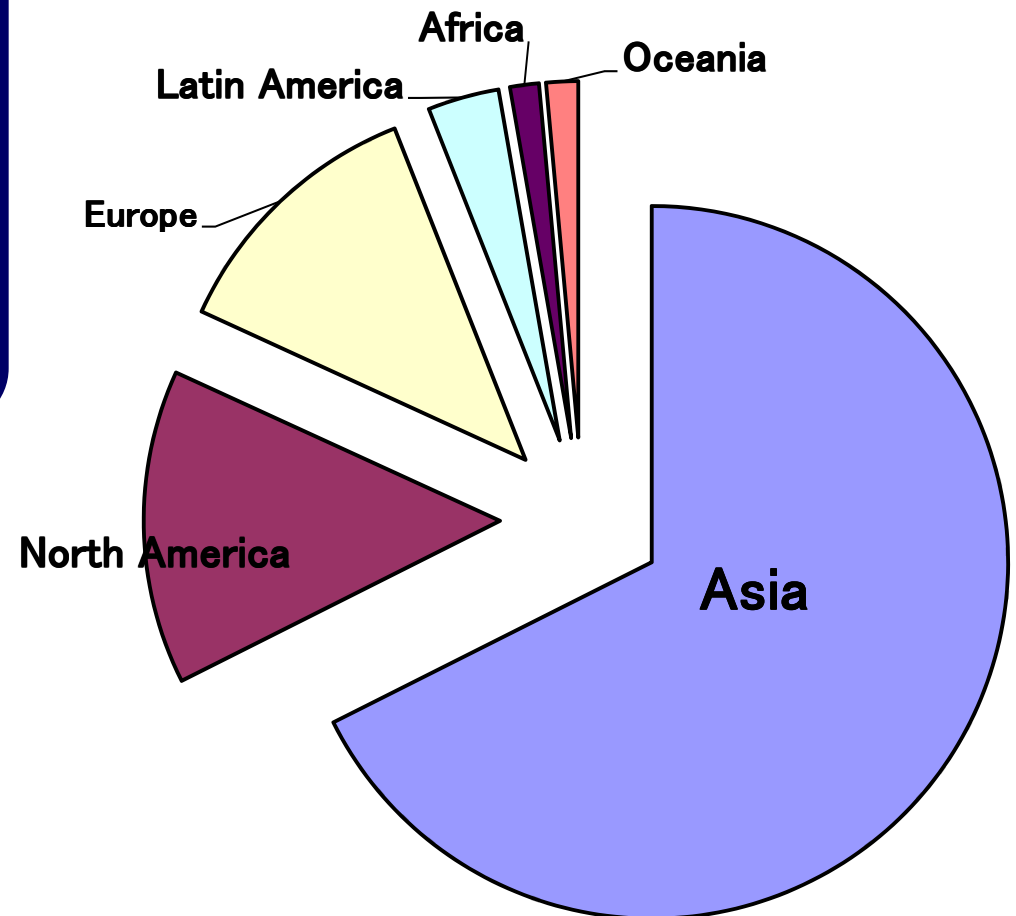
South Korea (16%)

USA (13%)

Europe (12%)

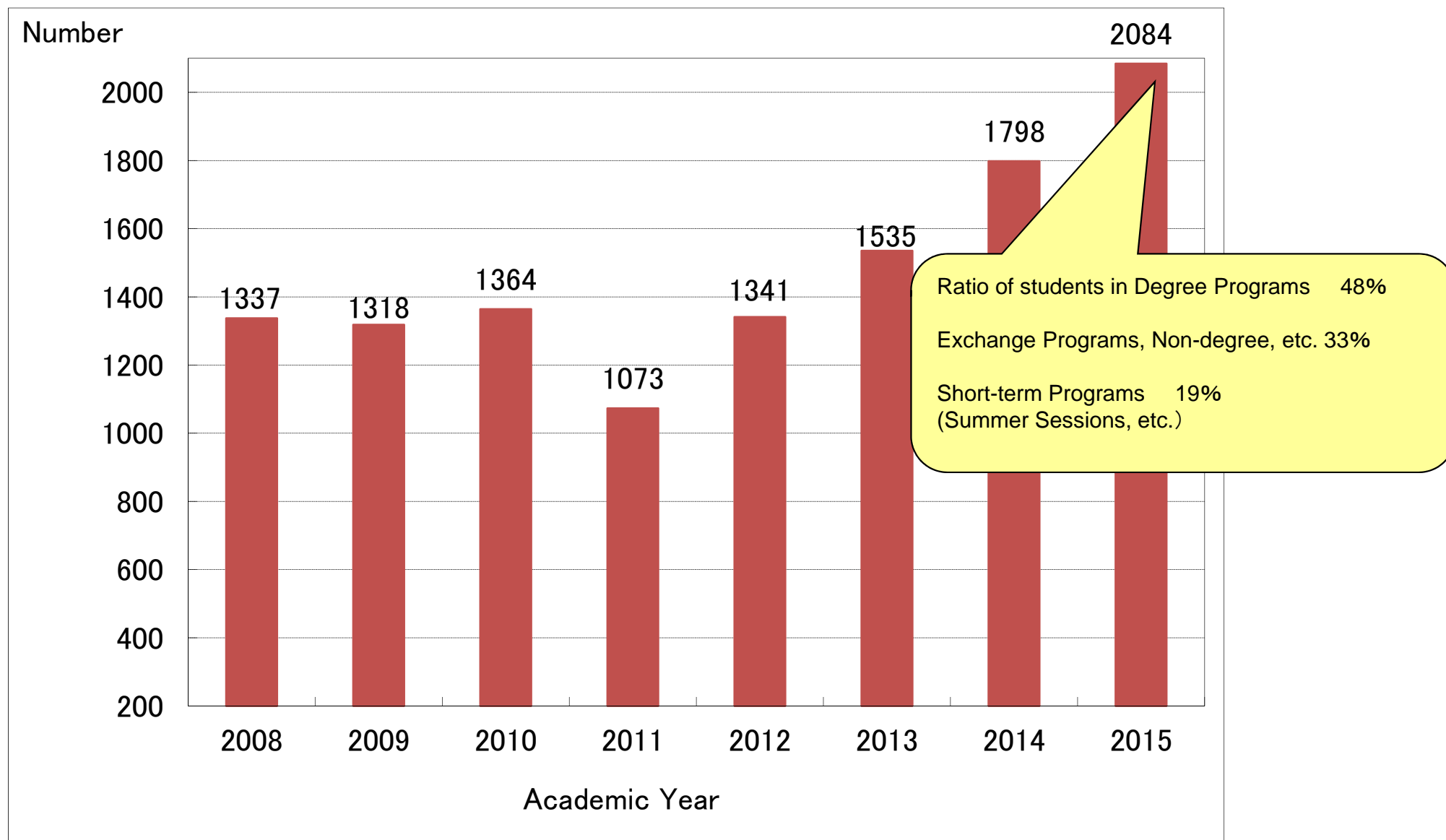
**67% of International
Students from 18
countries in Asia**

**15% of full-time faculty
members from overseas**



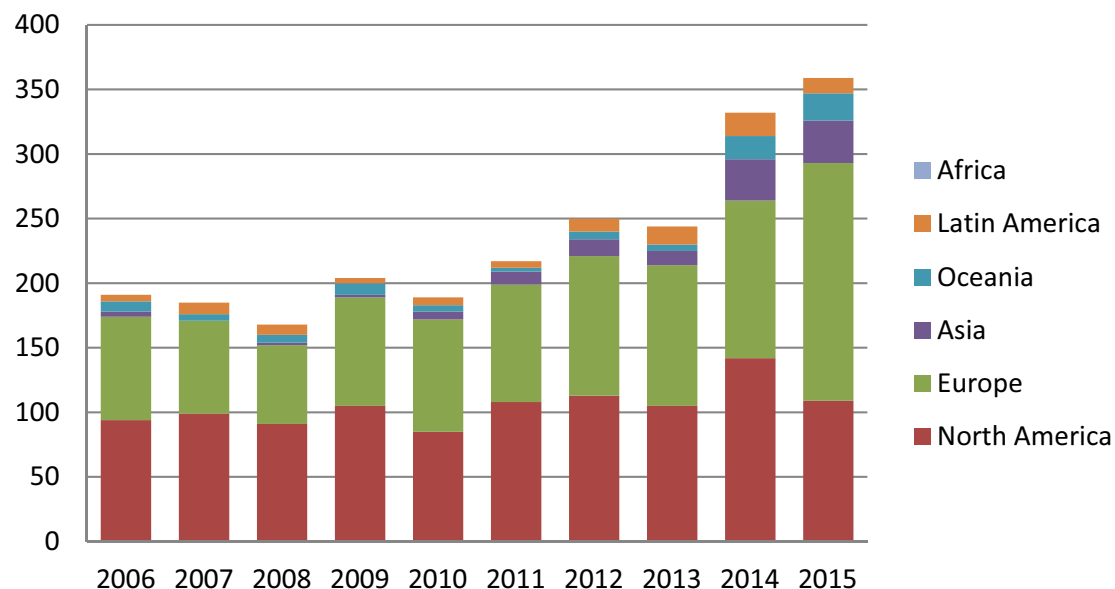
Current Situations

Number of Incoming Foreign Students (Academic years of 2008~2015)

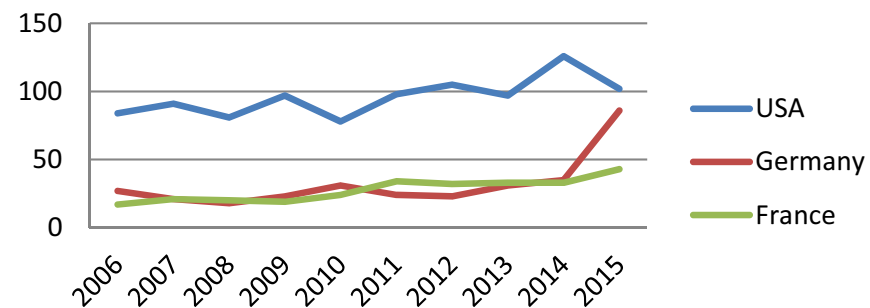


※Degree, Foreign Exchange, Non-Degree Students and Students in Short-term Programs with Foreign Nationalities.

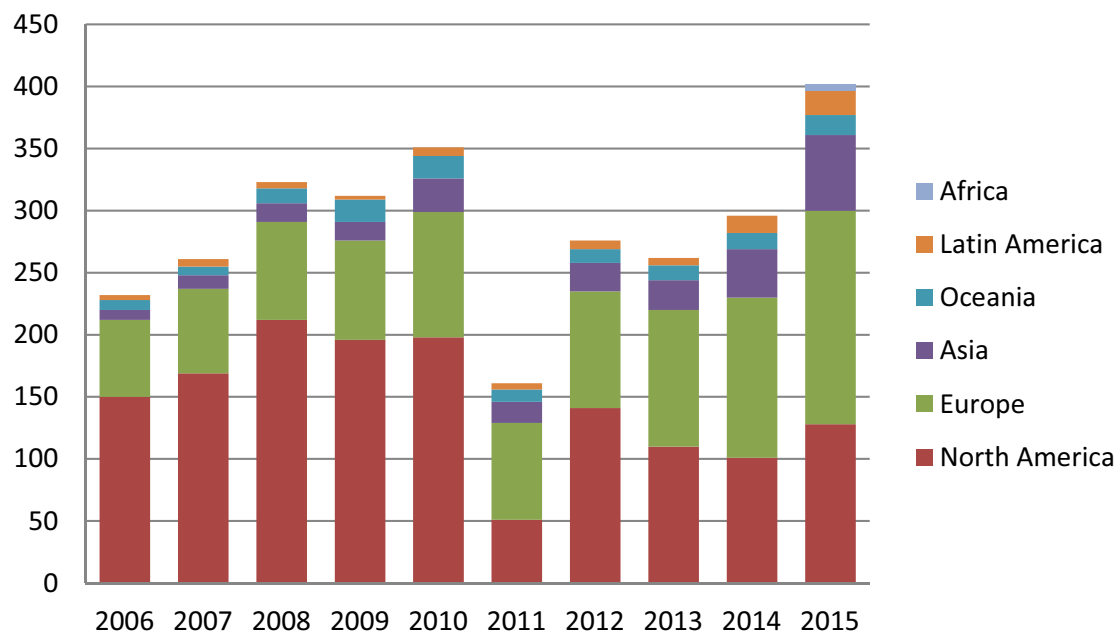
Outbound Exchange Students-Sophia University



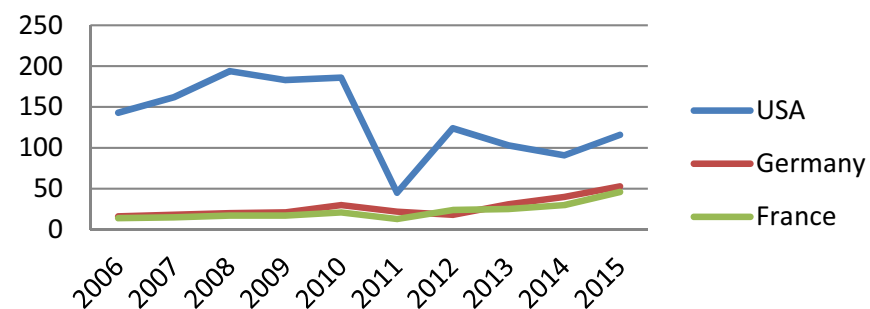
Top3 Countries - Outbound Students



Inbound Exchange Students-Sophia University



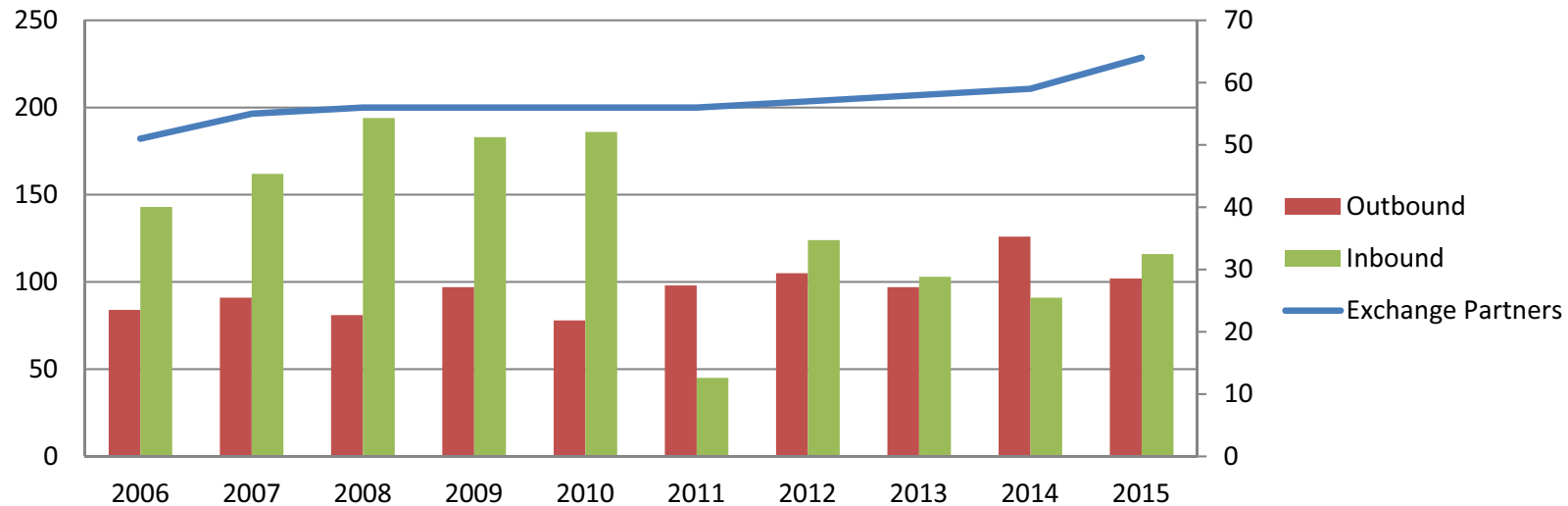
Top3 Countries - Inbound Students



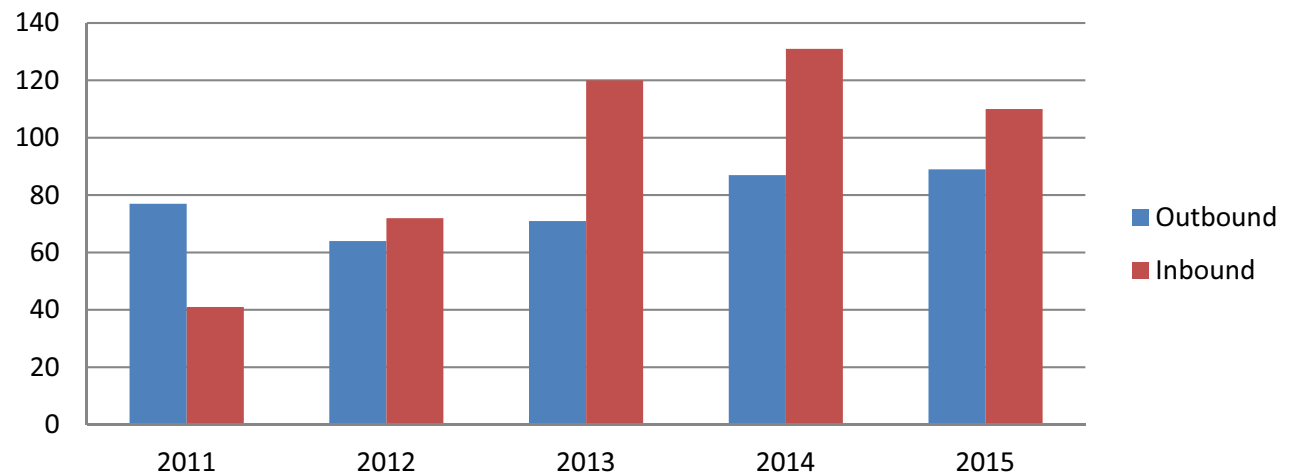
Current Situations

Student Exchange between Sophia & US Partners

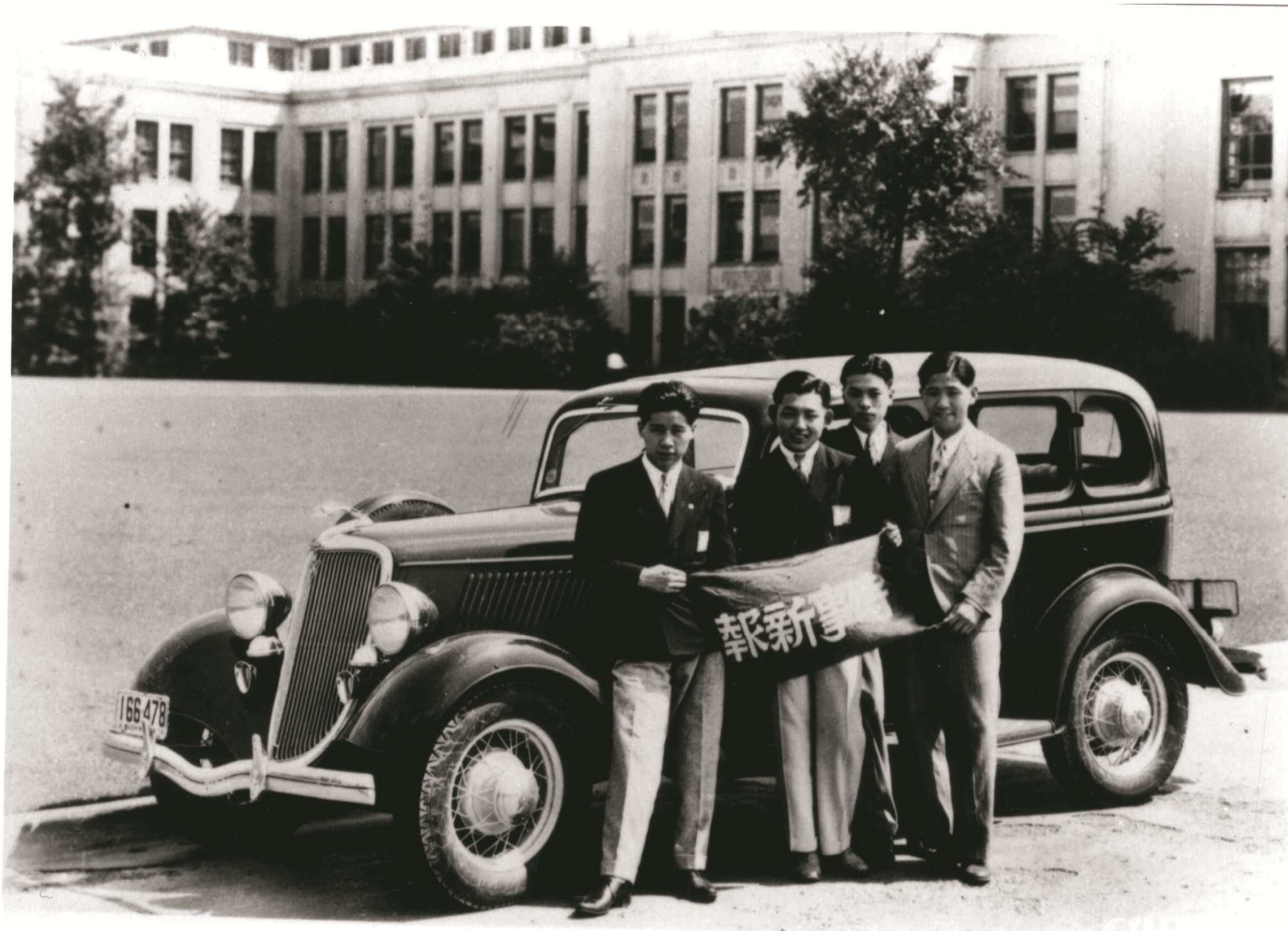
Student Exchange between Sophia & US Partners



Short-term Program -Inbound & Outband between Sophia & US Universities



4 Automobile Club Members on a Road Trip Across North America
(Taken in front of Ford Headquarter), 1934



Quonset Huts Turned into Student Residences, 1948



International Division, Graduation Day, 1956



International Division, Biology class by Prof. D.McCoy, S.J. (1950s)



FILE No 8

TITLE 国際学部学生

NEGA No X 19~15

Place 3号館 教室

Date 1963. 年 月 日



上智大学涉外室：撮影



Yotsuya Campus in 2017



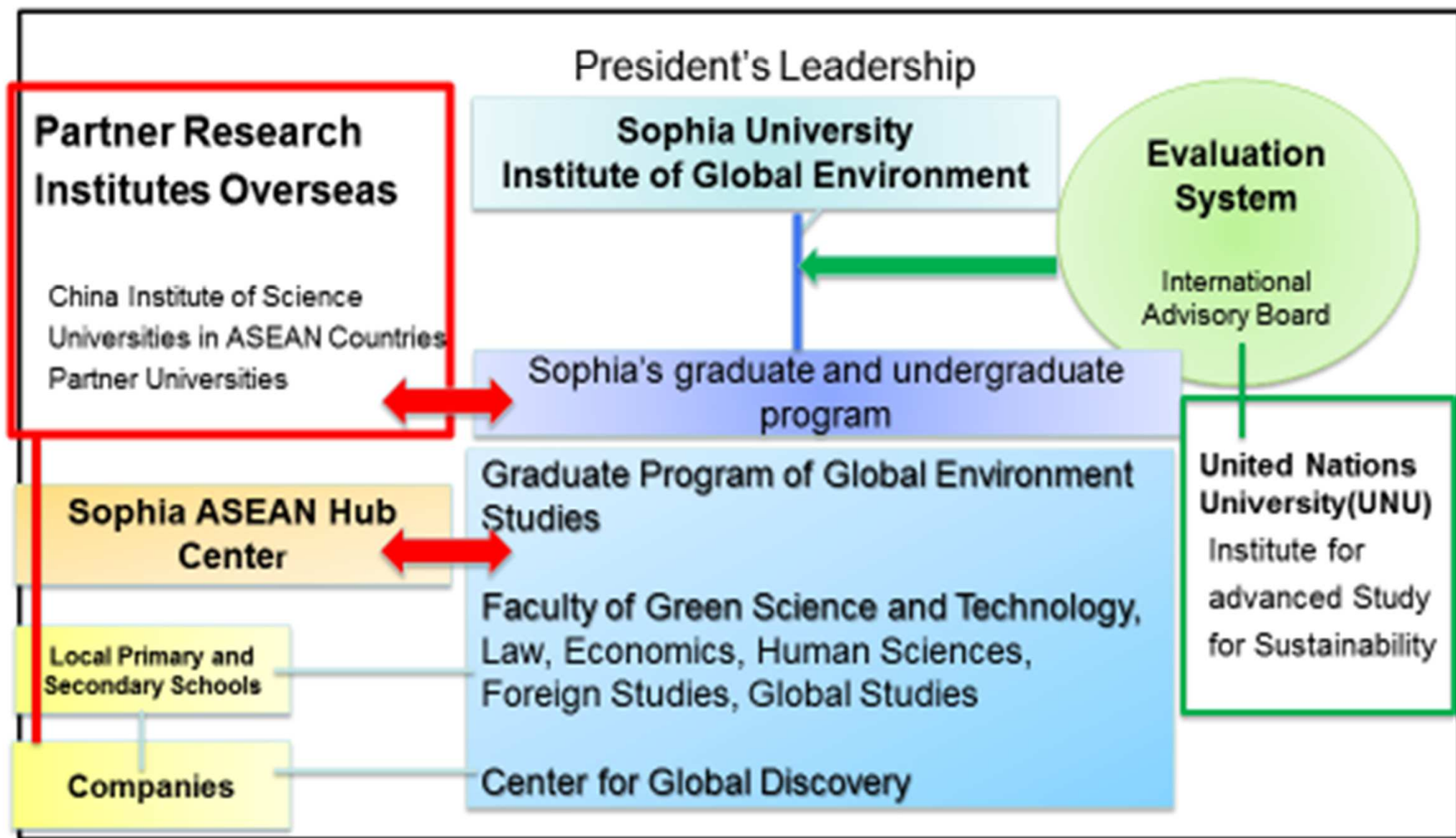


December 14 2017
"Global Challenges: The Role of Human Security"
Special lecture by UN Secretary-General António Guterres

December 18 2017
"Let's Speak to the Pope Francis"
Video Conference for students to ask questions to the Pope



Trans-Disciplinary Environment Research



Summer Session in Asian Studies

■ **June 4 - 29, 2018 / July 2 - 27, 2018**

Since 1961, Sophia University's Summer Session in Asian Studies has provided students with the opportunity to learn about traditional and contemporary Japan.



Sophia Bringing the World Together

叡智が世界をつなぐ



上智大学
SOPHIA UNIVERSITY

Strategic Approach for Global Partnerships and Effective Use of the UMAP

Shingo Ashizawa
Toyo University



TOYO UNIVERSITY



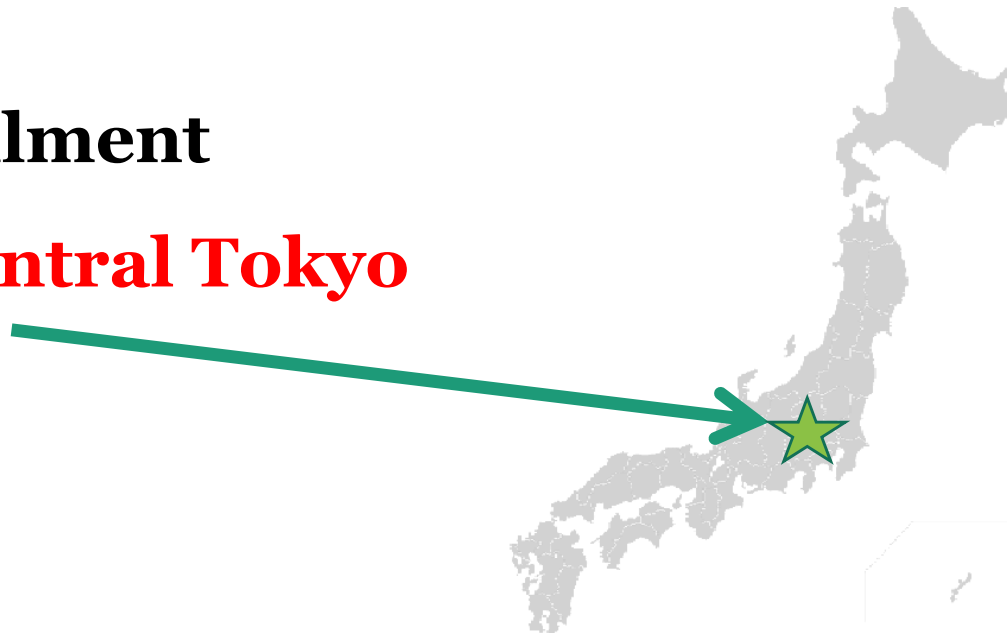
TOYO UNIVERSITY

Who are we?

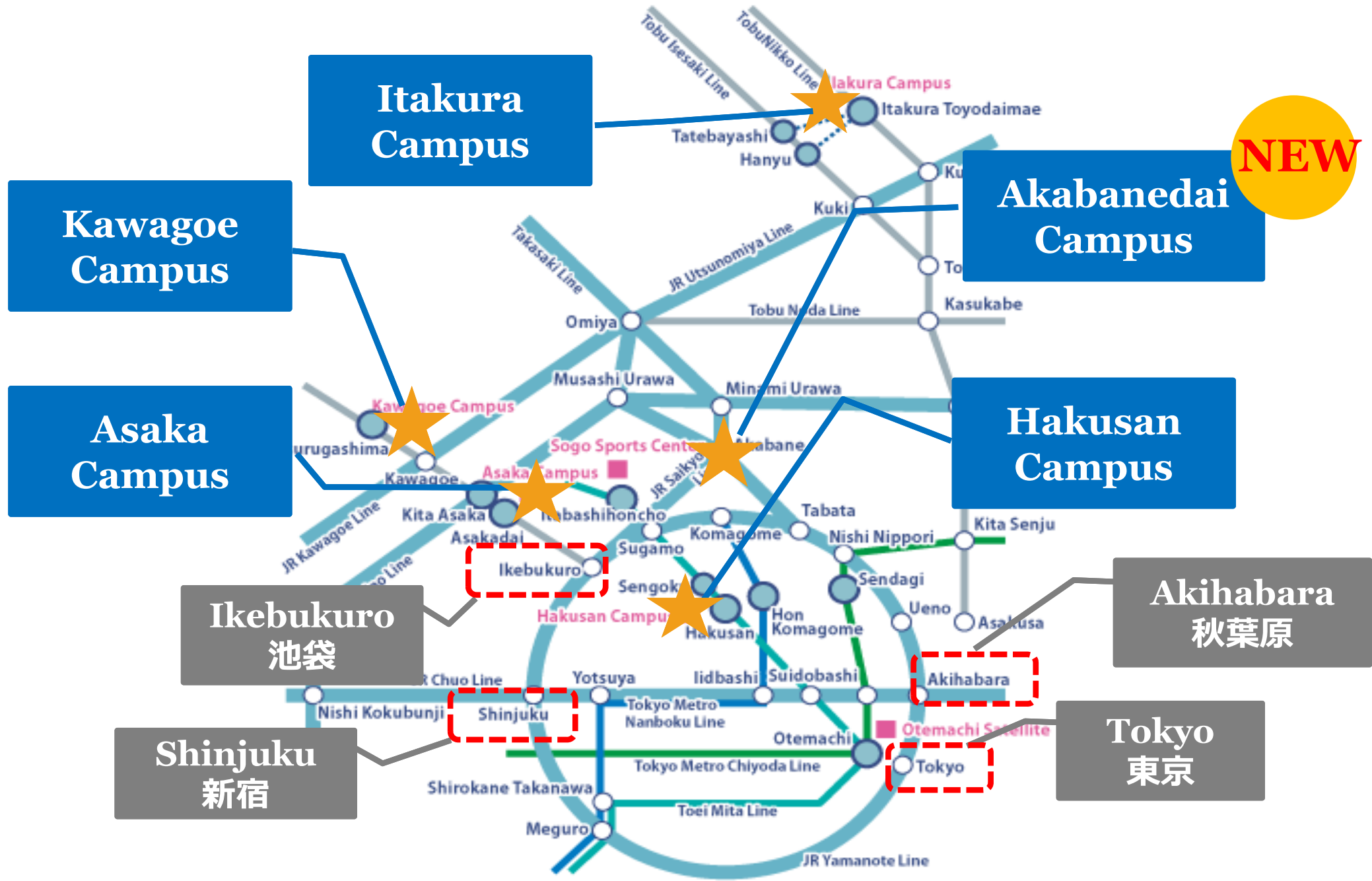
- Established in 1887
- Started as a philosophy academy
- Grew into comprehensive university with 11 undergraduate programs and 11 graduate schools
- 30,000 enrollment
- **Located in central Tokyo**



**Founder
Dr. Enryo Inoue**



Campuses



Three Pillars for Nurturing Globally Talented Individuals

PHILOSOPHY EDUCATION

Promoting education rooted in philosophy as a study which determines the principles behind all phenomena.

CAREER EDUCATION

Offering effective support to help students become established in their careers.

INTERNATIONALI- ZATION

Fostering linguistic proficiency, cross-cultural understanding, and other abilities useful for playing important roles on the global stage.

Efforts in Internationalization

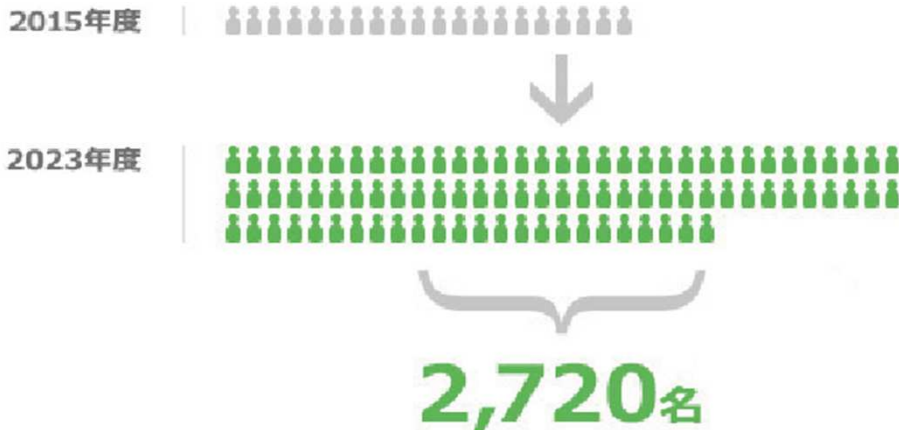
国際化への取り組み

※ 2015年度データは2015年11月現在

Number of international students

全学生に占める外国人留学生数
(大学院含む)

■ 2015年度
608 ▶ **2,720**
(在日外国人含む)



Number of Japanese students who study abroad

日本人学生に占める留学経験者数
(大学院含む)

■ 2015年度
819 ▶ **2,870**



Efforts in Internationalization

国際化への取り組み

※ 2015年度データは2015年11月現在

No. of courses offered in foreign languages

外国語による授業科目数
(大学院含む)

■ 2015年度
326 ▶ **1,513**
■ 2023年度

No. of non-Japanese faculty members


外国人および海外学位取得教員
(大学院含む)


■ 2015年度
231 ▶ **400**
■ 2023年度



Undergraduate Programs (English Track)

Started in April 2017

Faculty		Department	Educational Goal
Global and Regional Studies 	The Faculty of Global and Regional Studies aims to develop practical human resources that can play an active role in the dynamically changing global community, in which a variety of issues – such as economic, poverty-related, resources-related, environmental, and conflict-related issues- are constantly emerging. There is a critical need for innovation in various social systems as well as their background cultures and values.	■ Global Innovation Studies	GIS develop new leaders with an international outlook who can work within existing frameworks and establish new systems to create innovative solutions to the unprecedented challenges which today's generation faces.
		■ Regional Development Studies	In RDS, students acquire the ability to see various issues in countries, regions , and communities around the world from a global perspective. It aims to train experts who can promote hands-on regional development mainly in Asia through business activities and development assistance.

Faculty	Department	Educational Goal
Information Networking for Innovation and Design 	■ Information Networking for Innovation and Design	The Faculty of Information Networking for Innovation and Design is being designed to develop individuals with expertise in the comprehensive management of information and the promotion of technological innovation. Students will acquire proficiency in networking and managing information by using state-of-the-art ICT (information and communication technology), cloud computing, and big-data analysis.



TOYO UNIVERSITY

Toyo Top Global Scholarship Type A

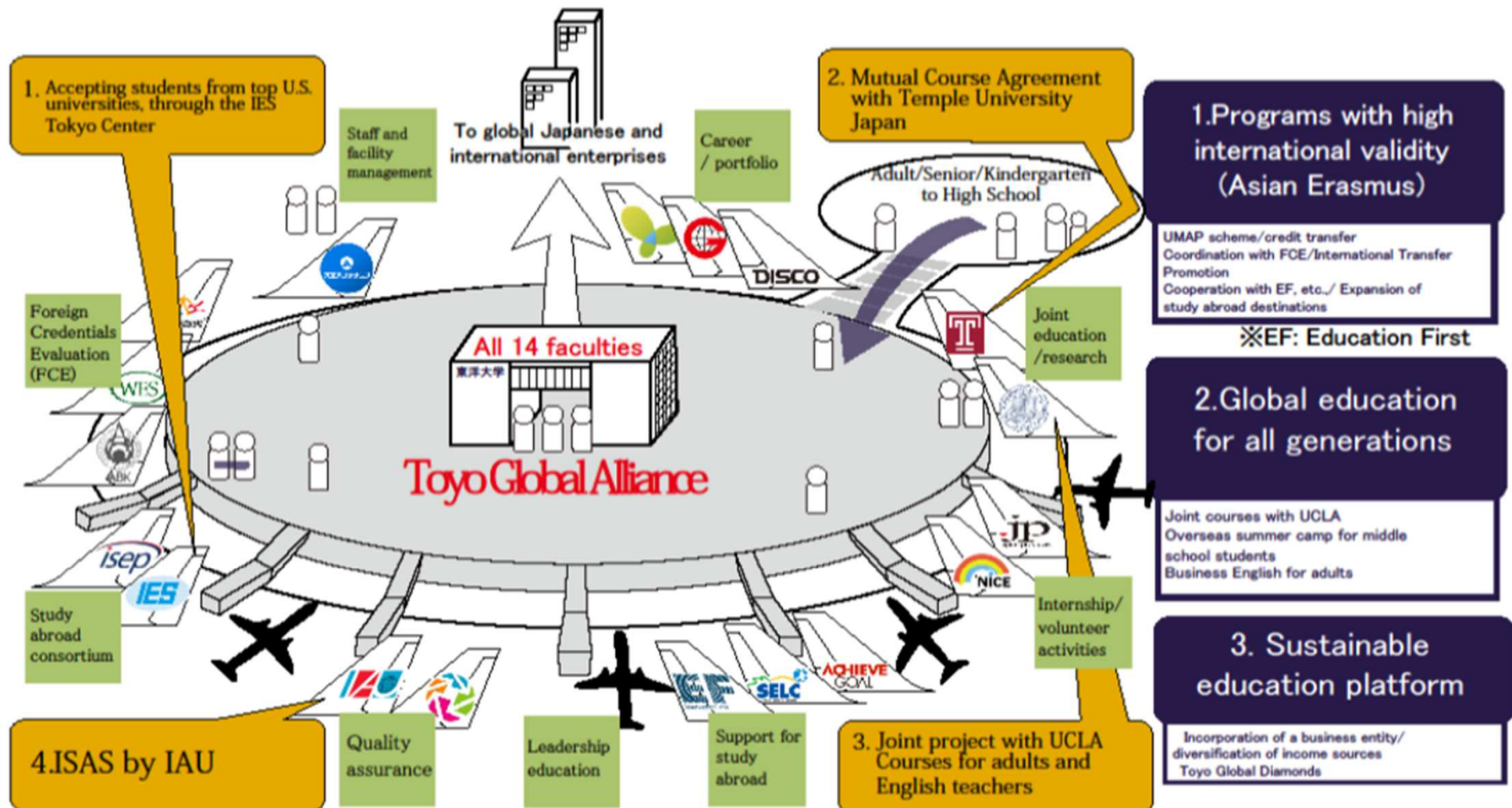
- Tuition and all associate fees waived
- Scholarship
150,000 JPY / month
- 60 Spots Available
- Period: 4 years
- 100 % English Medium
Instruction



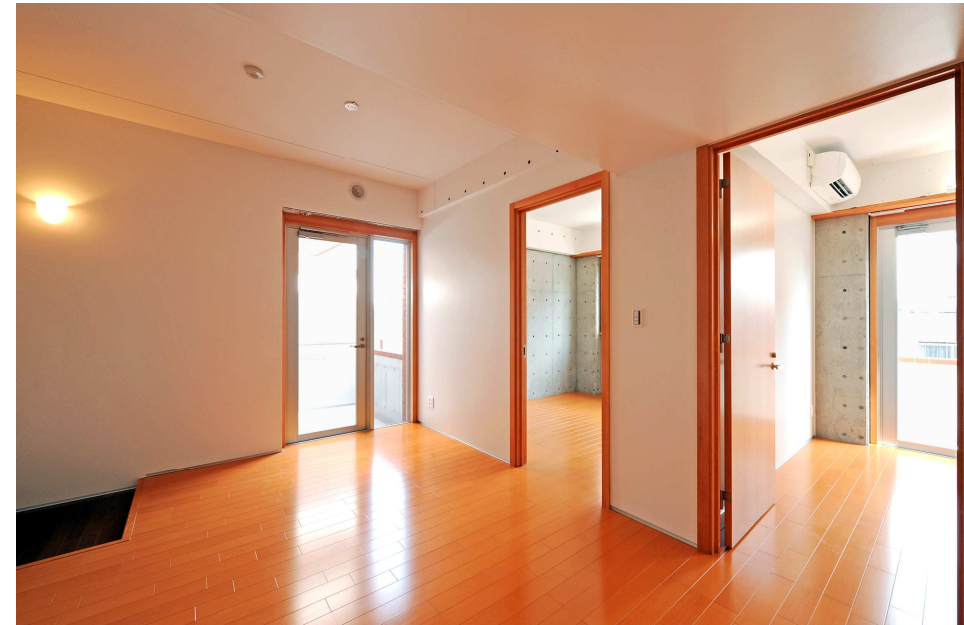
Toyo Global Alliance

Establishment of “Toyo Global Diamonds” in 2017

→ Aim for “self-sustainability” after project completion



Toyo International house



Aikido Lesson (Monthly event)



English Community Zone (ECZ)

Weekly workshop



Daily activity



Farewell party
(Monthly event)



Toyo' LA office : Study Tour of Japanese American Community





Thank you

Shingo Ashizawa

Toyo University

ashizawa@toyo.jp



University Mobility in Asia and the Pacific

A Potential Platform for Promoting Outbound American & Canadian Student Mobility in the Asia-Pacific Region

**Deputy Secretary General, UMAP International Secretariat
Prof. Shingo Ashizawa**

Conference to Discuss Higher Education Co-operation in Asia/Pacific Region (Canberra, Australia, 17-19 September 1991)



Challenges & Opportunities

For promoting outbound student mobility in U.S.A and Canada, **we should consider**.....

- Balancing outbounds with inbounds in student exchanges
- Facilitating credit transfer among different countries/territories.
- Providing more financial support to students studying abroad.



University Mobility in Asia and the Pacific

can be a solution.

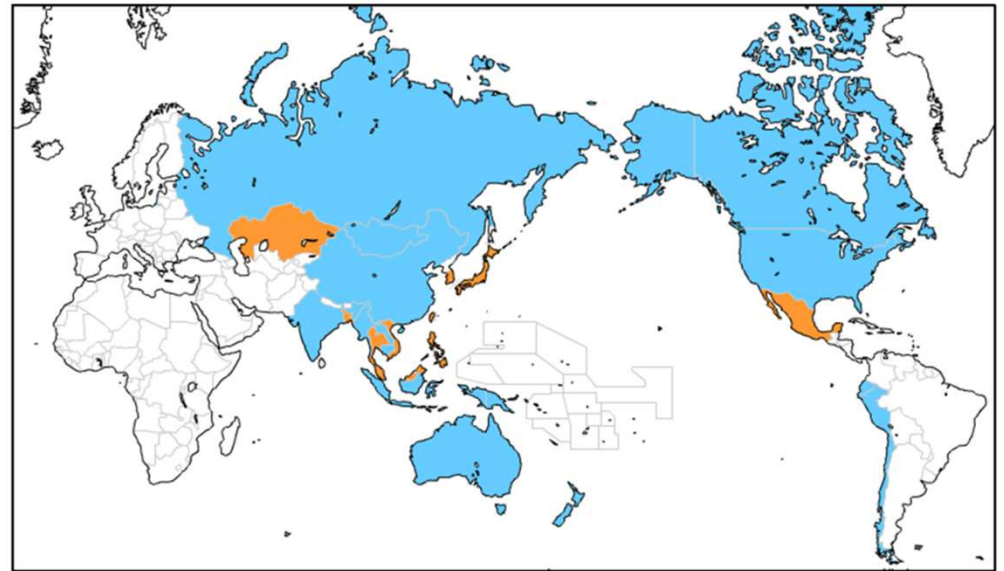
Members_Need your commitment

UMAP comprises **35 eligible countries/territories**.

Currently **230 universities** in **16 full member states** are active.

Member Countries/Territories

Australia / Bangladesh / Brunei /
Cambodia / Canada / Chile /
People's Republic of China /
Ecuador / Fiji / Guam / Hong Kong
/ India / Indonesia / Japan /
Kazakhstan / Republic of Korea /
Laos / Macao / Malaysia / Mexico /
Mongolia / Myanmar / New
Zealand / Papua New Guinea / Peru
/ Philippines / Reunion Island /
Russia / Samoa / Singapore /
Chinese Taipei / Thailand / Timor-
Leste / USA / Vietnam



Note:

Currently 16 states shown in orange among 35 eligible states are FULL members which participate in student exchanges by paying the membership fees (\$500-\$4,000/year).

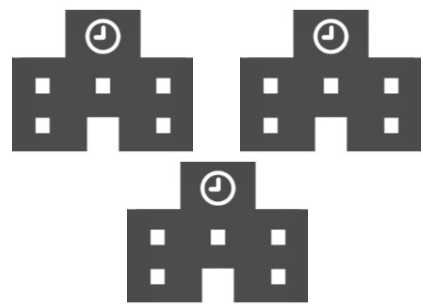
UMAP Programs

**Multilateral
Student
Exchange**

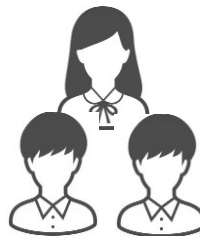
**Bilateral
Student
Exchange**

**Short-Term
Student
Exchange**

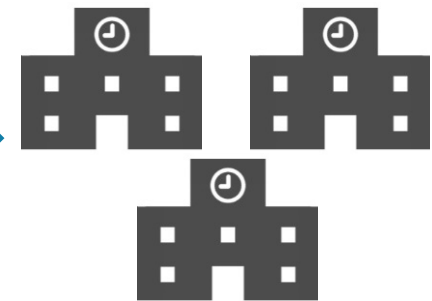
**Research
Collaboration
Program**



Participating Univ.



UMAP
University Mobility in Asia and the Pacific



Participating Univ.

Merits of UMAP

- Broadening universities' network in the Asia-Pacific region without separately signing bilateral agreements.
- Providing students with hundreds of choices to study abroad.
- Allowing you to multilaterally balance the outbounds and the inbounds.

UMAP Credit Transfer Scheme (UCTS)

Definition of UCTS

1 UCTS = 38 – 48 hours of student workload.

(This includes 13-16 hours of instruction.)

(1 “academic” hour can be between 45-60 minutes.)

Conversion with the world

	UMAP	Asia	USA	Europe	UK
Credit Conversion	1 UCTS	1 credit	1 credit	1.5 ECTS	3 credit
Student Workload	38-48 hrs.	38-48 hrs.	45 hrs.	37.5-45 hrs.	Converted from ECTS
Teaching	13-16 hrs.	13-16 hrs.	15 hrs.	-----	-----

UMAP Scholarships

Japanese Government Scholarship

(For short-term & semester-long)

- Approx. \$700/month for international inbound students in Japan under UMAP programs.
- Approx. \$500-\$900/month for Japanese outbound students under UMAP programs.

Taiwanese Government Scholarship

(For semester-long only)

- Approx. \$700/month for international inbound students in Taiwan under UMAP programs.
- Approx. \$700/month for Taiwanese outbound students under UMAP programs.



Thank you very much!

For more information, please visit our website.
www.umap.org

Prof. Shingo Ashizawa

Deputy Secretary General, UMAP IS
c/o Toyo University, Japan

Email: umap-is@umap.org