



Association of International
Education Administrators

2020 ANNUAL CONFERENCE

*Rethinking Comprehensive
Internationalization for a
Global Generation*

European Universities Networks, the next step in Internationalisation?

Ramon Ellenbroek, Utrecht University (Chair)

Meritxell Chaves, Universitat de Barcelona

Kalpen Trivedi, University of Massachusetts Amherst

What are the European Universities?



Setting a vision for 2025 and beyond

A more united and stronger Europe
with...

...increased **quality, performance and competitiveness** of European higher education institutions

the first round as well as the developments up till now

- 17 alliances awarded
- 124 institutions
- Follow up actions



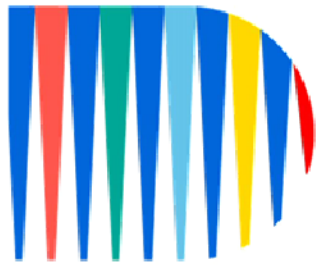
Will this impact the Higher Education Landscape as a whole?

It is a bit early to be certain, but imagine that all these HEI's work towards:

- Ensuring that students, staff and researchers enjoy seamless mobility (physical or virtual) to study, train, teach, do research, work or share services at cooperating partner institutions
- Working in transdisciplinary and transnational teams of students, academics and external stakeholders tackle big issues facing Europe and the world (such as the Sustainable Development Goals)
- Making sure that student bodies that reflects the social, economic and cultural diversity of the population
- Organizing education is such a way that students can design their own flexible curricula (leading to European Degree's)
- Ensuring practical experience to foster an entrepreneurial mind-set and develop civic engagement

The Case of CHARM EU

CHARM-EU



**CHALLENGE-driven
ACCESSIBLE
RESEARCH-based
MOBILE
EUROPEAN
UNIVERSITY**



[charm.eu](https://www.charm.eu)



[charm_eu](https://twitter.com/charm_eu)



UNIVERSITAT DE BARCELONA



Trinity College Dublin
Coláiste na Tríonóide, Baile Átha Cliath
The University of Dublin



Utrecht University



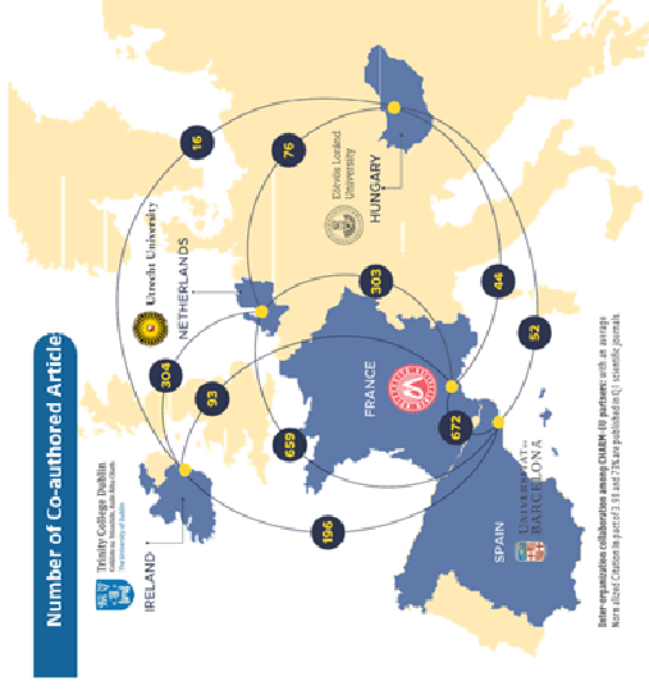
Eötvös Loránd University



UNIVERSITÉ DE MONTPELLIER



Co-funded by the
Erasmus+ Programme
of the European Union



Unique points of CHARM-EU



Creating a new **innovative governance** model of multi-institutional cooperation that encourages **co-creation and co-working** among the university community and the stakeholders.



Designing an **inspiring experience** for all students and staff to become **critical thinkers and better citizens** in a **multicultural and multilingual and inclusive learning** environment.



Delivering **skills and attribute-based transdisciplinary challenge-driven programmes** within a new and **flexible academic structure with self-directed learning pathways** within the theme of **Reconciling Humanity with the Planet**.

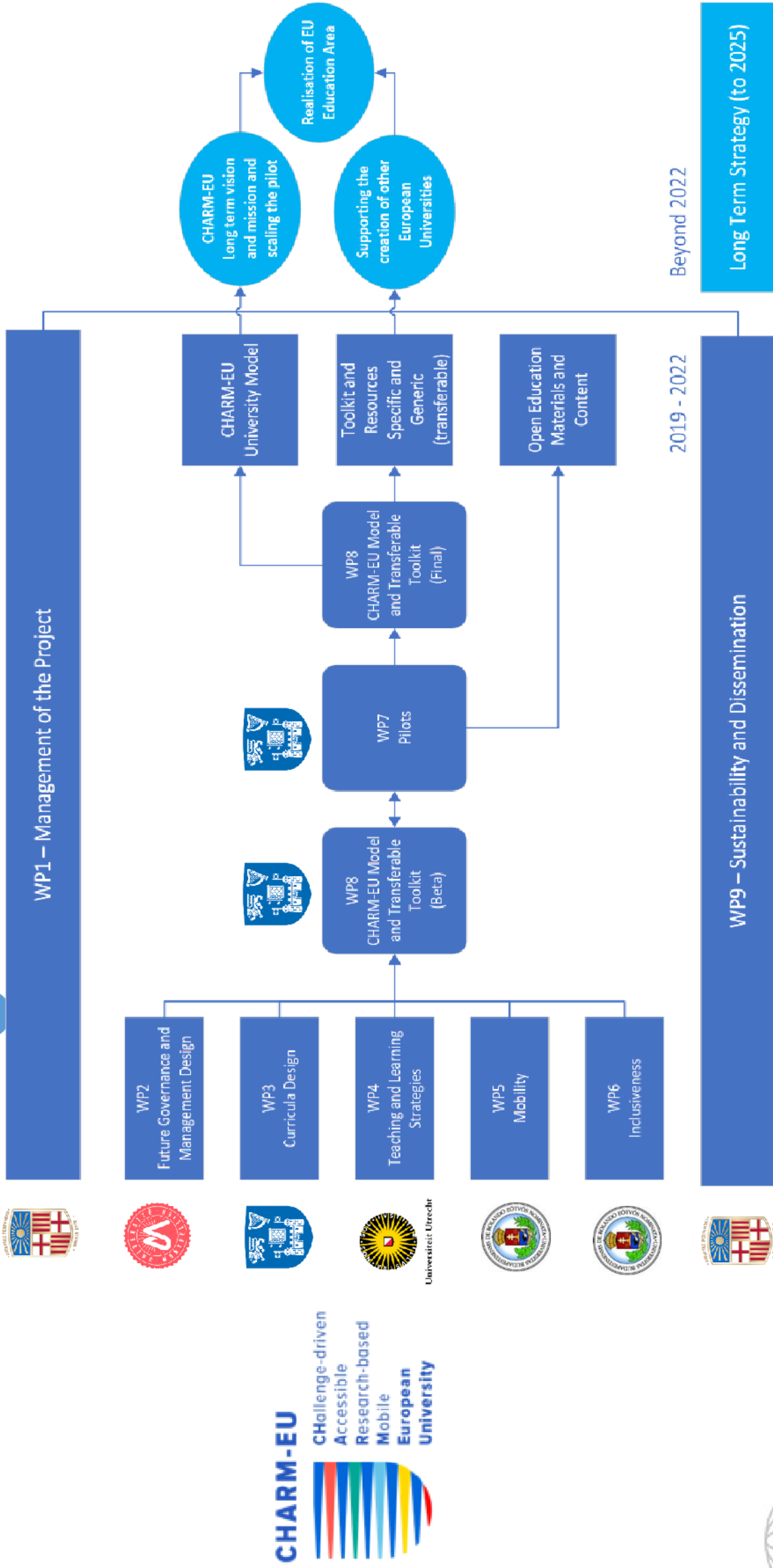


Innovating in curriculum and learning strategies using the **full potential of the knowledge triangle** across and within the disciplines and within the transdisciplinary space.

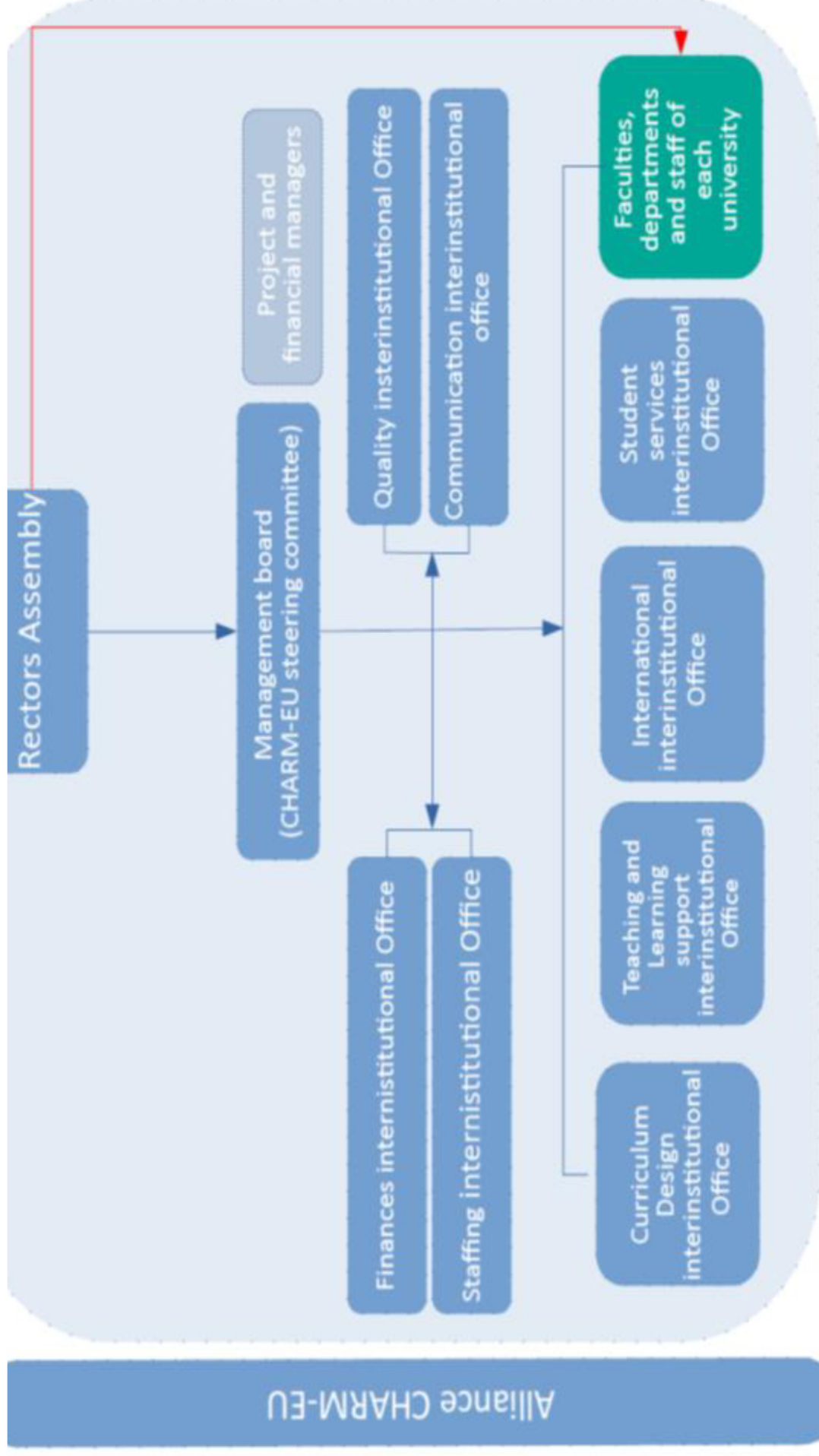


Ensuring **financial sustainability** for all potential future partners within European Universities.

Creating CHARM-EU from scratch



How we are organized



CHARM-EU in the future



A multisite, multicultural and multilingual transdisciplinary university campus, a wider European experience for European and non-European students.



Bachelor, Masters and Doctorate programs with the added value of the five universities knowledge and know-how.



A flexible curriculum that allows the student to co-construct their pathway through a range of transdisciplinary challenge-driven modules with embedded mobility.



One award issued by the five universities.



Exchange of students within European Universities and other Educational areas in the world

Curriculum Design & Learning Strategies

AREA	TRADITIONAL	CHARM-EU
CAMPUS	Single Institution	Multiple Institutions
DISCIPLINE	Single Discipline or Interdisciplinary	Multidisciplinary or Transdisciplinary
CURRICULUM	Teacher Defined	Student Defined
MOBILITY	Add On	Embedded as the norm
CONTENT	Content Model	Challenge Model
ASSESSMENTS	Teacher Defined	Student Defined, Authentic
COLLABORATION	Solitary or with peers	Teams with peers, researchers, businesses, civil society, citizen



Mobility and Inclusivity

Key Concept: Mobility and inclusivity as the norm

- A wide and comprehensive range of mobility types and activities integrated across the programmes and the alliance.
 - Different lengths
 - One or several per module
 - Different modalities (face-to-face, online/virtual, blended)
 - Ensuring a multicultural classroom and environment
- A focus on affordability, social inclusion, and inclusivity for all (special needs, economical restrictions, refugees, racial and religious, etc.)



Governance and Management

Key Considerations and Challenges

- Identity and Structure: A new legal identity? A cooperative? An interinstitutional European Institute? Others?
- Staffing Policy: Assigning academic and non-academic staff, recruiting? salary alignment?
- Finance: Unique fees? Cash flows among Universities? Public funding for each institution or for CHARM-EU?
- Quality Assurance and Accreditation: A specific system for the European Universities? Recognition by industry, by postgraduate admissions? Each country's rules?



The US Collaborative Landscape

- Collaboratively designed joint or dual degrees have been on the landscape for a while, but not generally with domestic partners
- Degree programs are mostly at the Masters level or higher
- Co-tutelles and joint PhD supervision is also not uncommon
- Enrollment is overwhelmingly non-US based
 - 2014 ACE data shows 63% of students are non-US and only 4% are US only students
- US undergraduate degrees are typically more modular and more portable than in other parts of the world
- Student initiated transfers between institutions is much more common during the undergraduate degree
 - National data shows a transfer rate of 38% at least once in 6 years
 - Among the transfer population, 45% transfer more than once

Positives & Negatives of the US Transfer System

- Transfer students much more likely to bring socioeconomic diversity to college campuses in the US
- Transfer students have a positive impact on yield and revenue
 - 2/3 of transfer students will enroll, as opposed to 28% of first-time admits
- But...the transfer experience for students is not always positive
 - Community College transfers to 4-yr college degree completion rate is c. 14% on average
- Transfer students fall through the gaps
 - Who owns their experience?
 - Multiplicity of campus resources but not always designed for them
 - Transfer credit process is not always seamless
 - Social barriers to integration
- Colleges are beginning to pay attention!


Lessons learned for the EUN?


- Charm-EUN initiative walks the fine line between highly structured collaborative degrees and student initiated degree mobility.
- A single degree award with flexible & multi-modal mobility pathways.
- Collaborative degree design should solve for credit transfer and time to completion issues.
- Partner universities should proactively ensure mechanisms to support and orient various types of student initiated mobility.
- Can they solve for funding issues or incentivize participation from poorer European countries – disparities between national governments?

EUN impact on the US

- New models of partnership – European universities within networks could become more attractive to international partners
- Greater competitiveness for student recruitment
 - Multi-campus-country experience could become an attractive feature, compared to the singular experience offered by US higher education
 - Possibly hasten the pace of English language taught curricula to accommodate students from different linguistic backgrounds
- Networks may reprioritize intra-EU research collaborations at the expense of US partners

Main challenges of CHARM-EU

 Overcome legal barriers

 Management of each university expectations and alignment with CHARM-EU objectives


 Get the needed team (enough, diverse, senior and on-time)

 Multilingualism

 Engagement the university community

 Attraction of student European and non-European

 Attraction of aligned research and innovation

 Articulation of companies and civil society environment of each university

 Work Agile

Your Opinion!

The EUN is nothing new?

- Old wine in new bottles
- A true game changer
- Some new aspects



Discussion questions (1)

1. While EUN as networks by themselves might not have that big an impact in the world, the educational renewal being driven by them could very be a driver. Which parts of these initiatives are you already working on/with and will this help/hinder your Institutional Strategy ?
2. (How) will these initiatives help/hinder your institution with the comprehensive internationalization on your campus?

Discussion questions

3. At least several of the EUN's mentioned being open to expanding their network to also include Non-EU institutions in the future, would this be interesting? a burden, a challenge, a threat or a chance?
4. Speculative; will this initiative have it's follow up in other regions across the globe? If yes, where and how fast?

the EUN is nothing new?

- 5. What are the lessons you have learned in the USA in regards to the problems that these programs will face?

