

Many thanks to Seven-Minute  
Motivator Series Sponsor:

**UMSL** | Global  
University of Missouri–St. Louis





Association of International  
Education Administrators

## 2020 ANNUAL CONFERENCE

*Rethinking Comprehensive  
Internationalization for a  
Global Generation*

# Global Partnerships: Opportunities and Challenges in Resource Limited Settings

Sukant Misra, Ph.D., Texas Tech University, Chair

William Brustein, Ph.D., West Virginia University

Mylo Schaaf, MD, MPH, University of California, San  
Francisco

Wondwossen Gebreyes, DVM, Ph.D., Ohio State  
University

# Engaging the World: Bricks and Mortar vs. Global Portals

**William I. Brustein, Ph.D.**

Vice President for Global Strategies and International Affairs  
Eberly Family Distinguished Professor of History

# Portal Features:

- Locations based on significant connections
- Low cost and flexible
- Multi-purpose embassies facilitating teaching and learning, research and discovery and outreach engagement







# Global Portals

## Academic

- Faculty Teaching and Research
- Institutional Partnerships
- Dual Degrees
- Education Abroad
- Internships
- Educational Intelligence
- Capacity Building

## Alumni Engagement

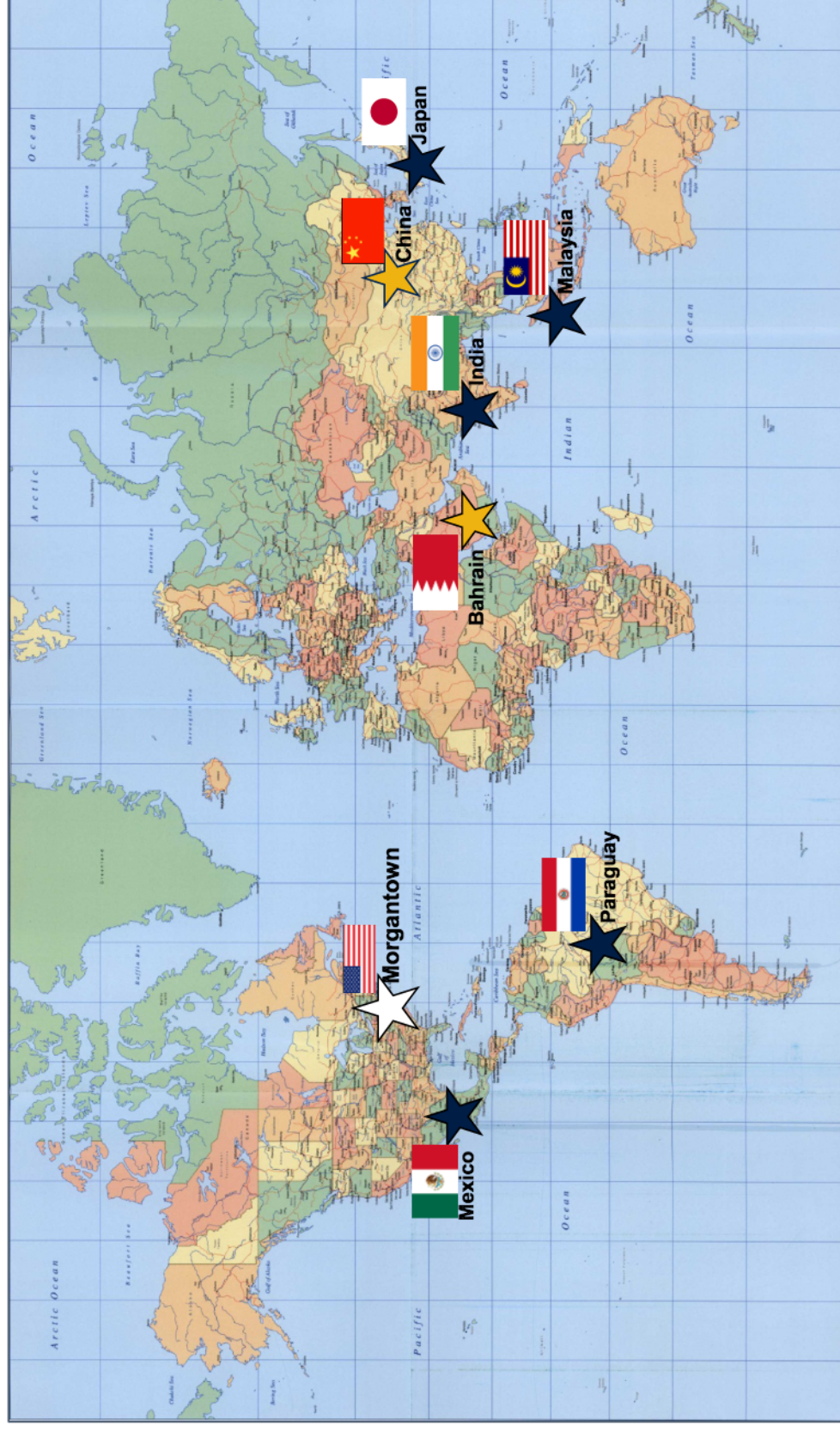
- Reconnecting Alumni to West Virginia University
- Continuing Education
- Alumni Club Formation
- Development
- Connections to Education, Business and Government

## Corporate Partnerships

- Assisting Companies with WV ties:
- Career Services
  - Workforce Development
  - Research and Consulting



# Portal Locations:



★ Current Portals

★ Future Portals

**UCSF**

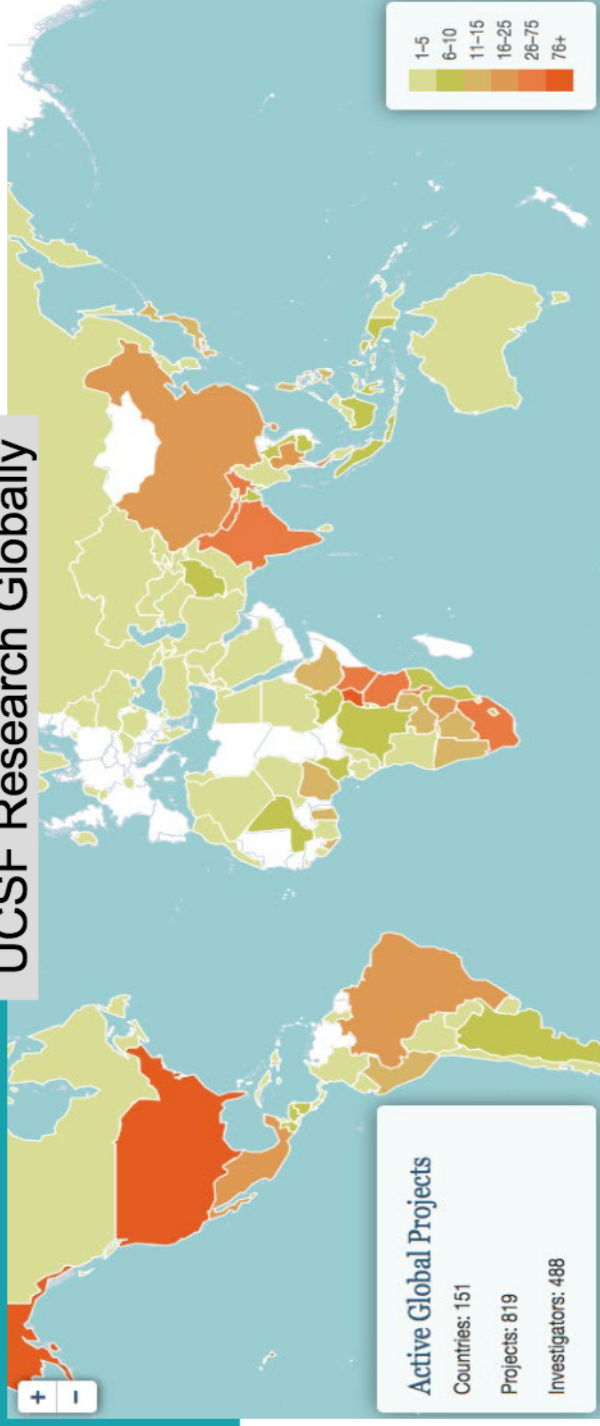
University of California  
San Francisco

# Global Programs for Research and Training

Affiliate of the University of California  
San Francisco

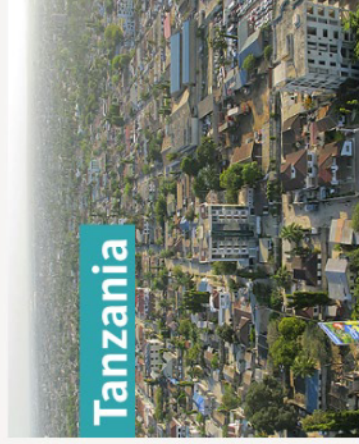
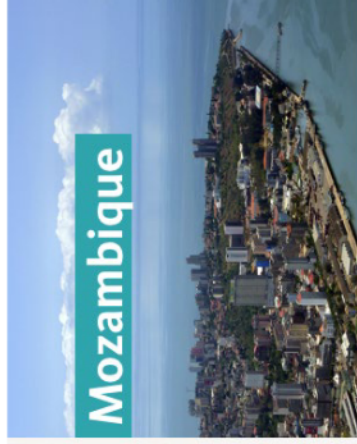
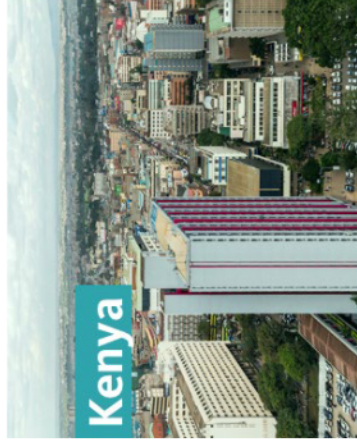
Mylo Schaaf MD MPH

UCSF Research Globally





# Global Programs for Research and Training

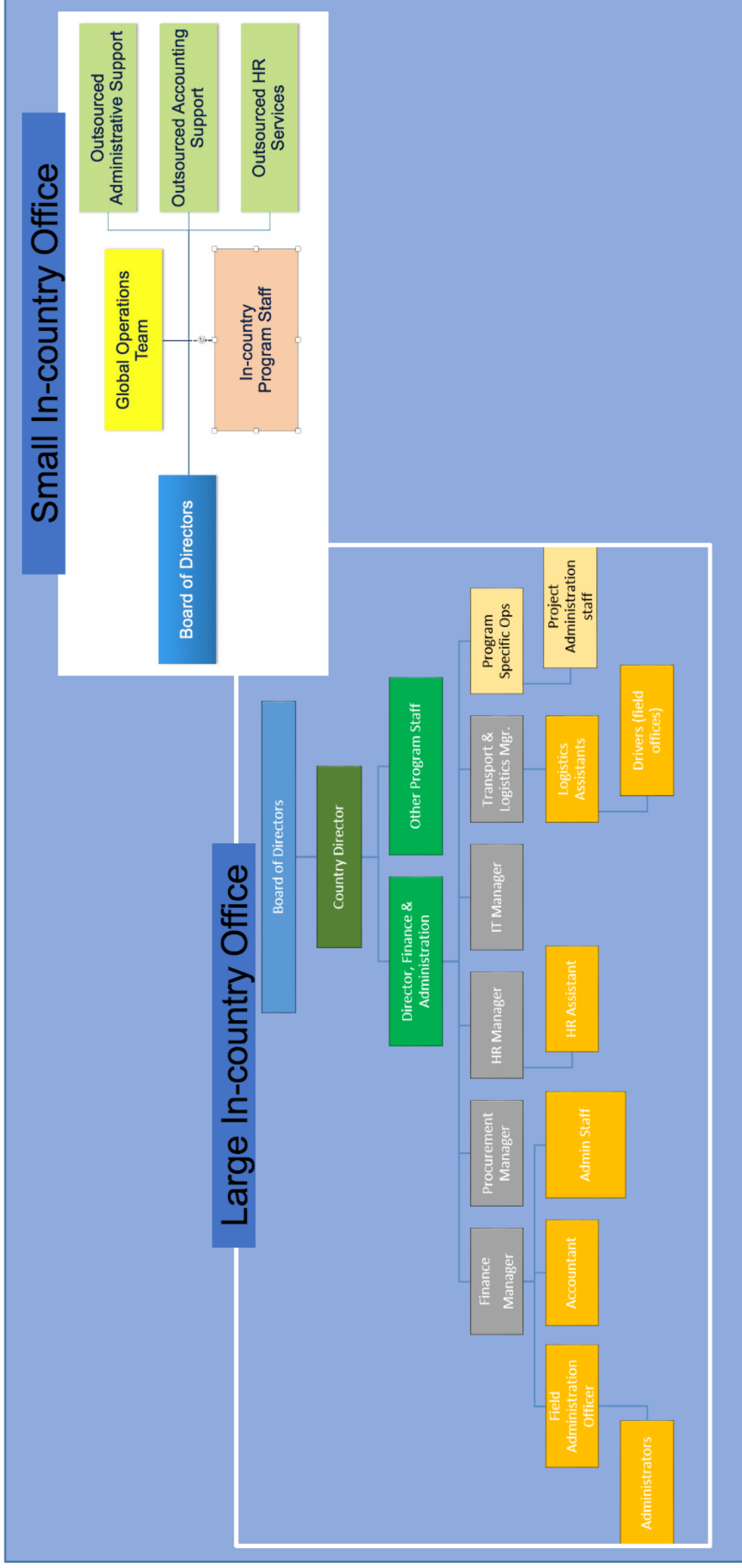


Pending expansion:  
South Africa  
Laos

- Owned & controlled by UCSF
- Registered in each country as NGO
- Oversight by Board comprised of UCSF faculty and staff and local nationals
- Launched in Tanzania in 2012
- All Africa PEPFAR-eligible countries approved by UCOP for registration
- 5 African countries active
- Provides administration & logistical support for execution of UCSF research and training projects, including:
  - Hiring local staff
  - Leasing space
  - Vendor contracting
  - Accessing banks
  - Complying with tax and local laws



# In-Country Office Organization and Responsibilities



# GP Support and Challenges

## GP Support

### Manages risk

### Ensures compliance (UCSF, sponsor, local, legal)

- Supports local banking and foreign currency exchange
- Facilitates visas and work permits
- Monitors export controls
- Facilitates local IRB issues
- Addresses cultural issues, language barriers, and expat issues
- Supports health and safety
- Manages local partner relationships
- Facilitates dialogue with NGO boards
- Manages:
  - Insurance
  - Property leases
  - Capital equipment
  - Local procurement and contracts
  - Foreign taxes
  - Security needs
  - Data security
  - NGO Boards

## GP Challenges

### Costs

- Shared costs across projects
- Building admin costs into new grants
- Campus management costs

### Grant fluctuation and stability

- Driven by sponsor funding priorities

### Site management

- Job security and staff retention
- Interpretation of local employment law
- Continuity with local partners
- Changing need for capital assets
- Navigating initial office setup



A photograph of a paved path in a park. The path is made of light-colored bricks and runs through a lush green area with large, mature trees. A person is walking on the path, and a bench is visible in the background. The scene is bright and sunny, with shadows cast on the path.

# GLOBAL ONE HEALTH INITIATIVE (GOHI)



# GOHi vision/strategy

---

1. Training Capacity
2. Research & Implementation Science Capacity
3. Outreach & Extension Capacity
4. Resource Stewardship
5. Financial Sustainability



THE OHIO STATE  
UNIVERSITY



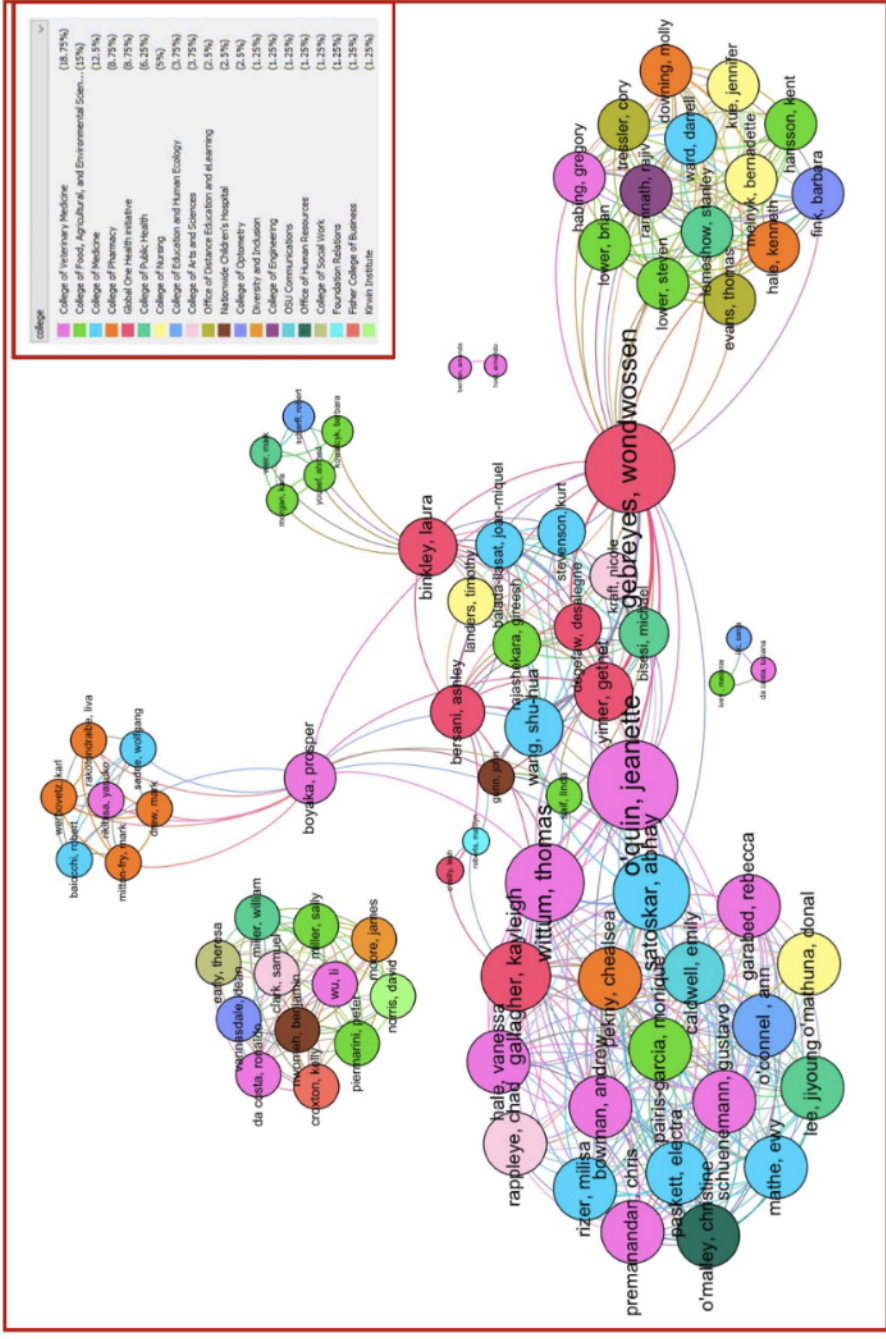


# Multi-disciplinary team from 20 OSU units



THE OHIO STATE  
UNIVERSITY

- 7 Health Science colleges
- Food, Agriculture and Environment
- Business
- Engineering
- Social Sciences
- Education & Human Ecology
- ODEE, ODI, O&E etc.



# Ohio State Global One Health, LLC



- Affiliated entity/ Implementation center
- Non-governmental Organization (NGO)/ Non-profit
- Licensed in Ohio and Ethiopia/ support in Eastern Africa/ SSA
- Multi-disciplinary team
- Allows launch, high impact, mutually-beneficial activities;
- Opens door for expanded funding sources



# Challenges and potential solutions

- Cultural differences/  
expectations vary
  - Risk and compliance
  - Managing potential liabilities
  - Controlling finances
    - Allowable/ allocability of costs
  - Human resource challenges
  - Financial sustainability
- Building relationship, recognize cultural differences
  - Robust Internal Control Structure (ICS)/ SOP
  - Funding flow only through parent organization (Ohio State)
  - Continuous joint staff training
  - Diversify funding sources



# Current models and Issues for academia

---



- **Direct collaboration**
  - MoU/ SEA etc
- **Global Portals- WVU**
- **Global Gateways**
- **Global Implementation**
- **Affiliated entities**
  - UCSF GP
  - OSU GOHi
- **Global campuses**
- **Academia is the only sector that is aligned with all 17 UN SDGs**
- **How do we build capacity of our current students?**
- **What is the best model(s) of global partnership in LMIC?**
- **How can we make mutually-beneficial sustained impact?**