



Leaders in International Higher Education

## 2021 ANNUAL CONFERENCE

*Leading Internationalization in  
a New Era: Collaborating for  
Global Solutions*

# Advancing Internationalization at HBCUs: Issues and Opportunities

Session Chair: Krishna Bista, Morgan State University

- Dafina Diabate, Lincoln University
- Uttam Gaulee, Morgan State University
- Jewell Winn, Tennessee State University



**HAPPENING TODAY**

**CLASSES RESUME AT LINCOLN UNIVERSITY**

[www.aieaworld.org](http://www.aieaworld.org) | [info@aieaworld.org](mailto:info@aieaworld.org) | [#AIEA2021](https://twitter.com/AIEA2021)



Leaders in International Higher Education

## 2021 ANNUAL CONFERENCE

*Leading Internationalization in  
a New Era: Collaborating for  
Global Solutions*

# Reality, Response, and Resilience Internationalization at Lincoln University

Dr. Dafina Blacksher Diabate  
Lincoln University, Pennsylvania  
ddiabate@lincoln.edu

# Reality, Response, and Resilience:

## Internationalization at Lincoln University (Pennsylvania)



- Lincoln University reality
- COVID response
- Resilience
  - Students
  - Faculty
  - Local community

# **Lincoln University Reality**

## **Campus context**

- Brief description of LU
- Liberal arts; HBCU; public
- Rural campus
- Student enrollment
- International students



# Lincoln University

## COVID Response



- Returned students from abroad
- Suspended study abroad



FACE MASK REQUIRED BEFORE ENTERING.



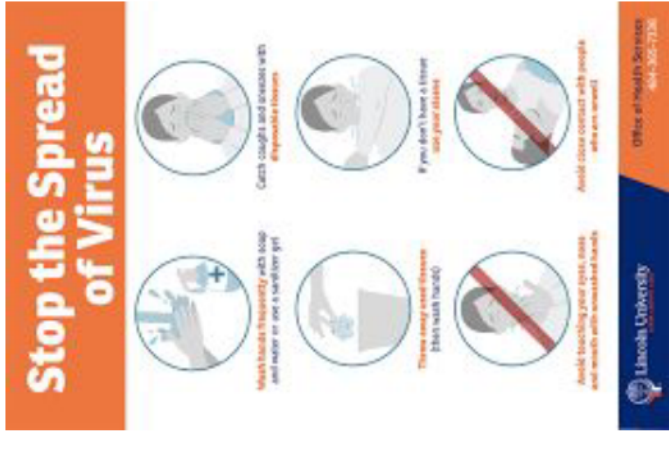
Your safety is our priority.

[lincolnu.edu/coronavirus](http://lincolnu.edu/coronavirus)

- Extended stay and support for international students
- Increased outreach in admissions process

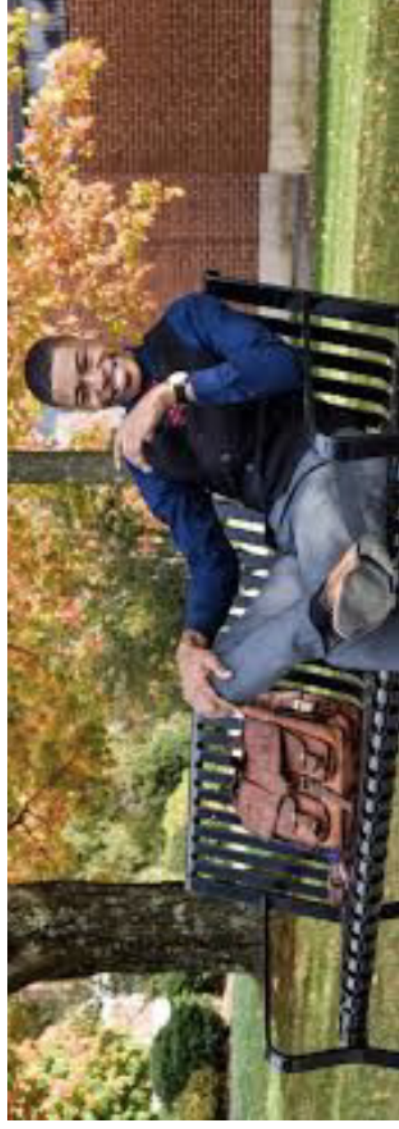
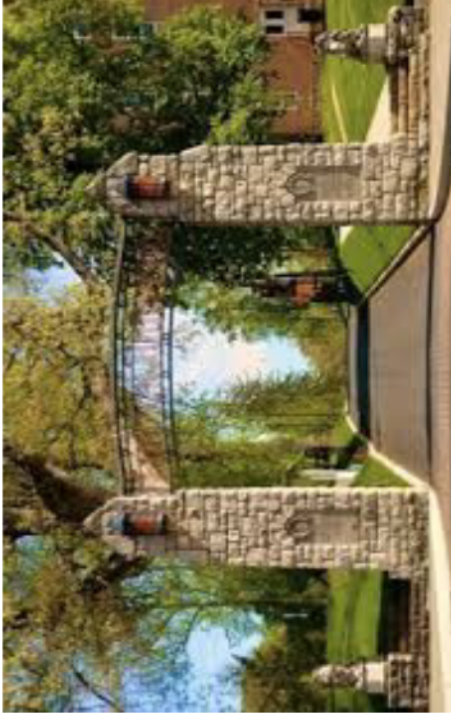
# Lincoln University COVID Reality

- Restricted campus access
- Regular testing; protocols
- Reduced campus density
- Shortened campus time (fall and spring)
- Remote learning



# Lincoln University Refocus

- Global skills graduates need
- Engage prospective international students
- Internationalization opportunities for faculty
- Connection with local community



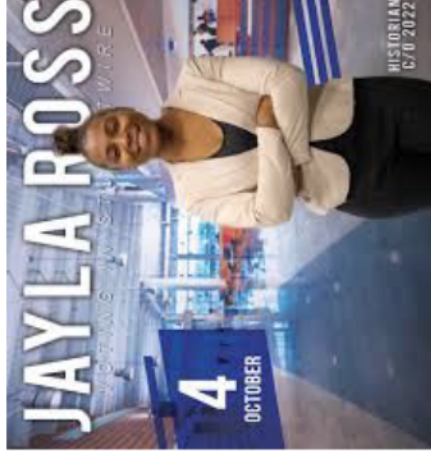


# Lincoln University

## Resilience

### CURRENT STUDENTS

- IDEAS Grant – Study Abroad Fellow
- Study Abroad Student Ambassadors
- Virtual internships

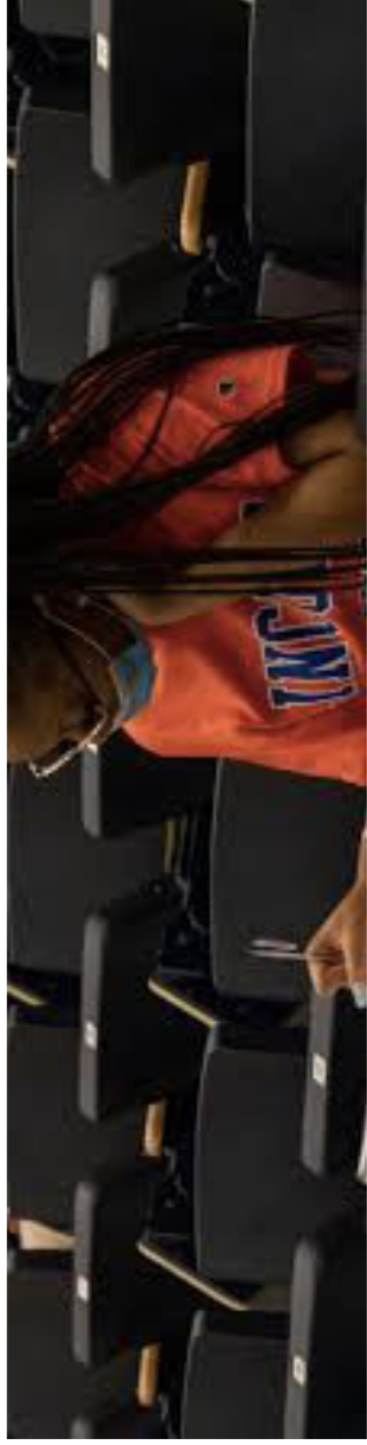


# Lincoln University

## Resilience

### PROSPECTIVE STUDENTS

- Remote learning despite embassies closed
- Virtual webinars
- Visa shenanigans



# Lincoln University Resilience

## FACULTY

- FLITE: Faculty-Led International Travel for Education
- Study Abroad Committee
- Fulbright



# Lincoln University Resilience

## COMMUNITY

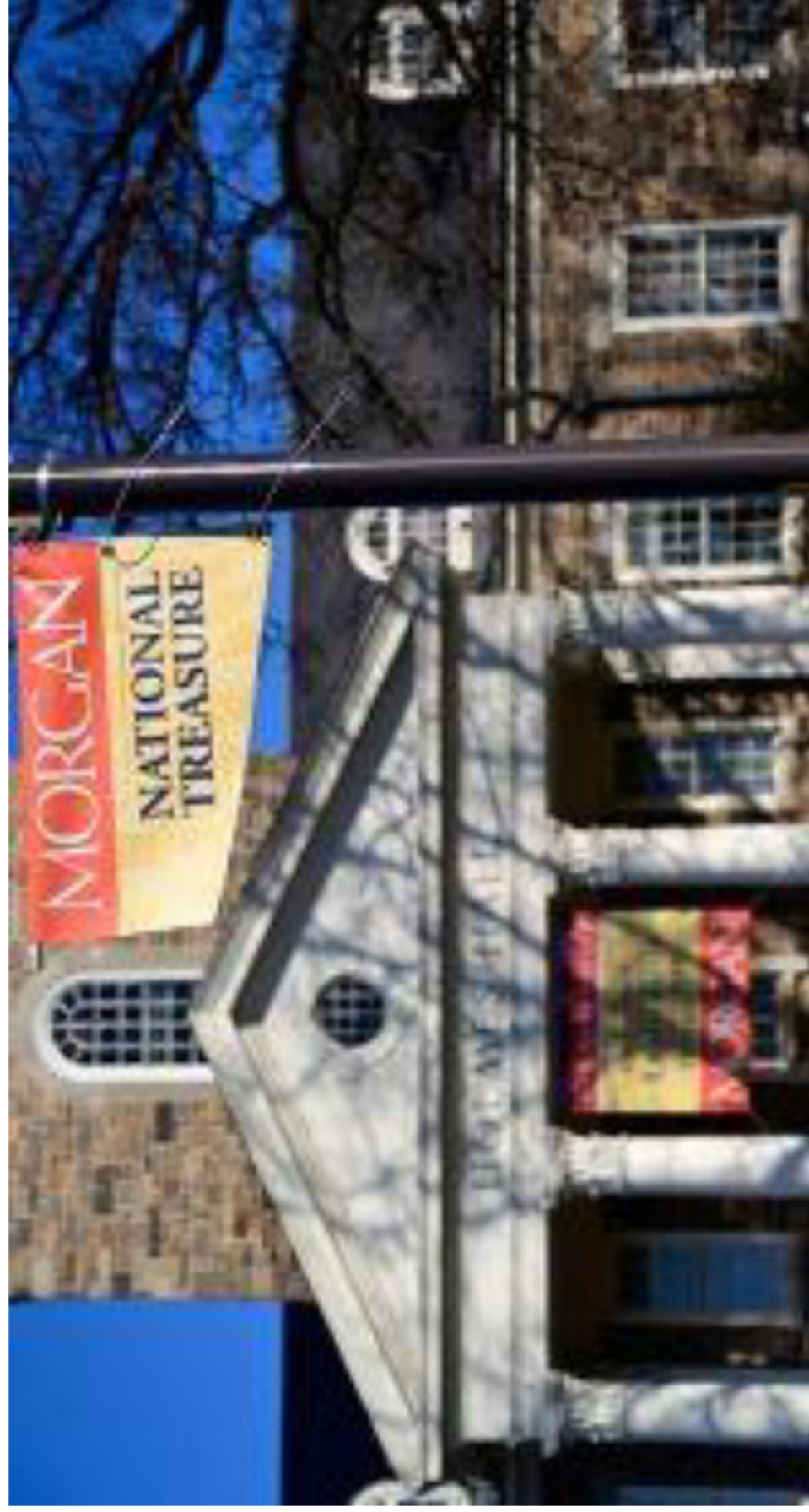
- International student support
- Host families
- Oratory contest



# **Reality, Response, and Resilience:** Internationalization at Lincoln University (Pennsylvania)



- Dr. Dafina Blacksher Diabate
- [ddiabate@lincoln.edu](mailto:ddiabate@lincoln.edu)



[www.aieaworld.org](http://www.aieaworld.org) | [info@aieaworld.org](mailto:info@aieaworld.org) | [#AIEA2021](https://twitter.com/AIEA2021)



Leaders in International Higher Education

## 2021 ANNUAL CONFERENCE

*Leading Internationalization in  
a New Era: Collaborating for  
Global Solutions*

# Global HBCCU Morgan Internationalization Initiatives and Priorities

Dr. Uttam Gaulee and Dr. Krishna Bista  
Morgan State University, Maryland  
[uttam.gaulee@morgan.edu](mailto:uttam.gaulee@morgan.edu)

# Morgan Current News

## Morgan's Spring 2021 Semester Reopening Plan

🕒 November 30, 2020



Planning for the Best of 2020 semester was transpired last spring

[Read More »](#)

## Morgan State University Students Study Abroad in Guatemala

🕒 February 13, 2020

## Morgan State University Receives Historic Gift of \$40M from Philanthropist MacKenzie Scott

🕒 December 15, 2020

## Morgan State University President Receives Authorization to Pursue Affiliate Agreement to Add New College of Osteopathic Medicine

🕒 January 9, 2020

## Morgan State University to Offer Three Degree Programs in Ghana Following Board Approval

🕒 February 10, 2020



# Morgan Global Highlights

- 10-Year Strategies Plan (2021-2031)
- Internationalization Task Force
- International Students and Scholars
- Fulbright and Study Abroad Programs
- Morgan Virtual Exchange
- Global Engagements
- Joint Research Projects
- Virtual Symposiums



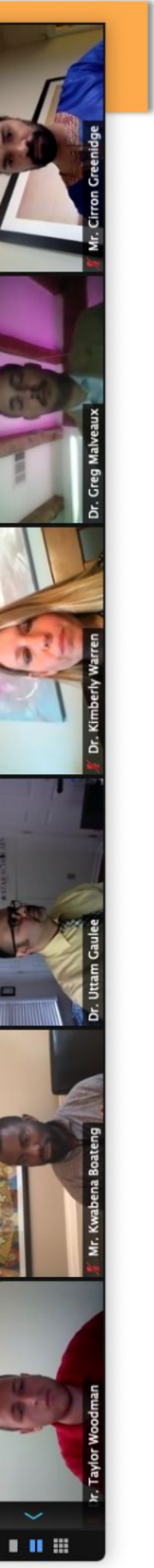
# Morgan 10-Year Strategic Plan

- Campus Internationalization
- Internationalization of Education Task Force
- Bears Beyond Border
- Expansion of Programs
- Scholarship and Awards



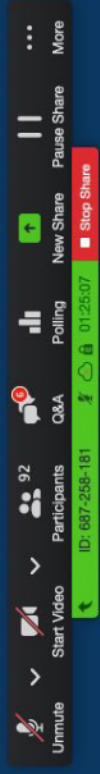
# **Virtual Exchange and Symposiums**

- **Collaborative Online Intl Learning (COIL) with Kansai University/American Council on Education**
- **Two-Day Campus Internationalization Global Symposium (675 attendees; 5 HBCUs)**
- **Soliya Connect Global Programs- Virtual Exchange for Four Courses**
- **VE Spain: Universidad de Castilla-La Mancha**



*How do international faculty and international students help in the process of internationalization at home? (and How with COVID-19?)*

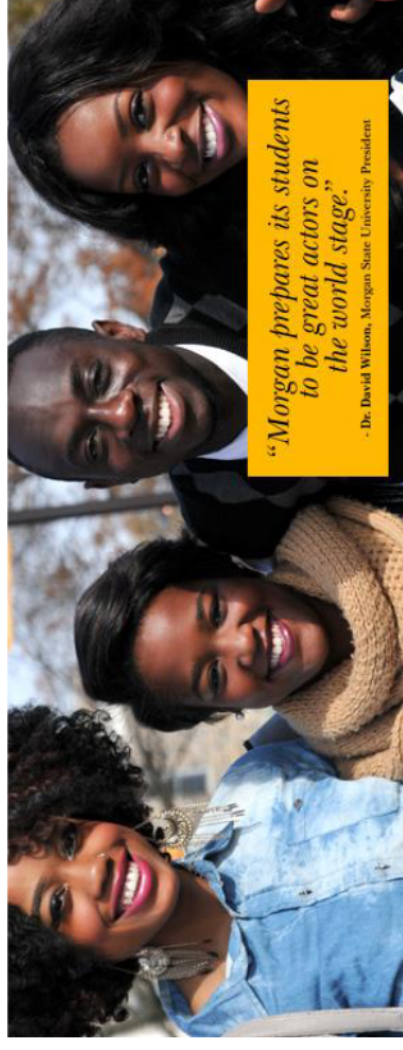
## Panel Discussion



# Bears Beyond Border

Why HBCUs Should Lead the Internationalization of Higher Education?

- Internationalization of Education Task Force
- Bears Beyond Border
- Scholarship and Awards



*“Morgan prepares its students to be great actors on the world stage.”*

- Dr. David Wilton, Morgan State University President

Morgan State University Tops Fulbright Program's 'HBCU Institutional Leaders'

🕒 January 13, 2020

# First HBCU Branch Campus

- Branch campus in Accra, Ghana in collaboration with African University College of Communications (Fall 2021 start date)
- Programs includes Journalism, Business Administration

**President David Wilson Honored with Transcendent Order of the African Eagle Award**

© December 9, 2019

# International Student Enrollment

(As of Fall 2019)



**7.0%**

**Grand Total = 540**

## Top Countries of Origin

Country	No. of Students
Saudi Arabia .....	167
Kuwait .....	126
Nigeria.....	99
Nepal .....	11
Iran.....	10
Jamaica.....	10
Bangladesh.....	8
India.....	8
Cameroon.....	7
Kenya .....	7
Bahamas .....	6
Trinidad and Tobago.....	6

# Global Representation

## MSU's National Rankings\*



**Fulbright Scholars** — 1st among all HBCUs

Fulbright-related grants to Morgan students:

**149 for study in 44 countries**

Fulbright-related grants to Morgan professors or administrators: **75 for study in 41 countries**







# Internationalization at Tennessee State University

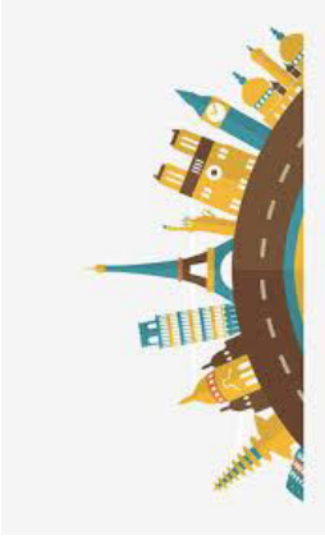
- Founded in 1912, it is the largest and only state-funded historically black university in Tennessee. It is a member-school of the Thurgood Marshall College Fund. Tennessee State University is a comprehensive urban institution offering 38 bachelor's degrees, 24 master's degrees, and seven doctoral degrees.
- Office of International Affairs, formerly Office of Diversity and International Affairs, est. 2012
- 2012 - 69 International students; 34 studying abroad; 4 total staff
- 2016 - 851 international students; 120 studying abroad; 8 total staff
- 2021 - 250 international students; 180 studying abroad virtually; 12 total staff

# Comprehensive Internationalization

ACE Model for Comprehensive Internationalization



# High Impact Practices



Integrative research experiences/study abroad

Living/learning communities

Service-learning projects

# Mitigating Barriers to Student Participation

- Study abroad workshops
- Passport Acceptance Facility
- Heritage Program
- Ancestry Testing
- Listening/Sharing Campus Tour
- Faculty/Staff training



# Cultural Appreciation Week

Tennessee State University  
Office of International Affairs  
Presents

## 18th Annual Spring Cultural Celebration Week

**Open House**  
Monday, March 26, 2018—11:00 am to 1:00 pm  
Campus Center

**Quiz Bowl**  
Tuesday, March 27, 2018—4:00 pm to 5:30 pm  
Jane Elliott Hall Auditorium

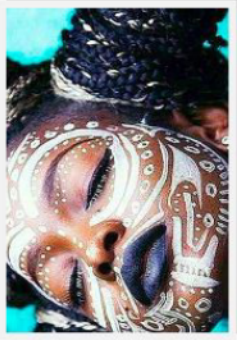
**Food Festival**  
Wednesday, March 28, 2018—11:00 am to 1:00 pm  
Jane Elliott Hall Auditorium Hall

**Cultural Appreciation**  
Thursday, March 29, 2018—10:00 am to 1:00 pm  
Jane Elliott Hall Auditorium

Cultural outfits are encouraged.



Enjoy Tastes, Sights, and Sounds From Around the World



Tennessee State University is an AA/EEO employer.



- Held each Spring in March or April
- Largest cultural program on campus each year
- The week consists of an international education open house, food festival and cultural celebration
- We collaborate the city's public school system each year
- We host approximately 150 middle school students.

# Ms. Collegiate International Scholarship Pageant



# Graduation Reception

- Receptions are held twice a year in prior to May and December Commencement
- Graduates, their families and friends are invited
- Reception consists of a short program, presentation of sashes and refreshments.
- Between 75 & 100 international students graduate at each commencement





# WHY TSU INTENSIVE ENGLISH CENTER?

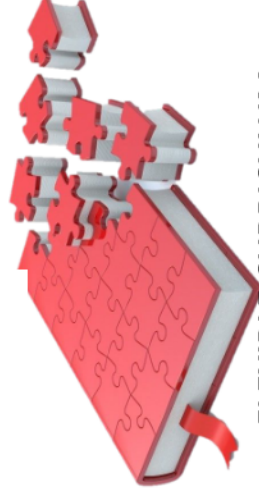


*First HBCU to have an accredited ESL Program*

Accredited by



**EXTRA-CURRICULAR ACTIVITIES**



**FLEXIBLE CURRICULUM**

[www.aieaworld.org](http://www.aieaworld.org) | [info@aieaworld.org](mailto:info@aieaworld.org) | [#AIEA2021](https://twitter.com/AIEA2021)

# Other Initiatives

- Global Faculty Fellows
- QEP submission - Beyond Borders: Developing Global Leaders and Cultural Competency
- Faculty recruitment initiative
- Pathways to Prosperity
- IEC Pathways program

# For Questions

Dr. Dafina Diabate, [ddiabate@lincoln.edu](mailto:ddiabate@lincoln.edu)

Dr. Jewell Winn, [jwinn@tnstate.edu](mailto:jwinn@tnstate.edu)

Dr. Krishna Bista, [krishna.bista@morgan.edu](mailto:krishna.bista@morgan.edu)

Dr. Uttam Gaulee, [uttam.gaulee@morgan.edu](mailto:uttam.gaulee@morgan.edu)